

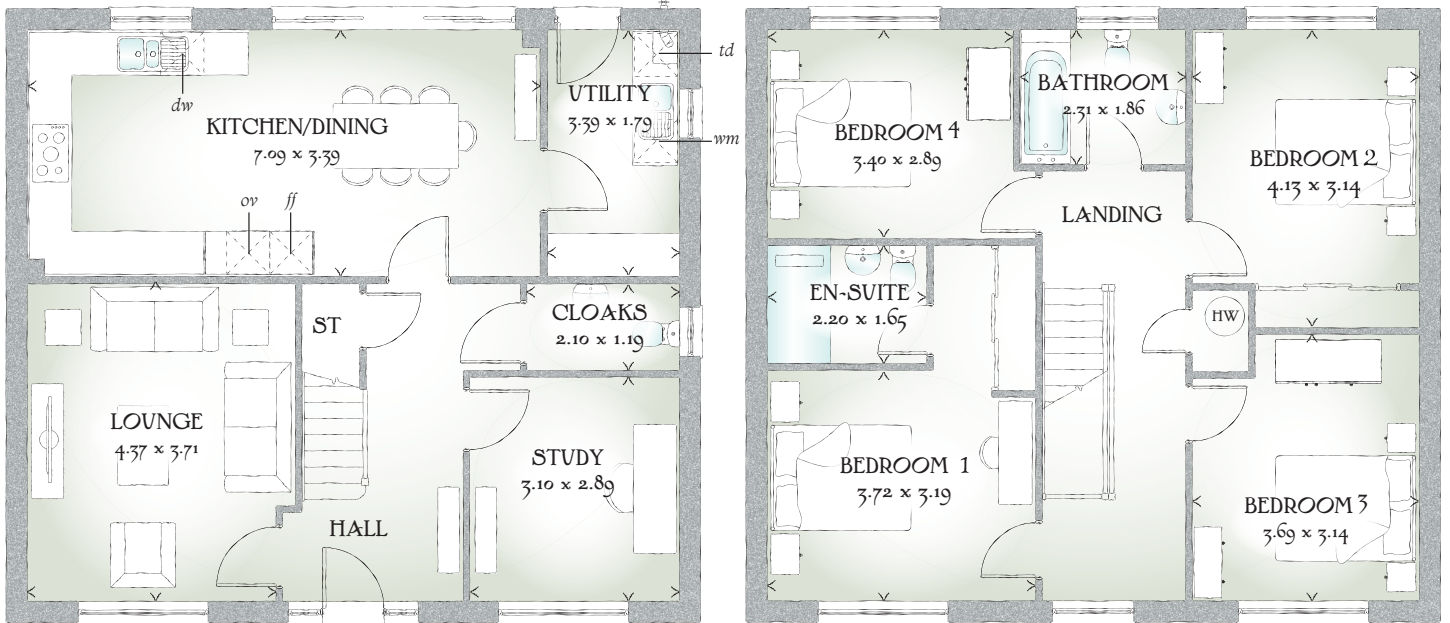


Harrogate

FOUR BEDROOM HOME



 REDROW



FOUR BEDROOM HOME

The unique design of the doorway tells you just how much effort has gone into the creation of The Harrogate by craftsmen who care. It's touches like these that make your house into a home, transforming the ordinary into the extraordinary.

GROUND FLOOR

Lounge	14'4" x 12'2"	4.37 x 3.71 m
Kitchen/ Dining	23'3" x 11'1"	7.09 x 3.39 m
Study	10'2" x 9'6"	3.10 x 2.89 m
Cloaks	6'11" x 3'11"	2.10 x 1.19 m
Utility	11'1" x 5'10"	3.39 x 1.79 m


FIRST FLOOR

Bedroom 1	12'2" x 10'6"	3.72 x 3.19 m
En-suite	7'3" x 5'5"	2.20 x 1.65 m
Bedroom 2	13'7" x 10'4"	4.13 x 3.14 m
Bedroom 3	12'1" x 10'4"	3.69 x 3.14 m
Bedroom 4	11'2" x 9'6"	3.40 x 2.89 m
Bathroom	7'7" x 6'1"	2.31 x 1.86 m

CONSUMER CODE FOR HOME BUILDERS

www.consumercode.co.uk

Customers should note this illustration is an example of The Cambridge house type. All dimensions indicated are approximate and the furniture layout is for illustrative purposes only. Homes may be 'handed' (mirror image) versions of the illustrations, and may be detached, semi-detached or terraced. Materials used may differ from plot to plot including render and roof tile colours. Detailed plans and specifications are available for inspection for each plot at our Sales Centre during working hours and customers must check their individual specifications prior to making a reservation.

KEY  Hob *ov* Oven *ff* Fridge/freezer *wm* Washing machine space *dw* Dishwasher space *td* Tumble dryer space *hw* Hot water cylinder *ST* Cupboard

< Denotes where dimensions are taken from. All wardrobes are subject to site specification. Please see Sales Consultant for further details.

Traditional homes, built the way you remember

 **REDROW**
A BETTER WAY TO LIVE