



THE
JUNIPERS

Chigwell

FOUR BEDROOM HOME

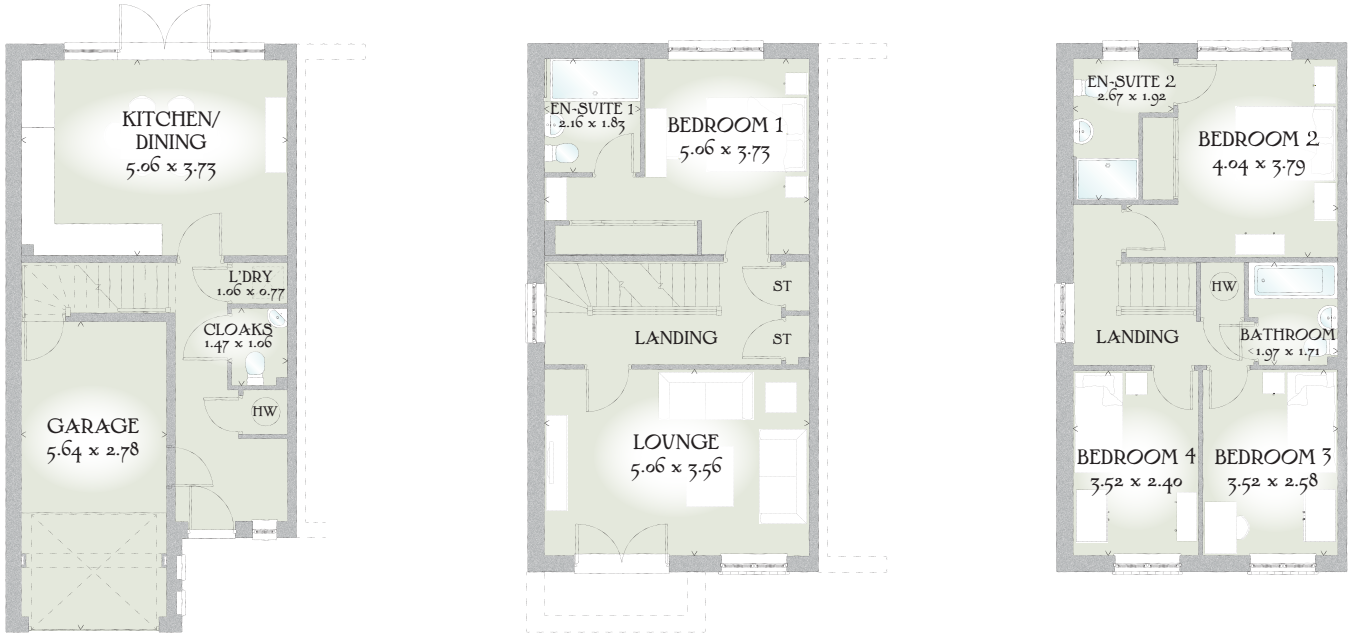


 REDROW



THE
JUNIPERS

Chigwell



The Chigwell boasts four spacious bedrooms, with two enjoying their own en-suite bathroom. An integrated kitchen/diner and first floor lounge ensures you have all the space necessary for a growing family.

FOUR BEDROOM HOME

Plots 191, 193, 195, 197, 199, 201 & 203 are handed

GROUND FLOOR

Kitchen/ Dining	16'7" x 12'3"	5.06 x 3.73 m
Cloaks	4'10" x 2'6"	1.47 x 1.06 m
Utility	18'6" x 9'1"	5.64 x 2.78 m
Laundry	3'6" x 2'6"	1.06 x 0.77 m

FIRST FLOOR

Lounge	16'7" x 11'8"	5.06 x 3.56 m
Bedroom 1	16'7" x 12'3"	5.06 x 3.73 m
En-suite 1	7'1" x 6'0"	2.16 x 1.83 m

SECOND FLOOR

Bedroom 2	13'3" x 12'5"	4.04 x 3.79 m
En-suite 2	8'9" x 6'4"	2.67 x 1.92 m
Bedroom 3	11'0" x 8'6"	3.52 x 2.58 m
Bedroom 4	11'7" x 7'10"	3.52 x 2.40 m
Bathroom	6'6" x 5'7"	1.97 x 1.71 m

CONSUMER CODE FOR HOME BUILDERS

www.consumercode.co.uk

Customers should note this illustration is an example of the Chigwell house type. All dimensions indicated are approximate and furniture layout is for illustrative purposes only. Homes may be 'handed' (mirror image) versions of the illustrations, and may be detached, semi-detached or terraced. Materials used may differ from plot to plot including render and roof tile colours. Detailed plans and specifications are available for inspection for each plot at our Sales Centre during working hours and customers must check their individual specifications prior to making a reservation.

KEY Hot water cylinder ST Cupboard

< Denotes where dimensions are taken from. All wardrobes are subject to site specification. Please see Sales Consultant for further details.

Traditional homes, built the way you remember

REDROW
A BETTER WAY TO LIVE