



THE  
JUNIPERS

# Buckhurst

FOUR BEDROOM HOME

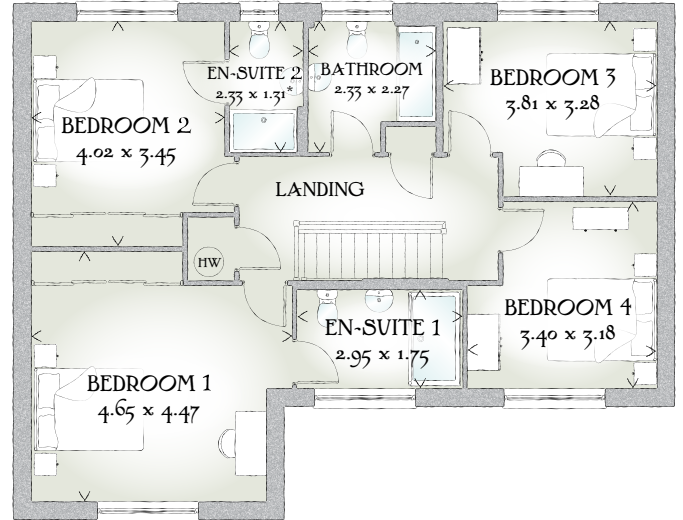
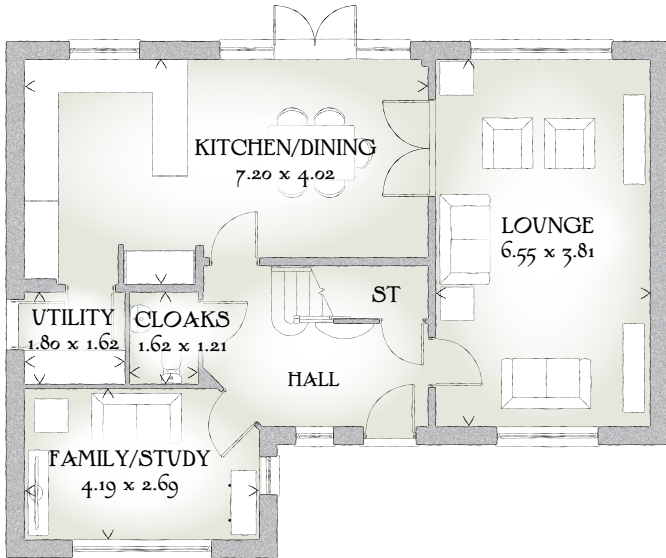


 REDROW



THE  
JUNIPERS

# Buckhurst



FOUR BEDROOM HOME

\*Plot 211 is handed

The Buckhurst is an exquisite four bedroom home offering everything you'll need for day-to-day life. This property benefits from a ground floor family room/study, along with en-suite bathrooms to bedrooms one and two upstairs.

## GROUND FLOOR

Lounge	21'6" x 12'6"	6.55 x 3.81 m
Kitchen/ Dining	23'7" x 13'2"	7.20 x 4.02 m
Family/Study	13'9" x 8'10"	4.19 x 2.69 m
Cloaks	5'4" x 4'0"	1.62 x 1.21 m
Utility	5'11" x 5'4"	1.80 x 1.62 m

## FIRST FLOOR

Bedroom 1	15'3" x 14'8"	4.65 x 4.47 m
En-suite 1	9'8" x 5'9"	2.95 x 1.75 m
Bedroom 2	13'2" x 11'4"	4.02 x 3.45 m
En-suite 2	7'8" x 4'4"	2.33 x 1.31 m
Bedroom 3	12'6" x 10'9"	3.81 x 3.28 m
Bedroom 4	11'2" x 10'5"	3.40 x 3.18 m
Bathroom	7'8" x 7'5"	2.33 x 2.27 m

**CONSUMER  
CODE FOR  
HOME BUILDERS**

[www.consumercode.co.uk](http://www.consumercode.co.uk)

Customers should note this illustration is an example of the Buckhurst house type. All dimensions indicated are approximate and furniture layout is for illustrative purposes only. Homes may be 'handed' (mirror image) versions of the illustrations, and may be detached, semi-detached or terraced. Materials used may differ from plot to plot including render and roof tile colours. Detailed plans and specifications are available for inspection for each plot at our Sales Centre during working hours and customers must check their individual specifications prior to making a reservation.

**KEY** Hot water cylinder ST Cupboard  
< Denotes where dimensions are taken from. All wardrobes are subject to site specification. Please see Sales Consultant for further details.

Traditional homes, built the way you remember

