



THE
JUNIPERS

Elmstead

FOUR BEDROOM HOME

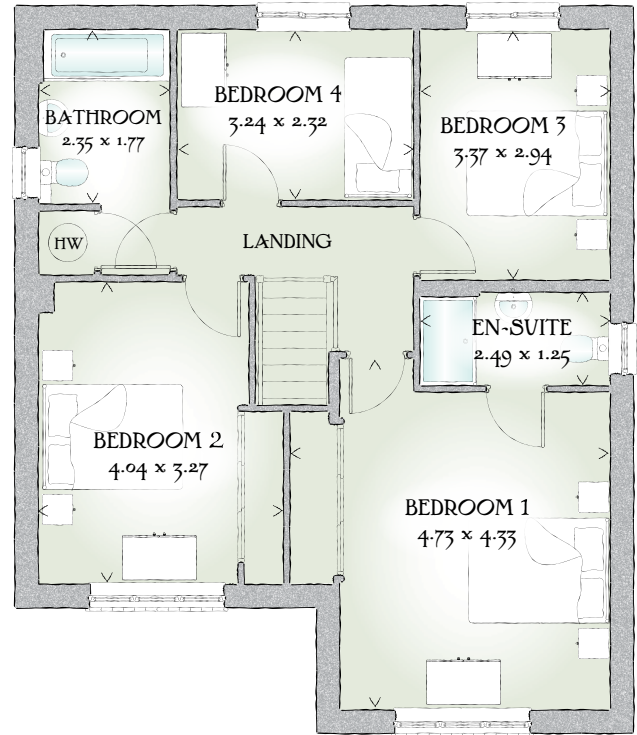
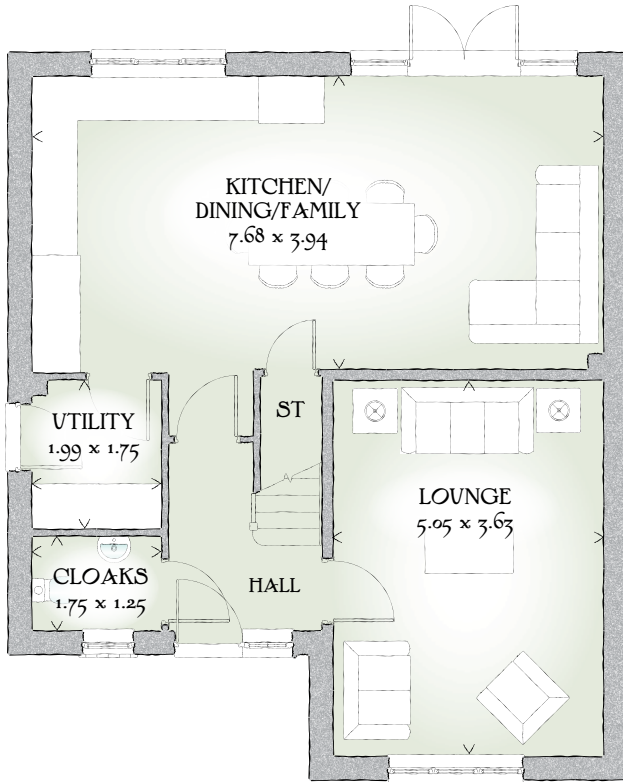


 REDROW



THE
JUNIPERS

Elmstead



FOUR BEDROOM HOME

*Plot 217 is handed

Open plan living has been created to its best effect in this superb four bedroom house. The kitchen/dining/family room is ideal for all of family life, from busy breakfasts to lively dinners to snuggling up together in front of a film.

GROUND FLOOR

Kitchen/ Dining/ Family	25'2" x 12'11"	7.68 x 3.94 m
Lounge	16'7" x 11'11"	5.05 x 3.63 m
Utility	6'6" x 5'9"	1.99 x 1.75 m
Cloaks	5'9" x 4'1"	1.75 x 1.25 m

FIRST FLOOR

Bedroom 1	15'6" x 14'2"	4.73 x 4.33 m
En-suite 1	8'2" x 4'1"	2.49 x 1.25 m
Bedroom 2	13'3" x 10'9"	4.04 x 3.27 m
Bedroom 3	11'5" x 9'8"	3.37 x 2.94 m
Bedroom 4	10'8" x 7'7"	3.24 x 2.32 m
Bathroom	7'9" x 5'10"	2.35 x 1.77 m

**CONSUMER
CODE FOR
HOME BUILDERS**

www.consumercode.co.uk

Customers should note this illustration is an example of the Elmstead house type. All dimensions indicated are approximate and furniture layout is for illustrative purposes only. Homes may be 'handed' (mirror image) versions of the illustrations, and may be detached, semi-detached or terraced. Materials used may differ from plot to plot including render and roof tile colours. Detailed plans and specifications are available for inspection for each plot at our Sales Centre during working hours and customers must check their individual specifications prior to making a reservation.

KEY ST Cupboard

< Denotes where dimensions are taken from. All wardrobes are subject to site specification. Please see Sales Consultant for further details.

Traditional homes, built the way you remember

REDROW
A BETTER WAY TO LIVE