

# Pine

Three bedroom home



Where you  
want to be



**Harwood**  
Homes

# Pine

## Three bedroom home

The Pine is a wonderful 3 bedroom home benefiting from the modern touch. The open-plan kitchen/ dining area acts as the heart of the home, together with an en-suite master bedroom, spacious lounge and family bathroom.

### Ground floor


Lounge	15'5" x 10'6"	4.67 x 3.19 m
Kitchen/ Dining	17'7" x 10'2"	5.35 x 3.09 m
Cloaks	5'7" x 2'11"	1.71 x 0.90 m
Laundry	2'10 x 2'6"	0.87 x 0.77 m

### First floor

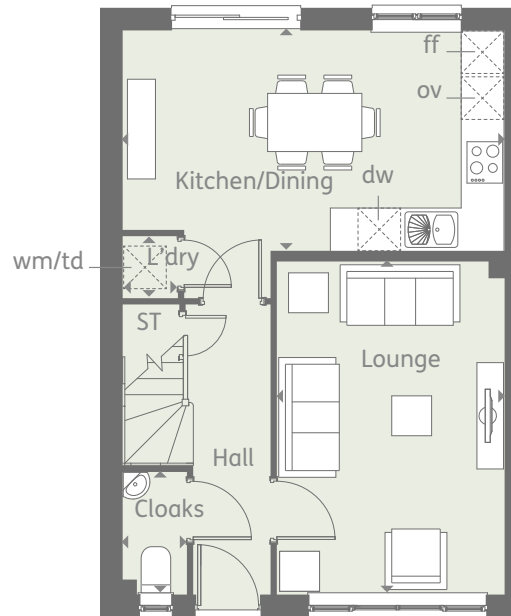
Bedroom 1	11'11" x 10'8"	3.62 x 3.26 m
En-suite	7'5" x 3'10"	2.25 x 1.18m
Bedroom 2	10'1" x 9'7"	3.07 x 2.92 m
Bedroom 3	10'3" x 7'2 "	3.12 x 2.19 m
Bathroom	8'5" x 6'7"	2.57 x 2.00 m

Customers should note this illustration is an example of the Pine house type. All dimensions indicated are approximate and the furniture layout is for illustrative purposes only. Homes may be 'handed' (mirror image) versions of the illustrations, and may be detached, semi-detached or terraced. Materials used may differ from plot to plot including render and roof tile colours. Detailed plans and specifications are available for inspection for each plot at our Sales Centre during working hours and customers must check their individual specifications prior to making a reservation.

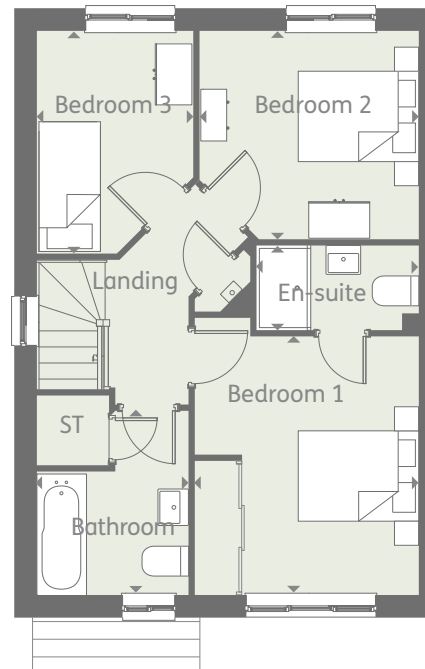
#### KEY

 Hob	wm	Washing machine space	
ov	Oven	td	Tumble dryer space
ff	Fridge/freezer	ST	Cupboard
dw	Dishwasher		

Ground floor



First floor



◀ Denotes where dimensions are taken from. All wardrobes are subject to site specification. Please see Sales Consultant for further details.

**CONSUMER  
CODE FOR  
HOME BUILDERS**

[www.consumercode.co.uk](http://www.consumercode.co.uk)

THINK 204325\_EF\_PINE\_DM.1 RV

Discover where you want to be and visit  
**harwoodhomes.co.uk**

  
**Harwood  
Homes**