

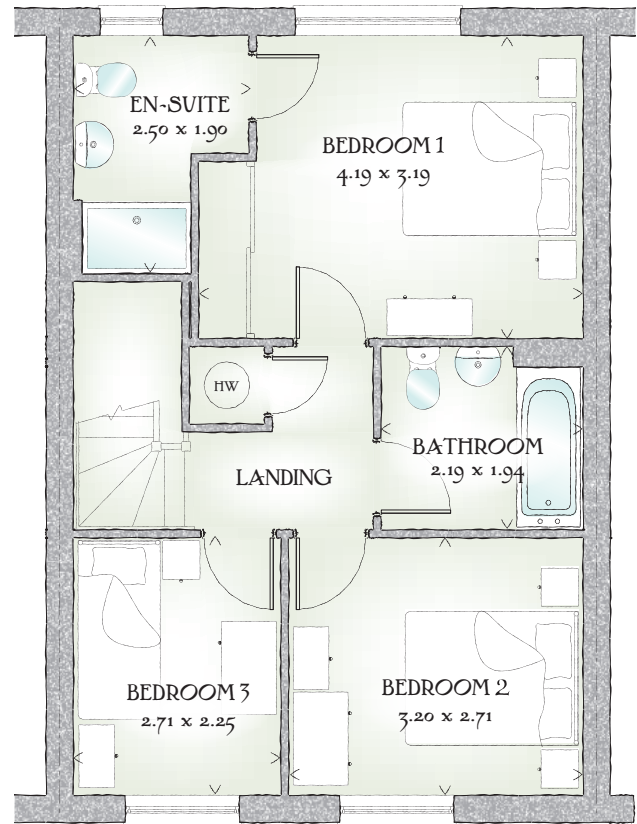
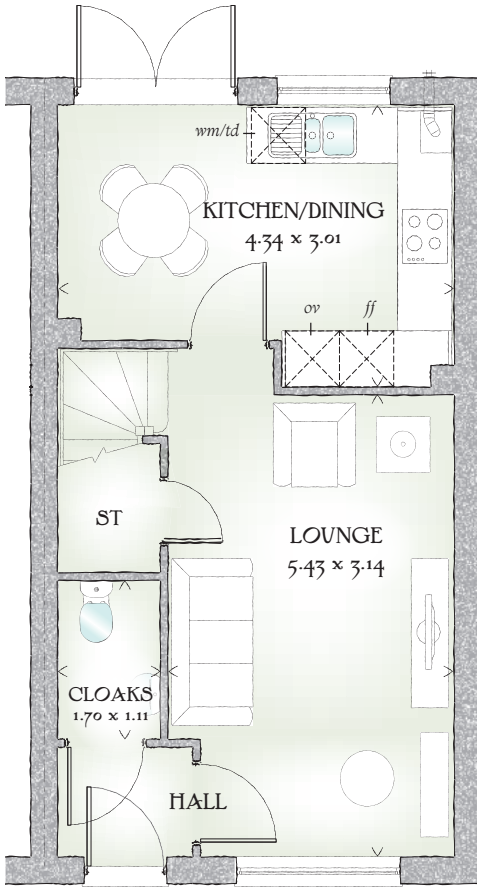


Ledbury³

THREE BEDROOM HOME



 REDROW



THREE BEDROOM HOME

Simple, yet stylish, compact yet also undeniably chic, these superb homes offer the perfect combination of quality and value, space and savings, all created with the same high levels of craftsmanship that set all Redrow homes apart.

GROUND FLOOR

Lounge	17'10" x 10'4"	5.43 x 3.14 m
Kitchen/ Dining	14'3" x 9'11"	4.34 x 3.01 m
Cloaks	5'7" x 3'8"	1.70 x 1.11 m

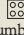
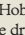
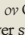
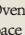
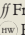
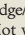
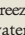
FIRST FLOOR

Bedroom 1	13'9" x 10'6"	4.19 x 3.19 m
En-suite	8'2" x 6'3"	2.50 x 1.90 m
Bedroom 2	10'6" x 8'11"	3.20 x 2.71 m
Bedroom 3	8'11" x 7'5"	2.71 x 2.25 m
Bathroom	7'2" x 6'4"	2.19 x 1.94 m

CONSUMER
CODE FOR
HOME BUILDERS

www.consumercode.co.uk

Customers should note this illustration is an example of the Ledbury³ house type. All dimensions indicated are approximate and furniture layout is for illustrative purposes only. Homes may be 'handed' (mirror image) versions of the illustrations, and may be detached, semi-detached or terraced. Materials used may differ from plot to plot including render and roof tile colours. Detailed plans and specifications are available for inspection for each plot at our Sales Centre during working hours and customers must check their individual specifications prior to making a reservation.

KEY  Hob  Oven  Fridge/freezer  Washing machine space  Tumble dryer space  Hot water cylinder  Cupboard
< Denotes where dimensions are taken from. All wardrobes are subject to site specification. Please see Sales Consultant for further details.

Traditional homes, built the way you remember