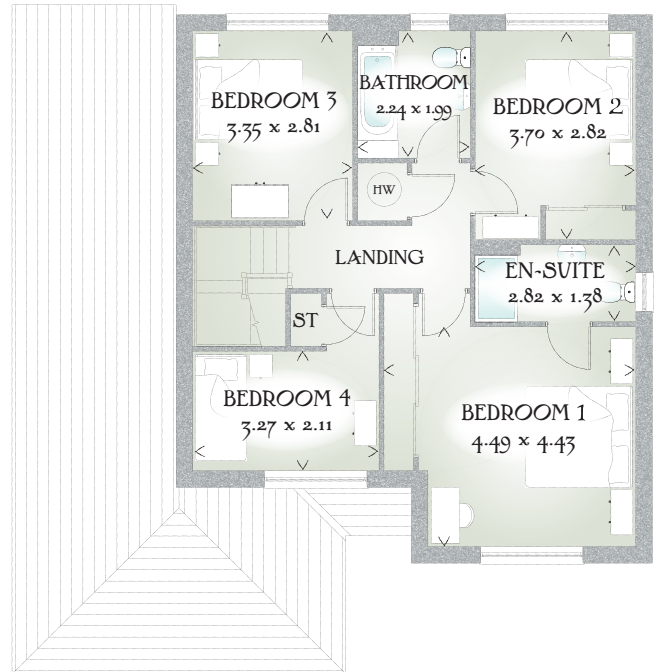
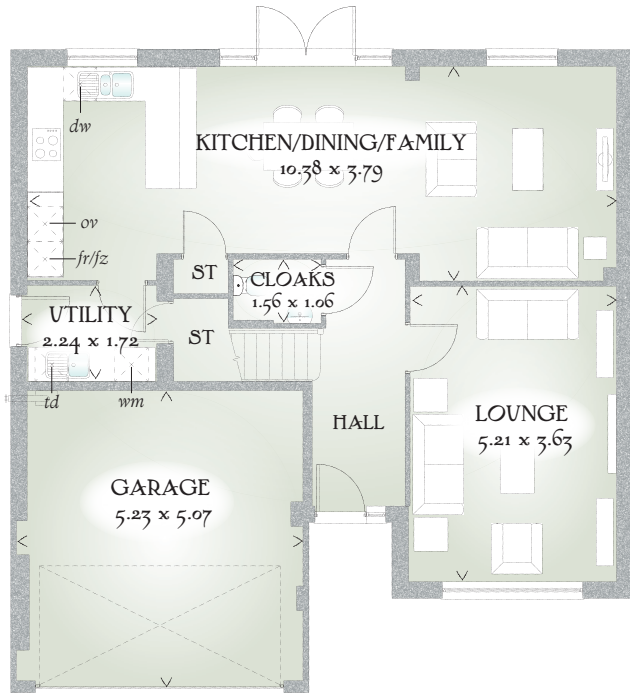




Welwyn

FOUR BEDROOM HOME





FOUR BEDROOM HOME

With a generous kitchen, dining and family area, a perfect centrality for family gatherings and a separate, spacious lounge for when you need a little peace and quiet, the Welwyn is a home designed to accommodate the flow of family life.

GROUND FLOOR

Lounge	17'1" x 11'11"	5.21 x 3.63 m
Kitchen/ Dining/ Family	34'1" x 12'5"	10.38 x 3.79 m
Cloaks	5'1" x 3'6"	1.56 x 1.06 m
Utility	7'4" x 5'8"	2.24 x 1.72 m
Garage	17'2" x 16'8"	5.23 x 5.07 m


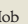
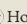
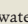
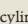
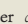
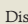
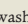
FIRST FLOOR

Bedroom 1	14'9" x 14'6"	4.49 x 4.43 m
En-suite	9'3" x 4'6"	2.82 x 1.38 m
Bedroom 2	12'2" x 9'3"	3.70 x 2.82 m
Bedroom 3	11'0" x 9'3"	3.35 x 2.81 m
Bedroom 4	10'9" x 6'1"	3.27 x 2.11 m
Bathroom	7'4" x 6'6"	2.24 x 1.99 m

CONSUMER CODE FOR HOME BUILDERS

www.consumercode.co.uk

Customers should note this illustration is an example of the Welwyn house type. All dimensions indicated are approximate and the furniture layout is for illustrative purposes only. Homes may be 'handed' (mirror image) versions of the illustrations, and may be detached, semi-detached or terraced. Materials used may differ from plot to plot including render and roof tile colours. Detailed plans and specifications are available for inspection for each plot at our Sales Centre during working hours and customers must check their individual specifications prior to making a reservation.

KEY  Hob  Hot water cylinder  Dishwasher  Oven  Fridge/Freezer  Washing machine  Tumble dryer  Cupboard

< Denotes where dimensions are taken from. All wardrobes are subject to site specification. Please see Sales Consultant for further details.

Traditional homes, built the way you remember

 **REDROW**
A BETTER WAY TO LIVE