



Amington Links

APARTMENTS

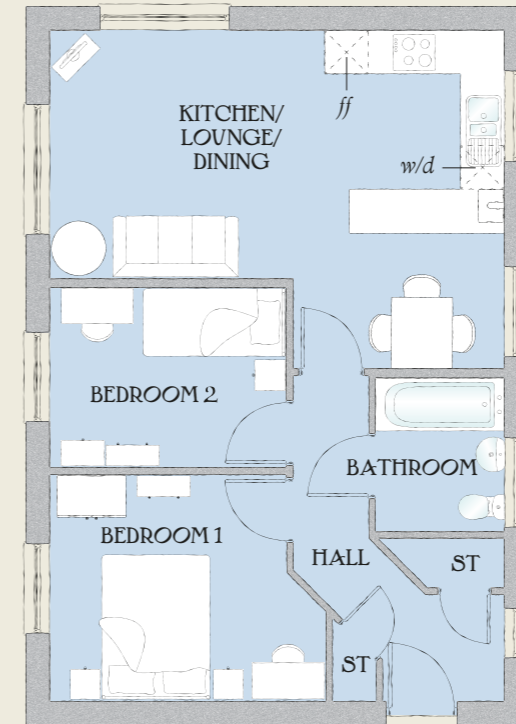
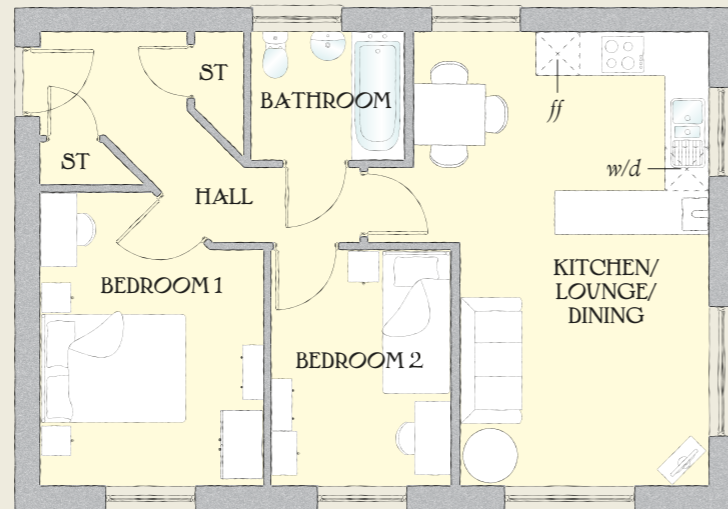


 REDROW

Amington Links

APARTMENT TYPE 1 PLOTS 1, 4 & 7

Lounge/ Kitchen/ Dining	20'4" x 13'3"	6.20 x 4.05 m
Bedroom 1	12'10" x 10'2"	3.92 x 3.11 m
Bedroom 2/ Home Office	10'9" x 8'2"	3.28 x 2.50 m
Bathroom	7'0" x 5'10"	2.13 x 1.79 m

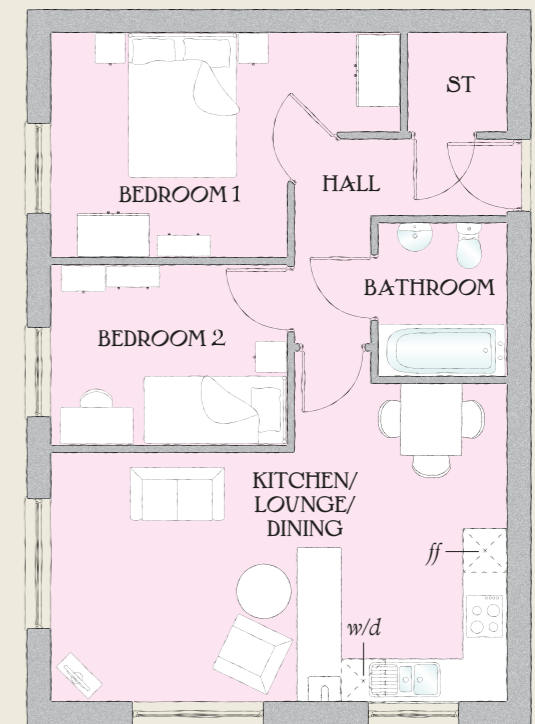


APARTMENT TYPE 2 PLOTS 2, 5 & 8

Kitchen/ Lounge/ Dining	20'3" x 15'9"	6.18 x 4.68 m
Bedroom 1	12'6" x 10'2"	3.82 x 3.11 m
Bedroom 2/ Home Office	10'9" x 8'2"	3.28 x 2.50 m
Bathroom	7'0" x 5'9"	2.13 x 1.75 m

APARTMENT TYPE 3 PLOTS 3, 6 & 9

Kitchen/ Dining/ Lounge	20'6" x 11'3"	6.25 x 3.42 m
Bedroom 1	15'9" x 10'2"	4.80 x 3.11 m
Bedroom 2/ Home Office	10'9" x 8'2"	3.28 x 2.50 m
Bathroom	7'0" x 5'9"	2.13 x 1.75 m



KEY

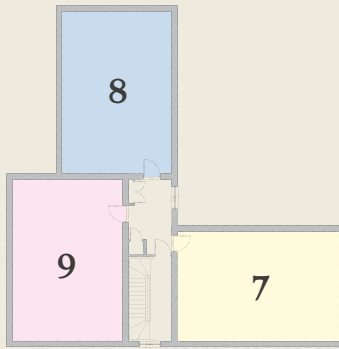
Hob Fridge/freezer w/d Washer/dryer

< Denotes where dimensions are taken from. All wardrobes are subject to site specification. Please see Sales Consultant for further details.

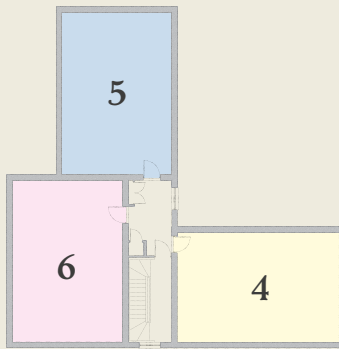
Customers should note this illustration is an example of the Amington Links Apartments. Please refer to your sales consultant for details of any elevational differences. All dimensions indicated are approximate. The specifications will vary from site to site and plot to plot. Detailed plans and specifications are available for inspection for each plot at our Sales Centre during working hours and customers must check their individual specifications prior to making a reservation. Please note, steel frame house types will benefit from a slight increase to some room sizes.

Traditional homes, built the way you remember

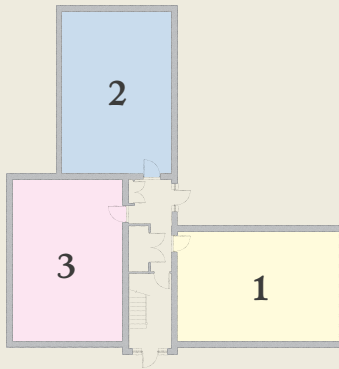
REDROW
A BETTER WAY TO LIVE



SECOND FLOOR



FIRST FLOOR



GROUND FLOOR

**CONSUMER
CODE FOR
HOME BUILDERS**
www.consumercode.co.uk

