



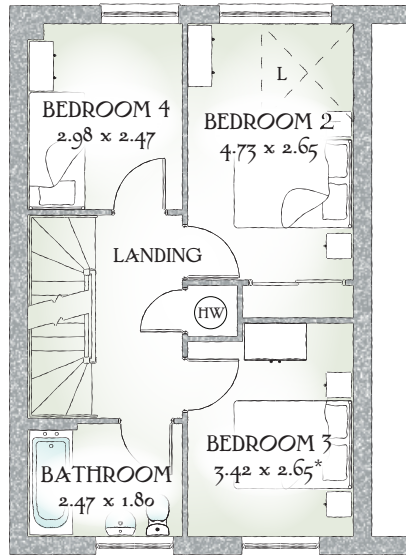
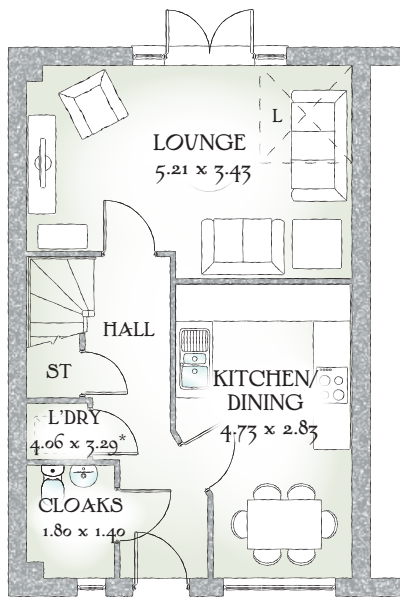
Kenilworth

FOUR BEDROOM HOME





Kenilworth



Carefully considered design elevates this three storey home above its townhouse rivals, creating a superb home of spacious rooms that reach their peak in the exceptional second floor master suite, which is so much more than just a bedroom.

FOUR BEDROOM HOME

GROUND FLOOR

Lounge	17'1" x 11'3"	5.21 x 3.43m
Kitchen/ Dining	15'6" x 9'3"	4.73 x 2.83m
Cloaks	5'11" x 4'7"	1.80 x 1.40m

FIRST FLOOR

Bedroom 2	15'6" x 8'8"	4.73 x 2.65m
Bedroom 3	11'3" x 8'8"	3.42 x 2.65m
Bedroom 4	9'9" x 8'1"	2.98 x 2.47m
Bathroom	8'1" x 5'11"	2.47 x 1.80m

SECOND FLOOR

Bedroom 1	20'8" x 13'5"	6.29 x 4.10m
En-suite	7'6" x 5'10"	2.28 x 1.78m

Customers should note this illustration is an example of The Kenilworth house type. All dimensions indicated are approximate and furniture layout is for illustrative purposes only. Homes may be 'handed' (mirror image) versions of the illustrations, and may be detached, semi-detached or terraced. Materials used may differ from plot to plot including render and roof tile colours. Detailed plans and specifications are available for inspection for each plot at our Sales Centre during working hours and customers must check their individual specifications prior to making a reservation.

KEY Hob Hot water cylinder ST Cupboard L Lift
 * Max dimensions Note: Bedroom dimensions taken into wardrobe recess. All wardrobes are subject to site specification. Please see Sales Consultant for further details.

Traditional homes, built the way you remember

