

The Cambridge

Four Bedroom Home



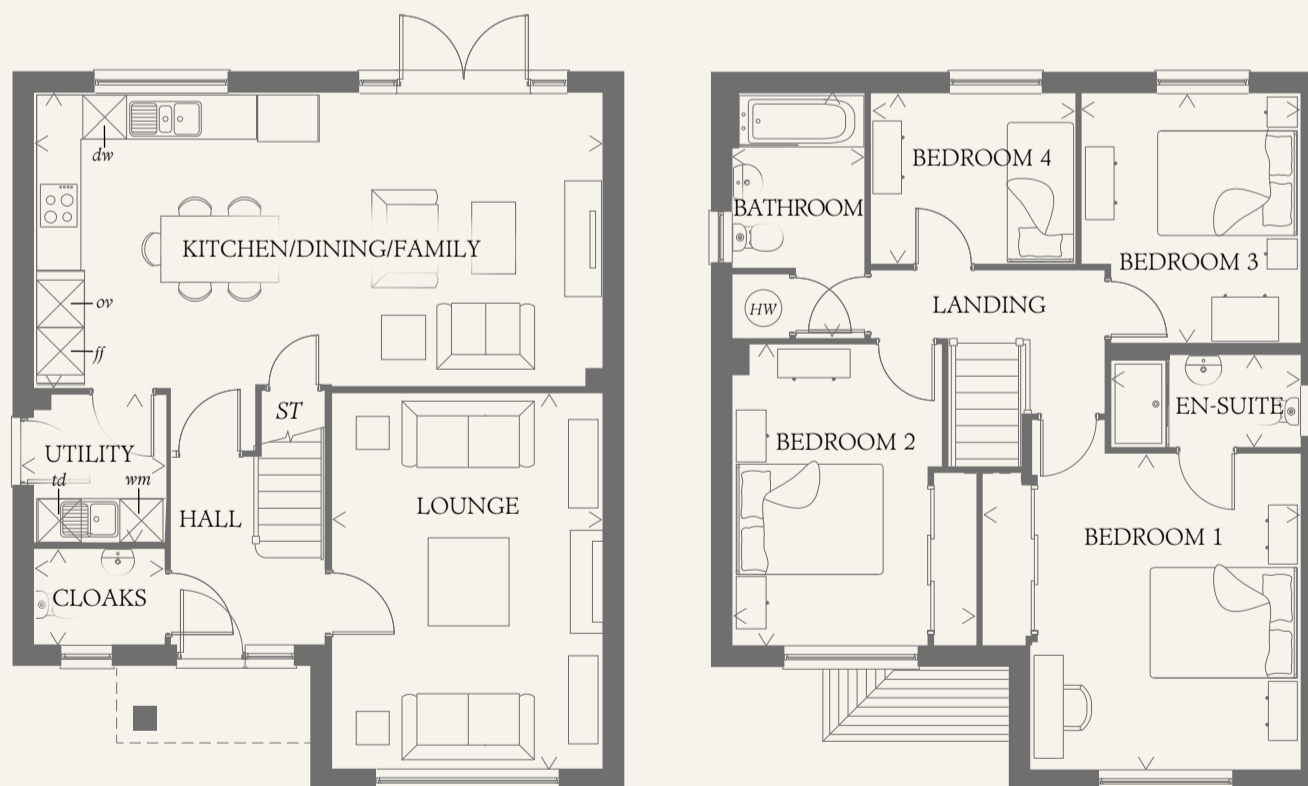
From first glance it is clear that the Cambridge has been designed by an architect who understands the dynamics of family life. This substantial property maintains the fine balance between time together and personal space by providing an ideal family area, a comfortable lounge and four bedrooms.

GROUND FLOOR

LOUNGE	16'7" x 11'11"	5.05 x 3.63 m
KITCHEN/ DINING/ FAMILY	25'2" x 13'1"	7.68 x 3.99 m
CLOAKS	5'9" x 4'2"	1.75 x 1.28 m
UTILITY	6'7" x 5'9"	2.01 x 1.75 m

FIRST FLOOR

BEDROOM 1	14'1" x 14'0"	4.30 x 4.27 m
EN-SUITE	8'5" x 4'1"	2.56 x 1.25 m
BEDROOM 2	13'4" x 10'10"	4.06 x 3.29 m
BEDROOM 3	11'1" x 9'9"	3.37 x 2.96 m
BEDROOM 4	9'1" x 7'6"	2.78 x 2.29 m
BATHROOM	10'10" x 5'10"	3.30 x 1.77 m



Customers should note this illustration is an example of the Cambridge house type. All dimensions indicated are approximate and furniture layout is for illustrative purposes only. Homes may be 'handed' (mirror image) versions of the illustrations, and may be detached, semi-detached or terraced. Materials used may differ from plot to plot including render and roof tile colours. Detailed plans and specifications are available for inspection for each plot at our Sales Centre during working hours and customers must check their individual specifications prior to making a reservation.

< Denotes where dimensions are taken from. All wardrobes are subject to site specification. Please see Sales Consultant for further details.

KEY			
	Hob		Tumble dryer space
	Oven		Hot water cylinder
	Fridge/freezer		Cupboard
	Washing machine space		
	Dishwasher space		



The Cambridge

Four Bedroom Home



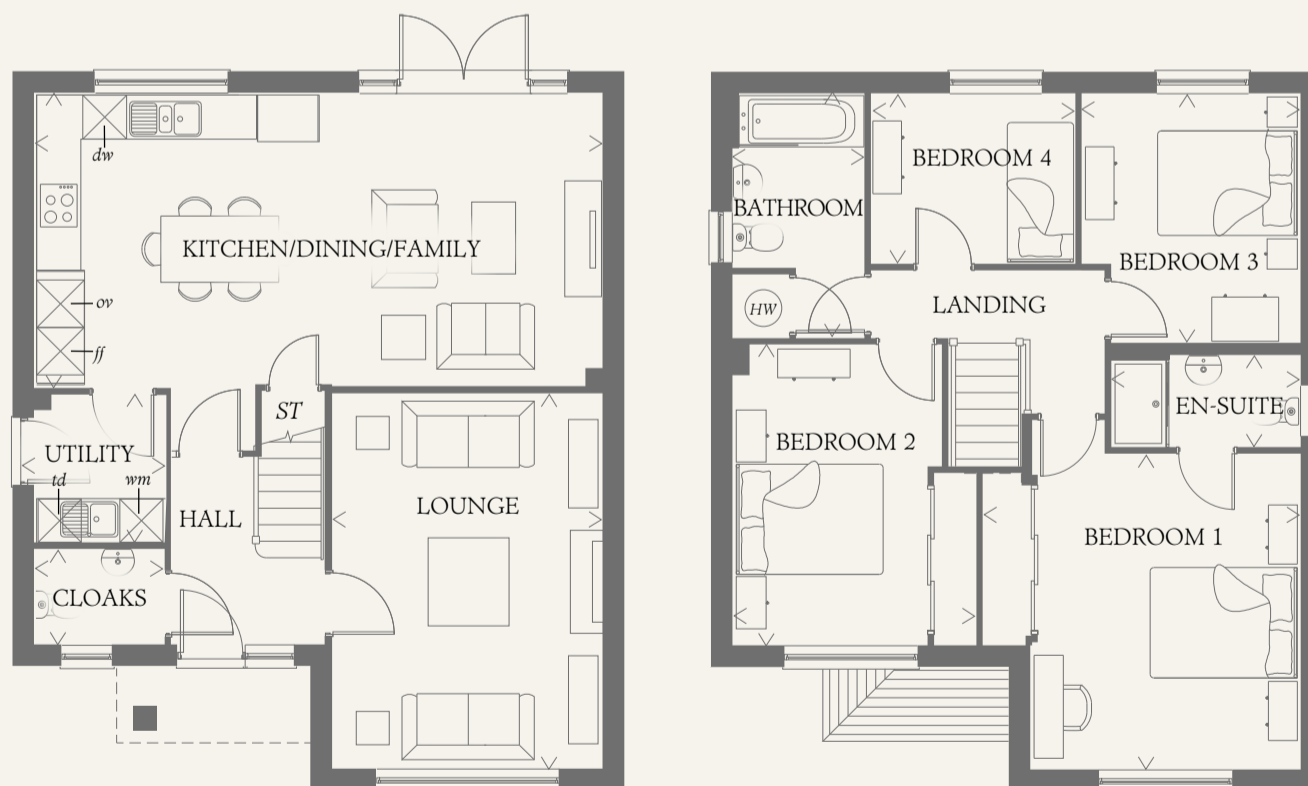
From first glance it is clear that the Cambridge has been designed by an architect who understands the dynamics of family life. This substantial property maintains the fine balance between time together and personal space by providing an ideal family area, a comfortable lounge and four bedrooms.

GROUND FLOOR

LOUNGE	16'7" x 11'11"	5.05 x 3.63 m
KITCHEN/ DINING/ FAMILY	25'2" x 13'1"	7.68 x 3.99 m
CLOAKS	5'9" x 4'2"	1.75 x 1.28 m
UTILITY	6'7" x 5'9"	2.01 x 1.75 m

FIRST FLOOR

BEDROOM 1	14'1" x 14'0"	4.30 x 4.27 m
EN-SUITE	8'5" x 4'1"	2.56 x 1.25 m
BEDROOM 2	13'4" x 10'10"	4.06 x 3.29 m
BEDROOM 3	11'1" x 9'9"	3.37 x 2.96 m
BEDROOM 4	9'1" x 7'6"	2.78 x 2.29 m
BATHROOM	10'10" x 5'10"	3.30 x 1.77 m



Customers should note this illustration is an example of the Cambridge house type. All dimensions indicated are approximate and furniture layout is for illustrative purposes only. Homes may be 'handed' (mirror image) versions of the illustrations, and may be detached, semi-detached or terraced. Materials used may differ from plot to plot including render and roof tile colours. Detailed plans and specifications are available for inspection for each plot at our Sales Centre during working hours and customers must check their individual specifications prior to making a reservation.

< Denotes where dimensions are taken from. All wardrobes are subject to site specification. Please see Sales Consultant for further details.

KEY			
	Hob	<i>td</i>	Tumble dryer space
<i>ov</i>	Oven		Hot water cylinder
<i>ff</i>	Fridge/freezer	<i>ST</i>	Cupboard
<i>wm</i>	Washing machine space		
<i>dw</i>	Dishwasher space		

