



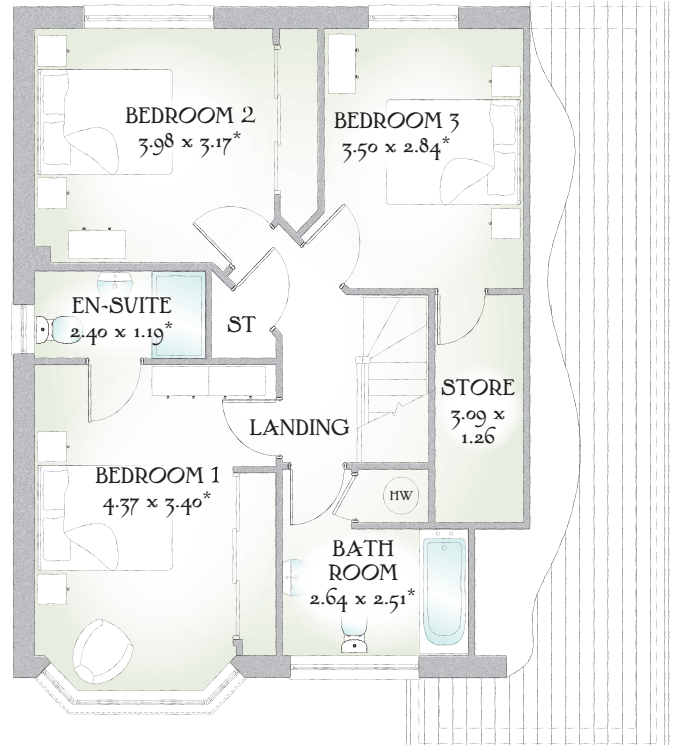
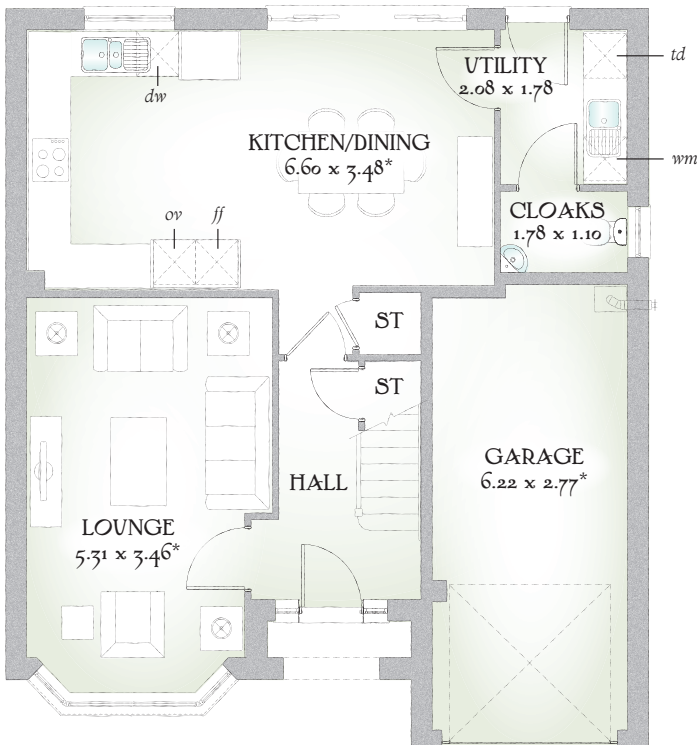
# Worcester

THREE BEDROOM HOME



 REDROW





## THREE BEDROOM HOME

We understand how a little extra space can go a long way to enhancing your home, and so we've given this fabulous family home three generous double bedrooms, so everyone has the room they need.

### GROUND FLOOR

Lounge	17'5" x 11'4"	5.31 x 3.46 m*
Kitchen/ Dining	21'8" x 11'5"	6.60 x 3.48 m*
Utility	6'10" x 5'10"	2.08 x 1.78 m
Cloaks	5'10" x 3'7"	1.78 x 1.10 m
Garage	20'5" x 9'1"	6.22 x 2.77 m*



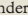
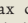
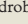
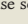
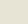

### FIRST FLOOR

Bedroom 1	14'4" x 11'2"	4.37 x 3.40 m*
En-suite	7'10" x 3'11"	2.40 x 1.19 m*
Bedroom 2	13'0" x 10'5"	3.98 x 3.17 m*
Bedroom 3	11'6" x 9'4"	3.50 x 2.84 m*
Bathroom	8'8" x 8'3"	2.64 x 2.51 m*
Store	10'2" x 4'2"	3.09 x 1.26 m

#### CONSUMER CODE FOR HOME BUILDERS

[www.consumercode.co.uk](http://www.consumercode.co.uk)

Customers should note this illustration is an example of The Worcester house type. All dimensions indicated are approximate and the furniture layout is for illustrative purposes only. Homes may be 'handed' (mirror image) versions of the illustrations, and may be detached, semi-detached or terraced. Materials used may differ from plot to plot including render and roof tile colours. Detailed plans and specifications are available for inspection for each plot at our Sales Centre during working hours and customers must check their individual specifications prior to making a reservation.

KEY  Hob  Oven  Fridge/freezer  Washing machine space  Dishwasher space  Tumble dryer space  Hot water cylinder  Cupboard

\*Max dimensions Note: Bedroom dimensions taken into wardrobe recess. All wardrobes are subject to site specification. Please see Sales Consultant for further details.

Traditional homes, built the way you remember

 **REDROW**  
A BETTER WAY TO LIVE