



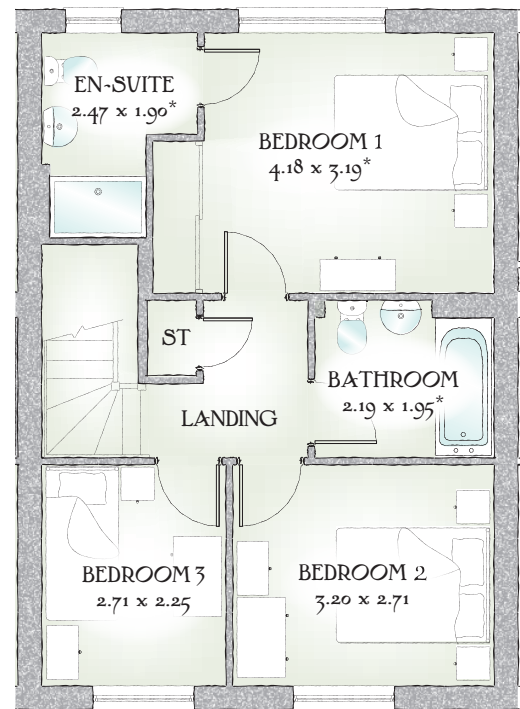
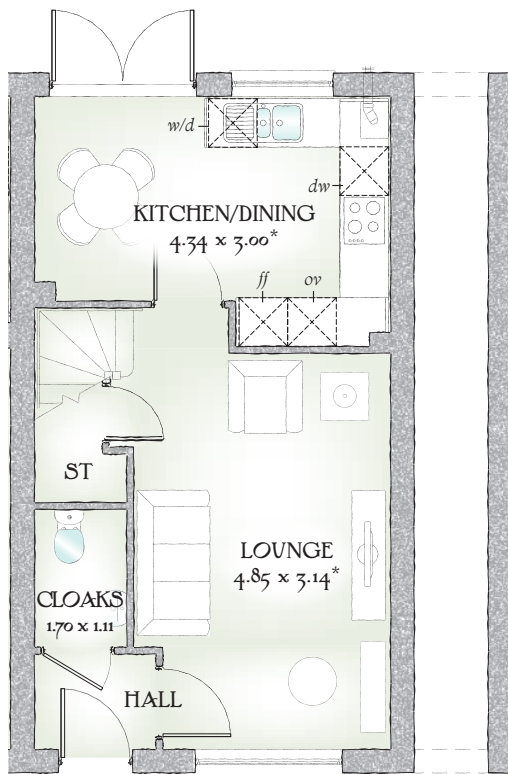
Ledbury³

THREE BEDROOM HOME





Ledbury³



THREE BEDROOM HOME

Simple, yet stylish, compact yet also undeniably chic, these superb homes offer the perfect combination of quality and value, space and savings, all created with the same high levels of craftsmanship that set all Redrow homes apart.

GROUND FLOOR

Lounge	15'11" x 10'4"	4.85 x 3.14 m ²
Kitchen/ Dining	14'3" x 10'1"	4.34 x 3.08 m ²
Cloaks	5'7" x 3'8"	1.70 x 1.11 m

FIRST FLOOR

Bedroom 1	13'9" x 10'6"	4.18 x 3.19 m ²
En-suite	8'1" x 6'3"	2.47 x 1.90 m ²
Bedroom 2	10'6" x 8'11"	3.20 x 2.71 m
Bedroom 3	8'11" x 7'5"	2.71 x 2.25 m
Bathroom	7'2" x 6'5"	2.19 x 1.95 m ²

CONSUMER CODE FOR HOME BUILDERS

www.consumercode.co.uk

Customers should note this illustration is an example of The Ledbury³ house type. All dimensions indicated are approximate and the furniture layout is for illustrative purposes only. Homes may be 'handed' (mirror image) versions of the illustrations, and may be detached, semi-detached or terraced. Materials used may differ from plot to plot including render and roof tile colours. Detailed plans and specifications are available for inspection for each plot at our Sales Centre during working hours and customers must check their individual specifications prior to making a reservation.

KEY Hob Oven Fridge/freezer Washing machine space Dishwasher space Tumble dryer space Hot water cylinder Cupboard

*Max dimensions Note: Bedroom dimensions taken into wardrobe recess. All wardrobes are subject to site specification. Please see Sales Consultant for further details.

Traditional homes, built the way you remember

