



# The Highgrove

*Five Bedroom Home*





# The Highgrove

*Five Bedroom Home*

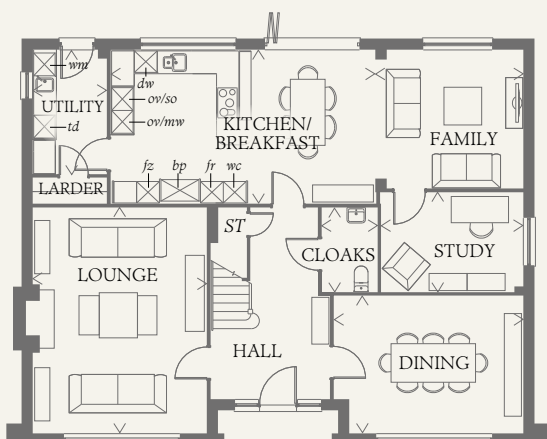




# The Highgrove

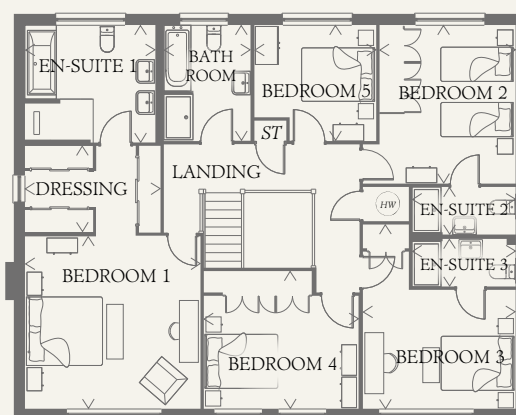
## Five Bedroom Home

The Highgrove is a masterpiece of modern architecture, that captures the charm & craftsmanship of days gone by, and combines these with the best in modern interior design, to create an elegant home of spacious proportions and outstanding quality.



### GROUND FLOOR

LOUNGE	19'7" x 14'10"	5.89 x 4.53 m
KITCHEN/ BREAKFAST	22'10" x 13'1"	6.96 x 4.00 m
DINING	16'2" x 11'10"	4.94 x 3.60 m
STUDY	12'2" x 8'6"	3.72 x 2.60 m
FAMILY	12'7" x 11'10"	3.84 x 3.60 m
CLOAKS	7'3" x 4'8"	2.20 x 1.41 m
LARDER	6'3" x 2'2"	1.90 x 0.66 m
UTILITY	10'8" x 6'3"	3.25 x 1.90 m



### FIRST FLOOR

BEDROOM 1	15'1" x 14'10"	4.59 x 4.51 m
EN-SUITE 1	11'2" x 10'1"	3.41 x 3.07 m
DRESSING	11'7" x 7'6"	3.54 x 2.66 m
BEDROOM 2	13'7" x 11'8"	4.13 x 3.55 m
EN-SUITE 2	8'10" x 4'0"	2.70 x 1.23 m
BEDROOM 3	12'0" x 10'1"	3.99 x 3.08 m
EN-SUITE 3	8'10" x 4'0"	2.70 x 1.23 m
BEDROOM 4	13'4" x 11'10"	4.07 x 3.60 m
BEDROOM 5	10'6" x 9'9"	3.19 x 2.98 m
BATHROOM	9'9" x 7'4"	2.98 x 2.23 m

#### CONSUMER CODE FOR HOME BUILDERS

[www.consumercode.co.uk](http://www.consumercode.co.uk)

Customers should note this illustration is an example of the Highgrove house type. All dimensions indicated are approximate and the furniture layout is for illustrative purposes only. Homes may be 'handed' (mirror image) versions of the illustrations, and may be detached, semi-detached or terraced. Materials used may differ from plot to plot including render and roof tile colours. Detailed plans and specifications are available for inspection for each plot at our Sales Centre during working hours and customers must check their individual specifications prior to making a reservation.

#### KEY

Hob  
 so Steam Oven  
 mw Microwave  
 fr Fridge  
 fz Freezer  
 ov Oven  
 bp Butlers Pantry

wm Washing machine space  
 dw Dishwasher space  
 td Tumble dryer space  
 wc Wine cooler  
 Hot water cylinder  
 ST Cupboard

Redrow.co.uk give notice that the property particulars and related information on this site, whilst believed to be accurate, are set as a general outline for guidance only. Intending purchasers should not rely on them as statements or representations of fact, but must satisfy themselves before physical inspection as to their availability, or by physical inspection of the property in question or otherwise as to their accuracy or fit for purpose. Consequently, no information displayed on this site (or linked sites) constitutes or forms part of a contract. Materials used may differ from plot to plot including render and roof tile colours.

< Denotes where dimensions are taken from. All wardrobes are subject to site specification. Please see Sales Consultant for further details.

THINK 198595. EF\_HIGH\_LLTH\_DM.1.0 RV