

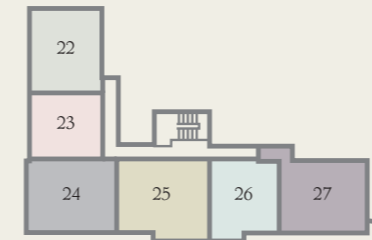
Regent Quay

SITTINGBOURNE

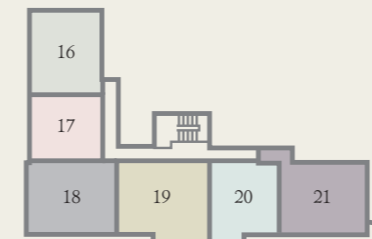


Welcome to Kingsferry Court at Regent Quay, a new collection of 16 modern one and two bedroom apartments. Crafted to a high quality, these homes have been thoughtfully designed towards the elements of modern living. Ideally positioned for commuters, these exquisite apartments are just a short walk from Sittingbourne Station and in easy reach of the M2, whilst a range of well-regarded schools and shopping lie right on the doorstep.

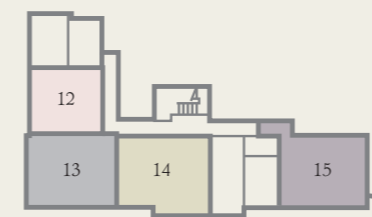
Welcome to Kingsferry Court



SECOND FLOOR



FIRST FLOOR



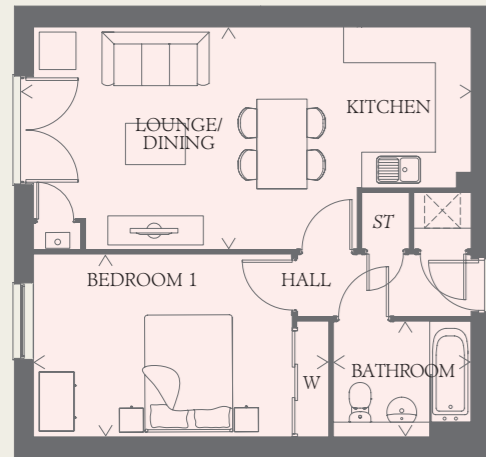
GROUND FLOOR

**CONSUMER
CODE FOR
HOME BUILDERS**
www.consumercode.co.uk



Regent Quay
Kingsferry Court





TYPE 1 PLOTS 12, 17 & 23

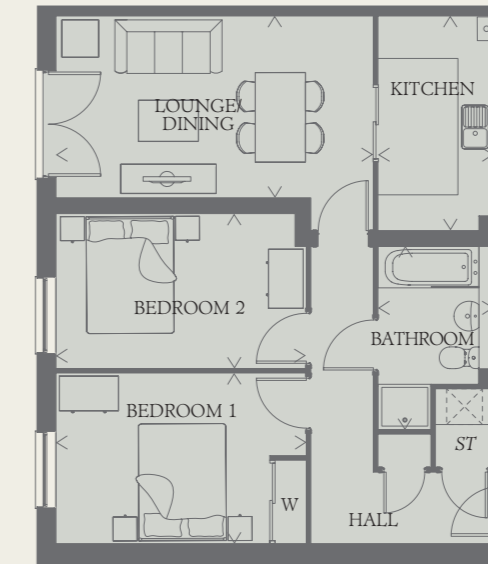
LOUNGE/ DINING	16'10" x 12'3"	5.13 x 3.73 m
KITCHEN	8'10" x 6'3"	2.70 x 1.91 m
BEDROOM 1	14'3" x 10'1"	4.34 x 3.07 m
BATHROOM	7'7" x 6'4"	2.31 x 1.94 m



TYPE 3 PLOTS 14, 19[†] & 25

LOUNGE/ DINING	17'6" x 11'3"	5.33 x 3.44 m
KITCHEN	11'7" x 6'8"	3.52 x 2.02 m
BEDROOM 1	16'4" x 9'5"	4.99 x 2.86 m
BEDROOM 2	16'4" x 9'4"	4.99 x 2.83 m
BATHROOM	10'9" x 6'4"	3.28 x 1.94 m

[†] Window variation to plot 19

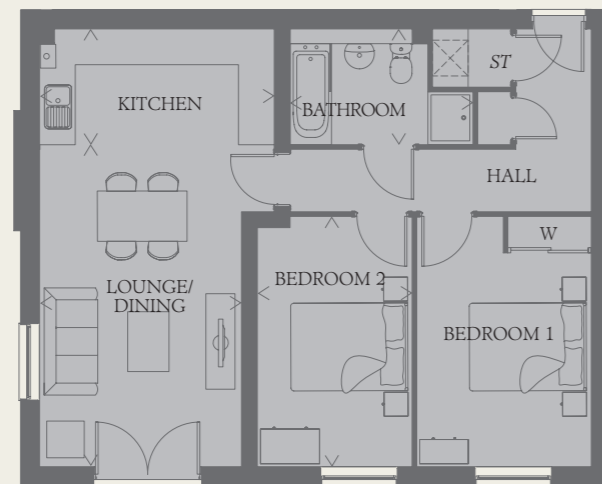


TYPE 5 PLOTS 16 & 22

LOUNGE/ DINING	17'6" x 10'0"	5.33 x 3.05 m
KITCHEN	11'10" x 6'4"	3.60 x 1.94 m
BEDROOM 1	13'9" x 9'5"	4.20 x 2.86 m
BEDROOM 2	13'9" x 8'6"	4.20 x 2.60 m
BATHROOM	10'1" x 6'4"	3.07 x 1.94 m

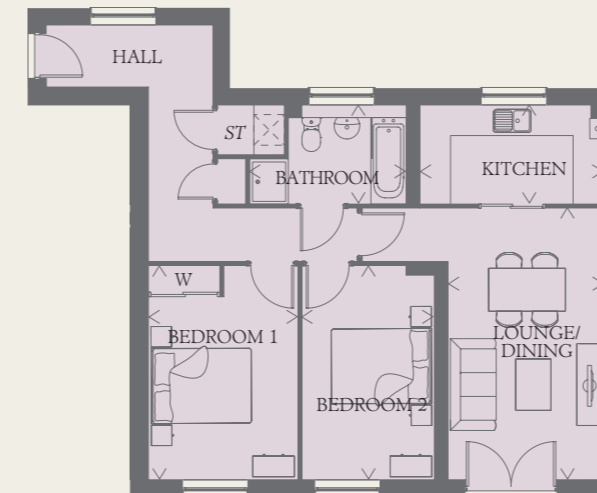
TYPE 2 PLOT 13, 18 & 24

LOUNGE/ DINING	17'6" x 10'11"	5.33 x 3.34 m
KITCHEN	12'11" x 6'8"	3.94 x 2.02 m
BEDROOM 1	13'9" x 9'7"	4.20 x 2.93 m
BEDROOM 2	13'9" x 8'6"	4.20 x 2.60 m
BATHROOM	10'1" x 6'4"	3.07 x 1.94 m



TYPE 4 PLOTS 15, 21 & 27

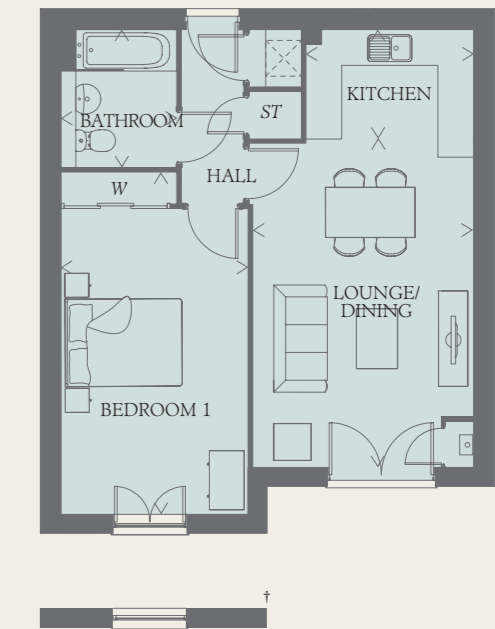
LOUNGE/ DINING	17'6" x 10'0"	5.33 x 3.05 m
KITCHEN	11'10" x 6'4"	3.60 x 1.94 m
BEDROOM 1	13'9" x 9'7"	4.20 x 2.93 m
BEDROOM 2	13'9" x 8'6"	4.20 x 2.60 m
BATHROOM	10'1" x 6'4"	3.07 x 1.94 m



TYPE 6 PLOTS 20 & 26[†]

LOUNGE/ DINING	17'10" x 12'2"	5.43 x 3.71 m
KITCHEN	9'3" x 6'3"	2.81 x 1.91 m
BEDROOM 1	18'10" x 10'4"	5.74 x 3.14 m
BATHROOM	7'7" x 6'4"	2.31 x 1.94 m

[†] Window variation to plot 26



Customers should note this illustration is an example of the Kingsferry Court apartment types. All dimensions indicated are approximate and the furniture layout is for illustrative purposes only. Homes may be 'handed' (mirror image) versions of the illustrations, and may be detached, semi-detached or terraced. Materials used may differ from plot to plot including render and roof tile colours. Detailed plans and specifications are available for inspection for each plot at our Sales Centre during working hours and customers must check their individual specifications prior to making a reservation.

- KEY**
- ST Cupboard
 - W Washer/dryer space
 - Wardrobe
 - Boiler