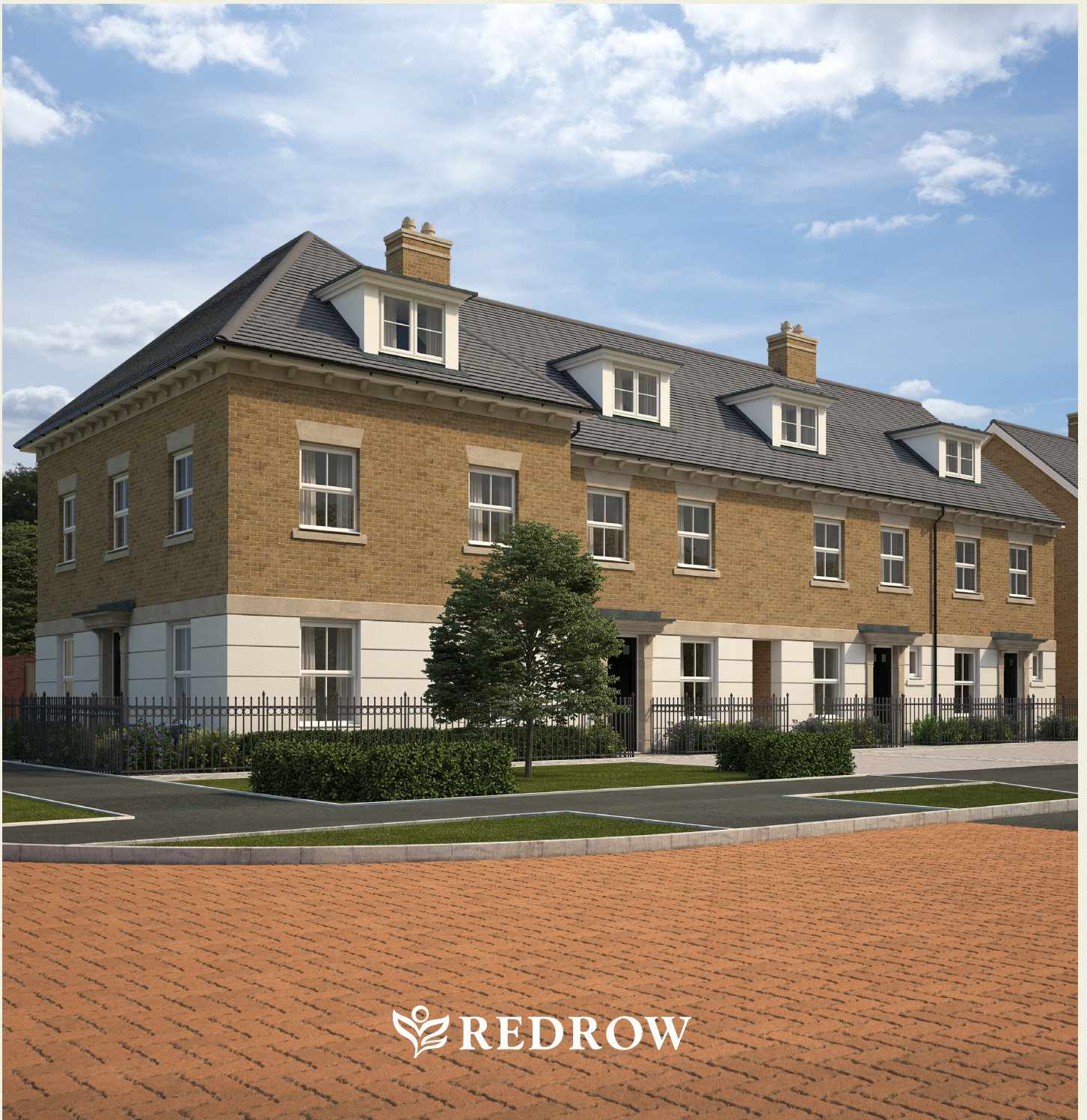




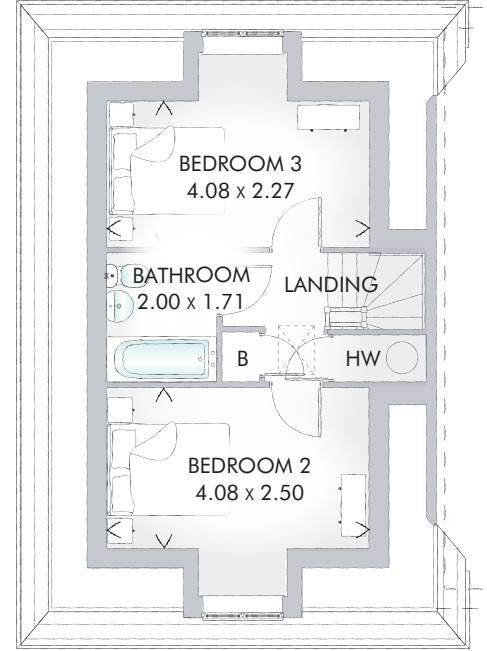
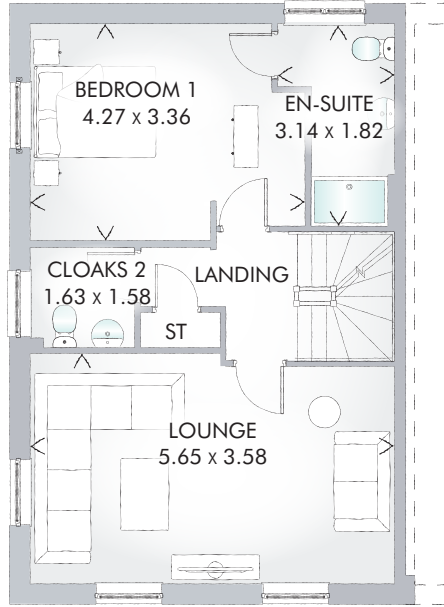
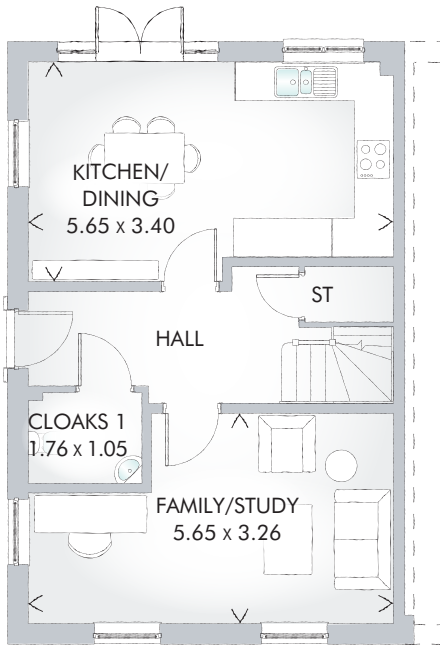
CAVENDISH^{END}

THREE BEDROOM HOME



 REDROW

CAVENDISH^{END}



With three living spaces and three double bedrooms set across two and a half floors, the Cavendish^{END} gives you the space to live your life your way, with room for the whole family to spend time together or to enjoy personal space.

THREE BEDROOM HOME

GROUND FLOOR

| | | |
|--------------------|----------------|---------------|
| Kitchen/ Dining | 18'6" x 11'2" | 5.65 x 3.40 m |
| Family/Study | 18'7" x 10'11" | 5.65 x 3.26 m |
| Cloaks 1 | 5'9" x 3'5" | 1.76 x 1.05 m |

FIRST FLOOR

| | | |
|-----------|---------------|---------------|
| Lounge | 18'6" x 11'9" | 5.65 x 3.58 m |
| Bedroom 1 | 14'0" x 11'0" | 4.27 x 3.36 m |
| En-suite | 10'4" x 6'0" | 3.14 x 1.82 m |
| Cloaks 2 | 5'4" x 5'2" | 1.63 x 1.58 m |

SECOND FLOOR

| | | |
|-----------|--------------|---------------|
| Bedroom 2 | 13'5" x 8'2" | 4.08 x 2.50 m |
| Bedroom 3 | 13'5" x 9'1" | 4.08 x 2.27 m |
| Bathroom | 6'6" x 5'7" | 2.00 x 1.71 m |

CONSUMER CODE FOR HOME BUILDERS

www.consumercode.co.uk

Customers should note this illustration is an example of the Cavendish^{END} house type. All dimensions indicated are approximate and furniture layout is for illustrative purposes only. Homes may be 'handed' (mirror image) versions of the illustrations, and may be detached, semi-detached or terraced. Materials used may differ from plot to plot including render and roof tile colours. Detailed plans and specifications are available for inspection for each plot at our Sales Centre during working hours and customers must check their individual specifications prior to making a reservation.

KEY Hob ST Cupboard Hot water cylinder
Note: Bedroom dimensions taken into wardrobe recess. All wardrobes are subject to site specification. Please see Sales Consultant for further details.

Traditional homes, built the way you remember

