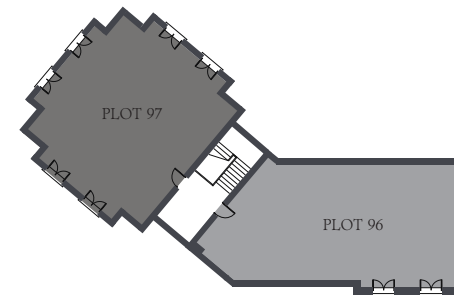




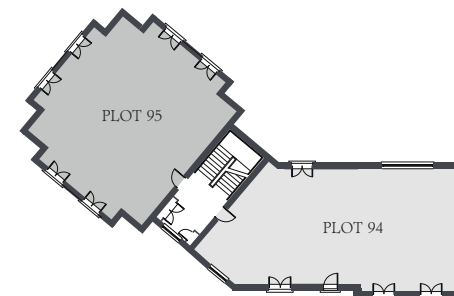
Welcome to Ryarsh Apartments, an exclusive new collection of five two-bedroom luxury apartments set within the already established Ryarsh Park development.

These contemporary apartments have been designed and finished to an exceptional standard, with a high specification to suit the needs of modern living.

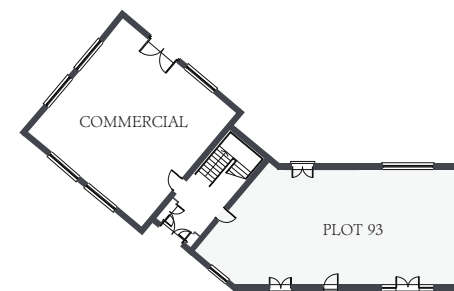
Welcome to Ryarsh Apartments



Second Floor



First Floor



Ground Floor

RYARSH APARTMENTS
Brooks Drive, West Malling, Kent ME19 5GS
Telephone: 01732 622327



EMS 667178



www.consumercode.co.uk

CGI's of apartment blocks and the overall development are indicative only. Customers should note this illustration is an example of the apartment type. Please refer to your sales consultant for details of any elevational differences. All dimensions indicated are approximate. The specifications will vary from site to site and plot to plot. Detailed plans and specifications are available for inspection for each plot at our Sales Centre during working hours and customers must check their individual specifications prior to making a reservation.

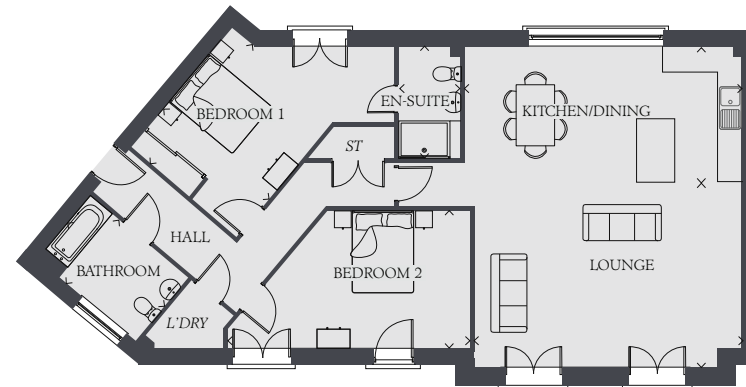


RYARSH
APARTMENTS



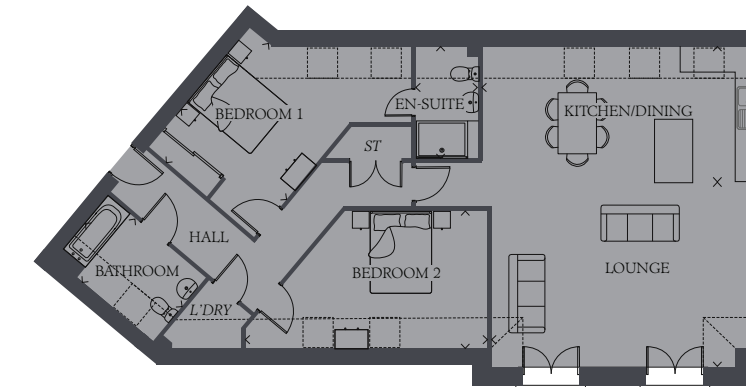
Ryarsb Apartments

The Ryarsb Apartments at Ryarsb Park are contemporary 2 bedroom homes that feature individually designed open-plan layouts. With spacious and stylish living areas, these apartments are made for entertaining friends and enjoying time with your family. With two allocated parking spaces with each apartments, Ryarsb Apartments is the perfect place to call home.



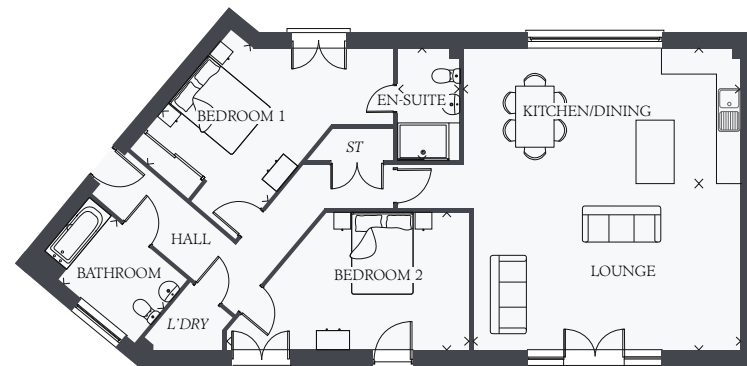
Apartment 2 Plot 94

LOUNGE	20'9" x 14'3"	6.33 x 4.35m
KITCHEN/DINING	21'8" x 10'6"	6.60 x 3.2m
BEDROOM 1	12'2" x 10'10"	3.72 x 3.31m
EN-SUITE	8'8" x 4'11"	2.65 x 1.50m
BEDROOM 2	18'12" x 10'8"	5.78 x 3.25m
BATHROOM	10'0" x 6'4"	3.06 x 1.92m



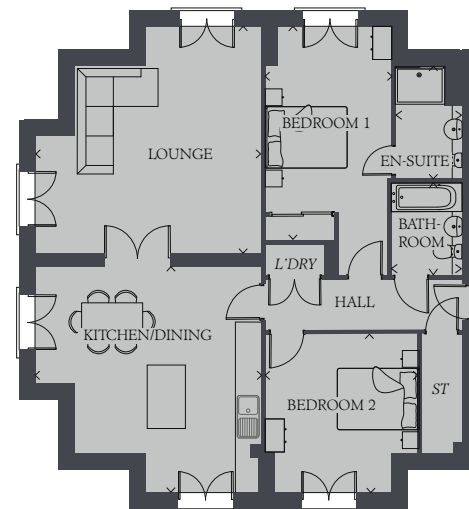
Apartment 4 Plot 96

LOUNGE	20'9" x 12'09"	6.33 x 3.66m
KITCHEN/DINING	21'8" x 12'9"	6.60 x 3.89m
BEDROOM 1	12'2" x 10'10"	3.72 x 3.31m
EN-SUITE	8'8" x 4'11"	2.65 x 1.50m
BEDROOM 2	18'12" x 10'8"	5.78 x 3.25m
BATHROOM	10'0" x 6'4"	3.06 x 1.92m



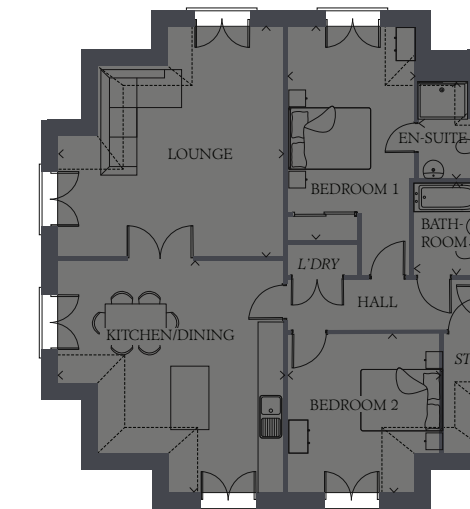
Apartment 1 Plot 93

LOUNGE	20'9" x 12'9"	6.33 x 3.90m
KITCHEN/DINING	21'8" x 10'6"	6.60 x 3.2m
BEDROOM 1	12'2" x 10'10"	3.72 x 3.31m
EN-SUITE	8'8" x 4'11"	2.65 x 1.50m
BEDROOM 2	18'12" x 10'8"	5.78 x 3.25m
BATHROOM	10'0" x 6'4"	3.06 x 1.92m



Apartment 3 Plot 95

LOUNGE	17'5" x 17'5"	5.32 x 5.32m
KITCHEN/DINING	17'5" x 17'4"	5.32 x 5.28m
BEDROOM 1	16'5" x 9'9"	5.01 x 2.98m
EN-SUITE	8'9" x 5'3"	2.66 x 1.61m
BEDROOM 2	12'2" x 11'12"	3.71 x 3.65m
BATHROOM	7'4" x 5'7"	2.23 x 1.7m



Apartment 5 Plot 97

LOUNGE	17'10" x 17'5"	5.44 x 5.32m
KITCHEN/DINING	17'9" x 17'5"	5.40 x 5.32m
BEDROOM 1	16'5" x 9'9"	5.01 x 2.98m
EN-SUITE	7'4" x 5'4"	2.23 x 1.61m
BEDROOM 2	12'2" x 11'12"	3.71 x 3.65m
BATHROOM	7'4" x 5'7"	2.23 x 1.7m

Customers should note this illustration is an example of the Ryarsb Apartments. All dimensions indicated are approximate and the furniture layout is for illustrative purposes only. Homes may be 'handed' (mirror image) versions of the illustrations. Materials used may differ from plot to plot. Detailed plans and specifications are available for inspection for each plot at our Sales Centre during working hours and customers must check their individual specifications prior to making a reservation.

KEY
 ST Cupboard
 L'DRY Laundry Cupboard