

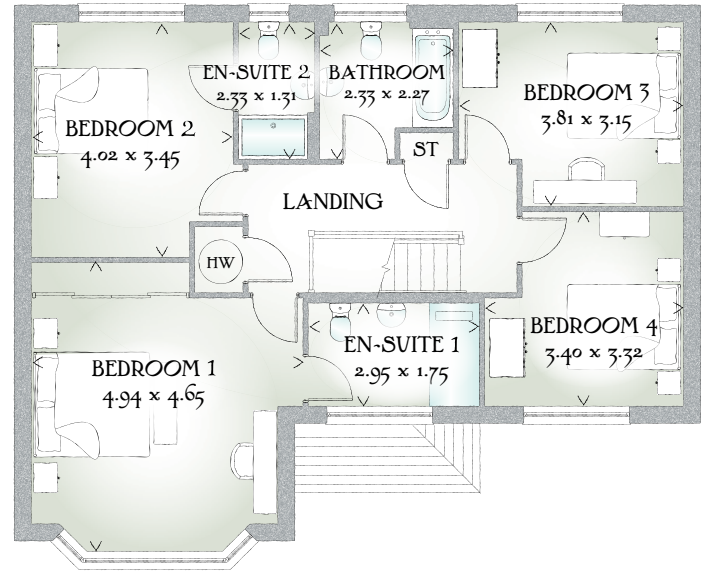
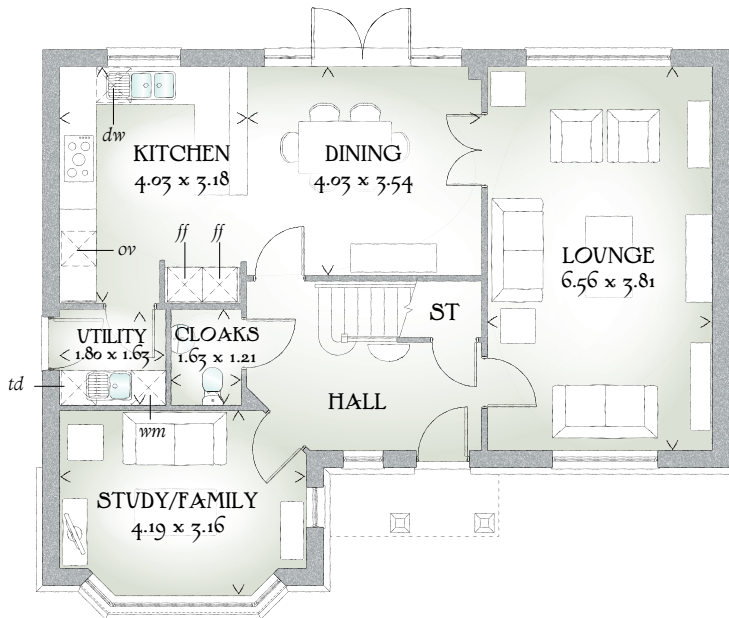


# Balmoral

FOUR BEDROOM HOME



 REDROW



## FOUR BEDROOM HOME

Arriving at the portico covered entrance, rich in the design details of a bygone age of craftsmanship and quality. Yet it remains as contemporary today as it would have been at the peak of the arts and crafts movement that inspired its design.

### GROUND FLOOR

|                  |               |               |
|------------------|---------------|---------------|
| Lounge           | 21'6" x 12'6" | 6.56 x 3.81 m |
| Kitchen          | 13'3" x 10'5" | 4.03 x 3.18 m |
| Dining           | 13'3" x 11'7" | 4.03 x 3.54 m |
| Study/<br>Family | 13'9" x 10'4" | 4.19 x 3.16 m |
| Cloaks           | 5'4" x 4'10"  | 1.63 x 1.21 m |
| Utility          | 5'11" x 5'4"  | 1.80 x 1.63 m |


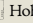
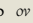
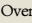

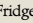
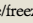
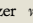
### FIRST FLOOR

|            |                |               |
|------------|----------------|---------------|
| Bedroom 1  | 16'2" x 15'3"  | 4.94 x 4.65 m |
| En-suite 1 | 9'8" x 5'9"    | 2.95 x 1.75 m |
| Bedroom 2  | 13'2" x 11'4"  | 4.02 x 3.45 m |
| En-suite 2 | 7'8" x 4'4"    | 2.33 x 1.31 m |
| Bedroom 3  | 12'6" x 10'4"  | 3.81 x 3.15 m |
| Bedroom 4  | 11'2" x 10'11" | 3.40 x 3.32 m |
| Bathroom   | 7'8" x 7'5"    | 2.33 x 2.27 m |

#### CONSUMER CODE FOR HOME BUILDERS

[www.consumercode.co.uk](http://www.consumercode.co.uk)

Customers should note this illustration is an example of The Balmoral house type. All dimensions indicated are approximate and the furniture layout is for illustrative purposes only. Homes may be 'handed' (mirror image) versions of the illustrations, and may be detached, semi-detached or terraced. Materials used may differ from plot to plot including render and roof tile colours. Detailed plans and specifications are available for inspection for each plot at our Sales Centre during working hours and customers must check their individual specifications prior to making a reservation.

KEY  Hob  Oven  Fridge/freezer  Washing machine space  Dishwasher space  Tumble dryer space  Hot water cylinder  Cupboard

< Denotes where dimensions are taken from. All wardrobes are subject to site specification. Please see Sales Consultant for further details.

Traditional homes, built the way you remember

 **REDROW**  
A BETTER WAY TO LIVE