



Amberley

THREE BEDROOM HOME



 REDROW

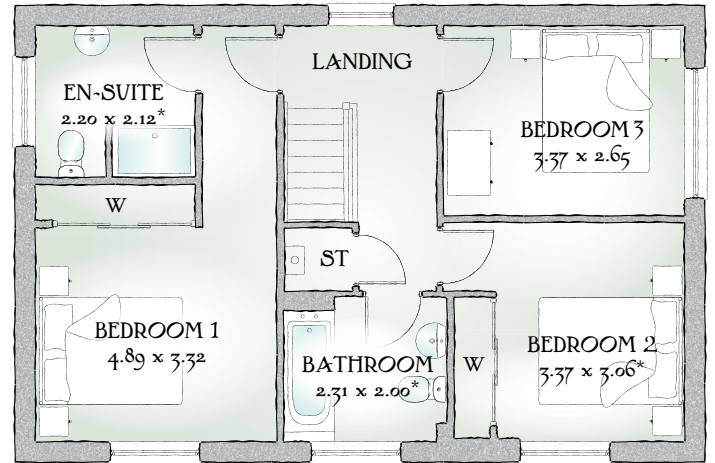
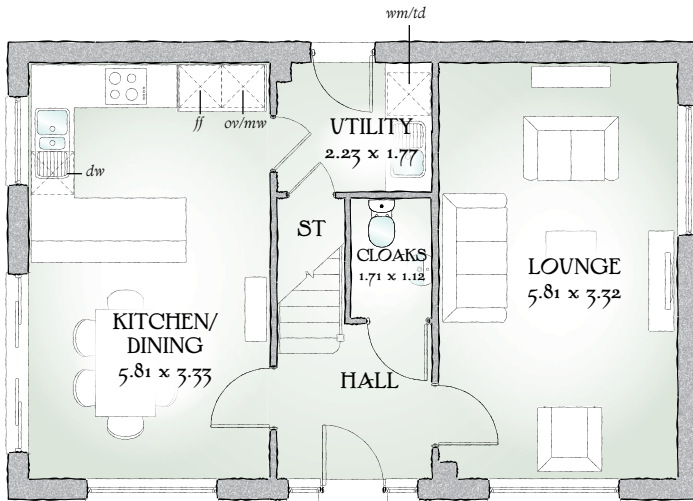


Amberley

THREE BEDROOM HOME



 REDROW



1136 SQ FT | THREE BEDROOM HOME

A home of real character and charm, the Amberley creates the perfect blend between the practical and the peaceful, the yin and the yang of daily life, to create a sense of true harmony.

GROUND FLOOR

Lounge	19'1" x 10'10"	5.81 x 3.32 m
Kitchen/ Dining	19'1" x 10'11"	5.81 x 3.33 m
Cloaks	5'7" x 3'8"	1.71 x 1.12 m
Utility	7'4" x 5'10"	2.23 x 1.77 m

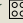
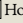
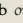
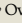
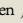
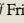
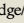
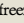
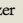
FIRST FLOOR

Bedroom 1	19'1" x 10'11"	5.81 x 3.32 m*
En-suite	7'3" x 6'11"	2.20 x 2.12 m*
Bedroom 2	11'11" x 10'0"	3.37 x 3.06 m*
Bedroom 3	11'1" x 8'8"	3.37 x 2.65 m
Bathroom	7'7" x 6'67"	2.31 x 2.00 m

CONSUMER CODE FOR HOME BUILDERS

www.consumercode.co.uk

Customers should note this illustration is an example of the Amberley house type. All dimensions indicated are approximate and furniture layout is for illustrative purposes only. Homes may be 'handed' (mirror image) versions of the illustrations, and may be detached, semi-detached or terraced. Materials used may differ from plot to plot including render and roof tile colours. Detailed plans and specifications are available for inspection for each plot at our Sales Centre during working hours and customers must check their individual specifications prior to making a reservation.

KEY  Hob  Oven  Fridge/freezer  Washing machine space  Dishwasher space  Microwave  Tumble dryer space  Cupboard  W Wardrobe

* Max dimensions Note: Bedroom dimensions taken into wardrobe recess. All wardrobes are subject to site specification. Please see Sales Consultant for further details.

Traditional homes, built the way you remember



REDROW
A BETTER WAY TO LIVE