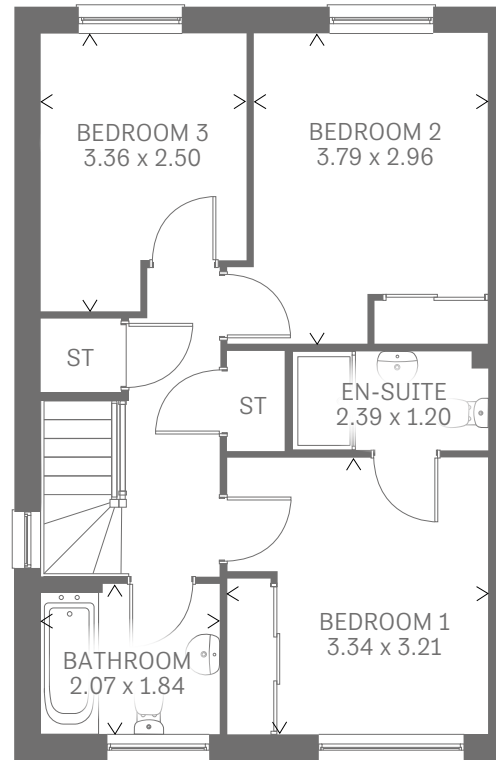
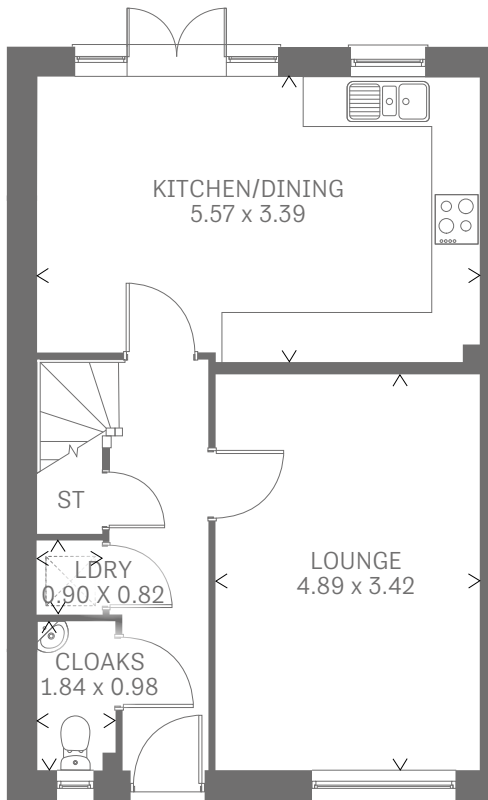


Severn

THREE BEDROOM SEMI DETACHED HOME





Three Bedroom Home

The Severn makes the most of a spacious first floor to create a third bedroom above the generous kitchen/dining area and private lounge, creating a stylish family home that has lots of space for everyone.

GROUND FLOOR

Lounge	16'1" x 11'3"	4.89 x 3.42 m
Kitchen/ Dining	18'3" x 11'1"	5.57 x 3.39 m
Cloaks	6'0" x 3'3"	1.84 x 0.98 m
Laundry	2'11" x 2'8"	0.90 x 0.82 m

FIRST FLOOR

Bedroom 1	10'11" x 10'6"	3.34 x 3.21 m
En-suite	7'10" x 3'11"	2.39 x 1.20 m
Bedroom 2	12'5" x 9'9"	3.79 x 2.96 m
Bedroom 3	11'0" x 8'2"	3.36 x 2.50 m
Bathroom	6'9" x 6'0"	2.07 x 1.84 m

CONSUMER CODE FOR HOME BUILDERS

www.consumercode.co.uk

Customers should note this illustration is an example of the Severn house type. All dimensions indicated are approximate and furniture layout is for illustrative purposes only. Homes may be 'handed' (mirror image) versions of the illustrations, and may be detached, semi-detached or terraced. Materials used may differ from plot to plot including render and roof tile colours. Detailed plans and specifications are available for inspection for each plot at our Sales Centre during working hours and customers must check their individual specifications prior to making a reservation.

KEY Hob Oven Fridge/freezer Wm Washing machine space dw Dishwasher space td Tumble dryer Hot water cylinder ST Cupboard

Note: Bedroom dimensions taken into wardrobe recess. All wardrobes are subject to site specification. Please see Sales Consultant for further details.

Traditional homes, built the way you remember

