



Leamington

THREE BEDROOM HOME



 REDROW

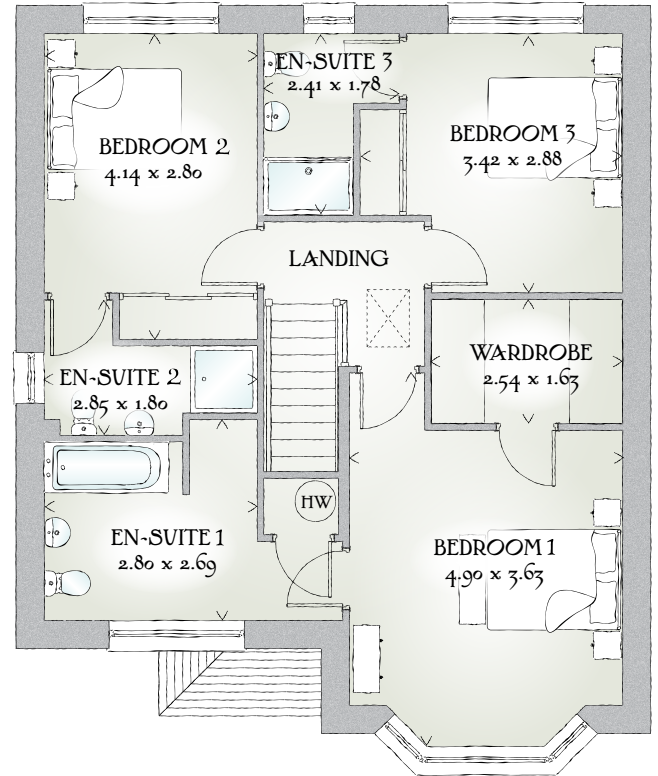
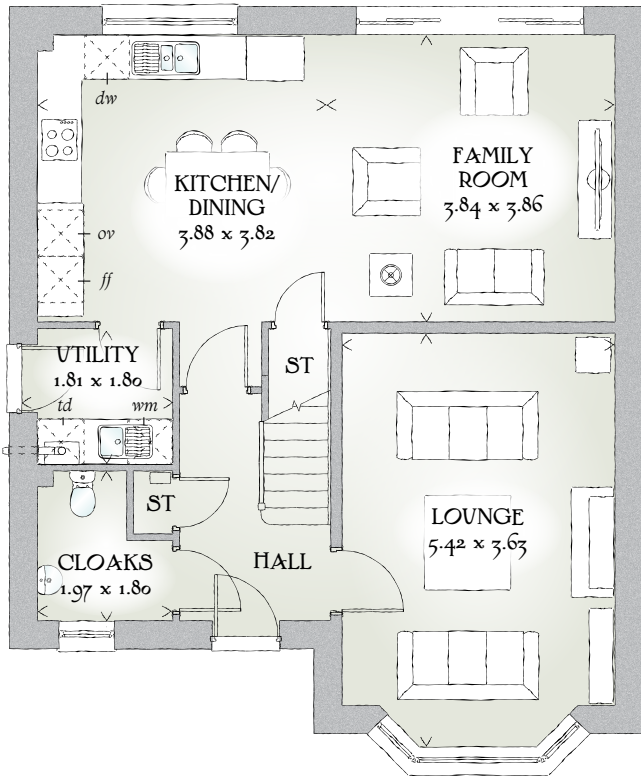


Leamington

THREE BEDROOM HOME



 REDROW



1416 SQ FT | THREE BEDROOM HOME

From the outside, the Leamington is complete with traditional touches like a covered porch, bay windows and a circular window in the cloaks. Once inside, this generously proportioned home also boasts three double bedrooms.

GROUND FLOOR

Lounge	17'9" x 11'11"	5.42 x 3.63 m
Kitchen/ Dining	12'8" x 12'6"	3.88 x 3.82 m
Utility	5'11" x 5'11"	1.81 x 1.80 m
Cloaks	6'6" x 5'11"	1.97 x 1.80 m
Family Room	12'7" x 12'8"	3.84 x 3.86 m

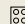
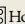
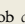
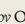
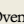
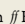
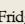
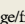
FIRST FLOOR

Bedroom 1	16'1" x 11'11"	4.90 x 3.63 m
En-suite 1	9'2" x 7'9"	2.80 x 2.69 m
Wardrobe	8'4" x 5'4"	2.54 x 1.63 m
Bedroom 2	13'7" x 9'2"	4.14 x 2.80 m
En-suite 2	9'3" x 5'10"	2.41 x 1.78 m
Bedroom 3	11'3" x 9'5"	3.42 x 2.88 m
En-suite 3	9'4" x 6'3"	2.85 x 1.80 m

CONSUMER CODE FOR HOME BUILDERS

www.consumercode.co.uk

Customers should note this illustration is an example of the Leamington house type. All dimensions indicated are approximate and furniture layout is for illustrative purposes only. Homes may be 'handed' (mirror image) versions of the illustrations, and may be detached, semi-detached or terraced. Materials used may differ from plot to plot including render and roof tile colours. Detailed plans and specifications are available for inspection for each plot at our Sales Centre during working hours and customers must check their individual specifications prior to making a reservation.

KEY  Hob  Oven  Fridge/freezer  Washing machine space  Dishwasher space  Tumble dryer space  Hot water cylinder  Cupboard

< Denotes where dimensions are taken from. All wardrobes are subject to site specification. Please see Sales Consultant for further details.

Traditional homes, built the way you remember

 **REDROW**
A BETTER WAY TO LIVE