



Richmond

FOUR BEDROOM HOME



 REDROW



Richmond

FOUR BEDROOM HOME





Richmond

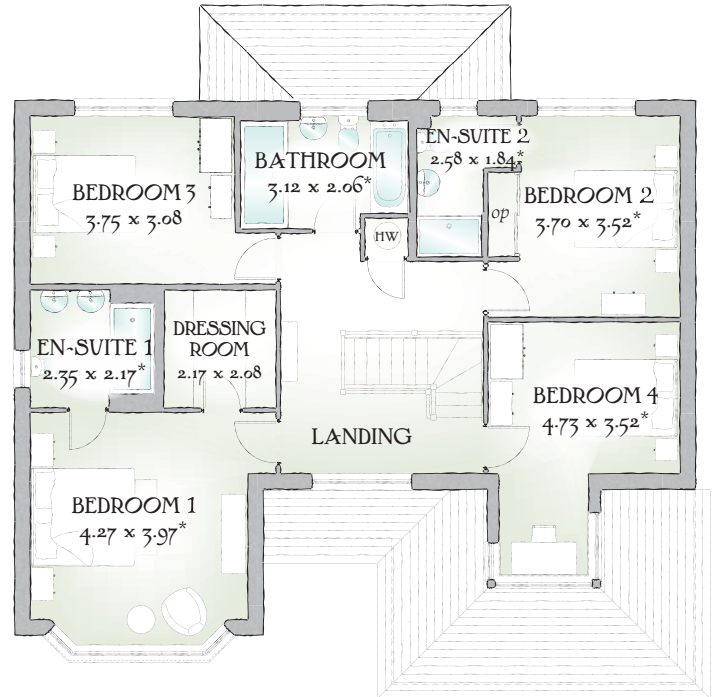
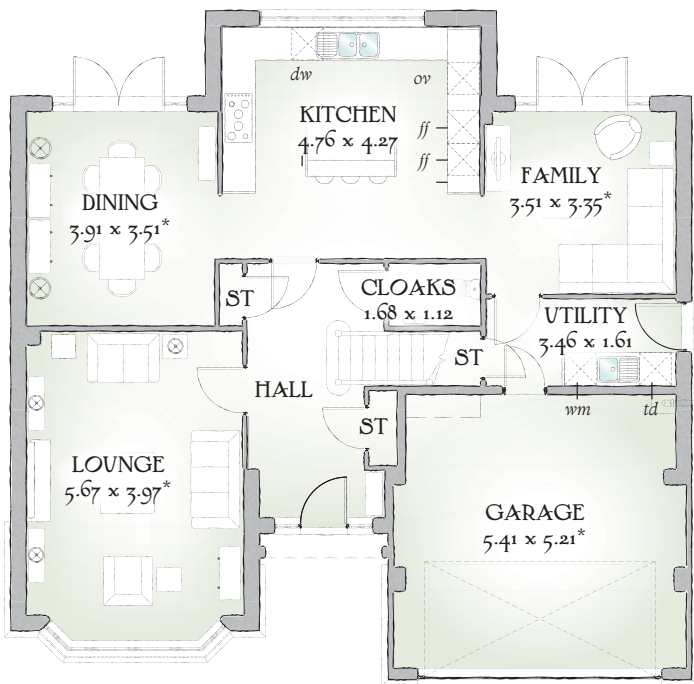
FOUR BEDROOM HOME



 REDROW



Richmond



FOUR BEDROOM HOME

Blending timeless arts and crafts touches with the finest of modern family living that sets the kitchen in its natural place at the heart of the home. The Richmond offers a rewarding quality of life that surpasses the very highest standards.

GROUND FLOOR

Lounge	18'7" x 13'0"	5.67 x 3.97 m*
Family	11'6" x 11'0"	3.51 x 3.35 m*
Dining	12'10" x 11'6"	3.91 x 3.51 m*
Kitchen	15'7" x 14'0"	4.76 x 4.27 m
Utility	11'4" x 5'3"	3.46 x 1.61 m
Cloaks	5'6" x 3'8"	1.68 x 1.12 m
Garage	17'9" x 17'1"	5.41 x 5.21 m*

FIRST FLOOR

Bedroom 1	14'0" x 13'0"	4.27 x 3.97 m*
En-suite 1	7'9" x 7'1"	2.35 x 2.17 m*
Dressing Room	7'1" x 6'10"	2.17 x 2.08 m
Bedroom 2	12'2" x 11'7"	3.70 x 3.52 m*
En-suite 2	8'6" x 6'0"	2.58 x 1.84 m*
Bedroom 3	12'4" x 10'1"	3.75 x 3.08 m
Bedroom 4	15'6" x 11'7"	4.73 x 3.52 m*
Bathroom	10'3" x 6'9"	3.12 x 2.06 m*

CONSUMER CODE FOR HOME BUILDERS

www.consumercode.co.uk

Customers should note this illustration is an example of The Richmond house type. All dimensions indicated are approximate and furniture layout is for illustrative purposes only. Homes may be 'handed' (mirror image) versions of the illustrations, and may be detached, semi-detached or terraced. Materials used may differ from plot to plot including render and roof tile colours. Detailed plans and specifications are available for inspection for each plot at our Sales Centre during working hours and customers must check their individual specifications prior to making a reservation.

KEY Hob Oven Fridge/freezer Washing machine space Dishwasher space Tumble dryer space ST Cupboard Hot water cylinder op Optional wardrobe

*Max dimensions Note: Bedroom dimensions taken into wardrobe recess. All wardrobes are subject to site specification. Please see Sales Consultant for further details.

Redrow.co.uk give notice that the property particulars and related information on this site, whilst believed to be accurate, are set as a general outline for guidance only. Intending purchasers should not rely on them as statements or representations of fact, but must satisfy themselves before physical inspection as to their availability, or by physical inspection of the property in question or otherwise as to their accuracy or fit for purpose. Consequently, no information displayed on this site (or linked sites) constitutes or forms part of a contract. Materials used may differ from plot to plot including render and roof tile colours.

Traditional homes, built the way you remember

