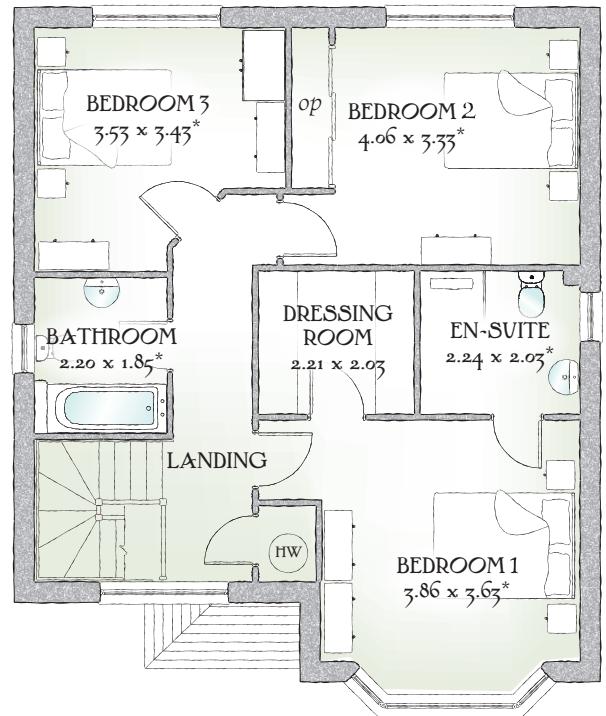
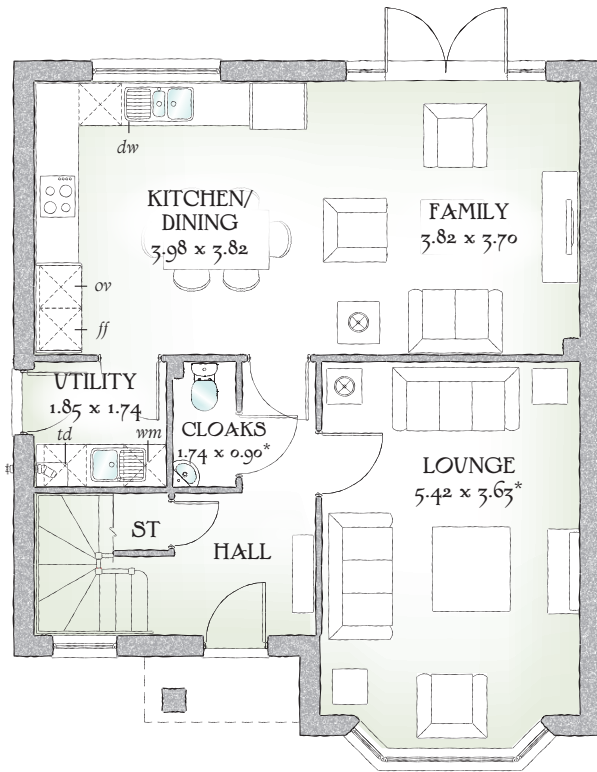




Leamington

THREE BEDROOM HOME





THREE BEDROOM HOME

From the outside, the Leamington is complete with traditional touches like a covered porch, bay windows and a circular window on the stairs. Once inside, this generously proportioned home also boasts three double bedrooms, with plenty of space for the family.

GROUND FLOOR

Kitchen/ Dining	13'1" x 12'6"	3.98 x 3.82 m
Family	12'6" x 12'2"	3.82 x 3.70 m
Lounge	17'9" x 11'11"	5.42 x 3.63 m*
Cloaks	5'9" x 2'11"	1.74 x 0.90 m*
Utility	6'1" x 5'9"	1.85 x 1.74 m


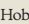
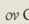
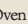
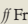
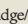
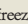
FIRST FLOOR

Bedroom 1	12'8" x 11'11"	3.86 x 3.63 m*
En-suite	7'4" x 6'8"	2.24 x 2.03 m*
Dressing Room	7'3" x 6'8"	2.21 x 2.03 m
Bedroom 2	13'4" x 10'11"	4.06 x 3.33 m
Bedroom 3	11'7" x 11'3"	3.53 x 3.43 m
Bathroom	7'3" x 6'1"	2.20 x 1.85 m

CONSUMER CODE FOR HOME BUILDERS

www.consumercode.co.uk

Customers should note this illustration is an example of The Leamington house type. All dimensions indicated are approximate and the furniture layout is for illustrative purposes only. Homes may be 'handed' (mirror image) versions of the illustrations, and may be detached, semi-detached or terraced. Materials used may differ from plot to plot including render and roof tile colours. Detailed plans and specifications are available for inspection for each plot at our Sales Centre during working hours and customers must check their individual specifications prior to making a reservation.

KEY  Hob  Oven  Fridge/freezer  Wm Washing machine space  dw Dishwasher space  td Tumble dryer space  HW Hot water cylinder ST Cupboard

*Max dimensions Note: Bedroom dimensions taken into wardrobe recess. All wardrobes are subject to site specification. Please see Sales Consultant for further details.

Traditional homes, built the way you remember

 **REDROW**
A BETTER WAY TO LIVE