



Ashbourne

THREE BEDROOM HOME



 REDROW

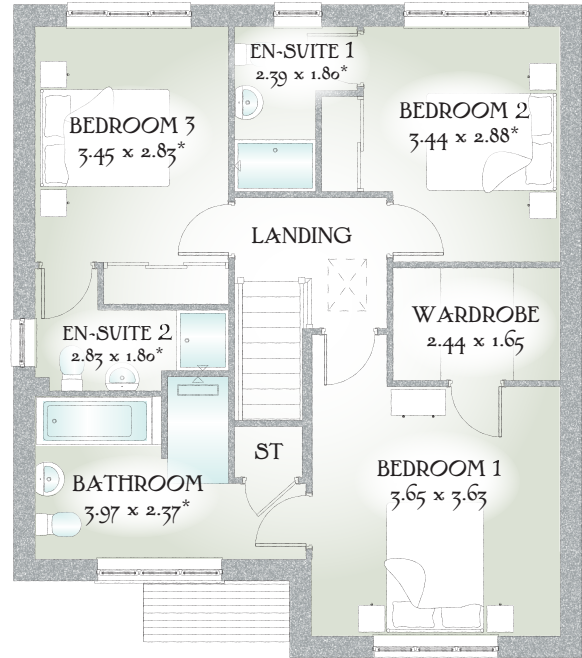
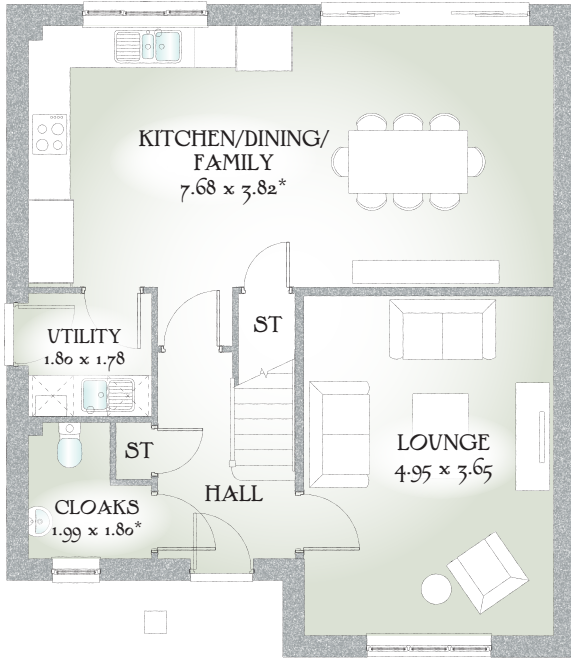


Ashbourne

THREE BEDROOM HOME



 REDROW



THREE BEDROOM HOME

The extensive size of the Ashbourne's ground floor is utilised fully, with the utility room providing extra storage every family needs. All bedrooms are served with en-suites, allowing for all family and guests to experience modern living at its best.

GROUND FLOOR

Lounge	16'3" x 11'11"	4.95 x 3.65 m
Kitchen/ Dining Family	25'2" x 12'6"	7.68 x 3.82 m*
Utility	5'11" x 5'10"	1.80 x 1.78 m
Cloaks	6'6" x 5'11"	1.99 x 1.80 m*




FIRST FLOOR

Bedroom 1	12'0" x 11'11"	3.65 x 3.63 m
Wardrobe	8'0" x 5'5"	2.44 x 1.65 m
Bathroom	13'0" x 7'9"	3.97 x 2.37 m*
Bedroom 2	11'4" x 9'5"	3.44 x 2.88 m*
En-suite 1	7'10" x 5'11"	2.39 x 1.80 m*
Bedroom 3	11'4" x 9'3"	3.45 x 2.83 m*
En-suite 2	9'3" x 5'11"	2.83 x 1.80 m*

CONSUMER CODE FOR HOME BUILDERS

www.consumercode.co.uk

Customers should note this illustration is an example of the Ashbourne house type. All dimensions indicated are approximate and furniture layout is for illustrative purposes only. Homes may be 'handed' (mirror image) versions of the illustrations, and may be detached, semi-detached or terraced. Materials used may differ from plot to plot including render and roof tile colours. Detailed plans and specifications are available for inspection for each plot at our Sales Centre during working hours and customers must check their individual specifications prior to making a reservation.

KEY  Hob  ST Cupboard  Loft Hatch

* Max dimensions Note: Bedroom dimensions taken into wardrobe recess. All wardrobes are subject to site specification. Please see Sales Consultant for further details.

Traditional homes, built the way you remember

 **REDROW**
A BETTER WAY TO LIVE