

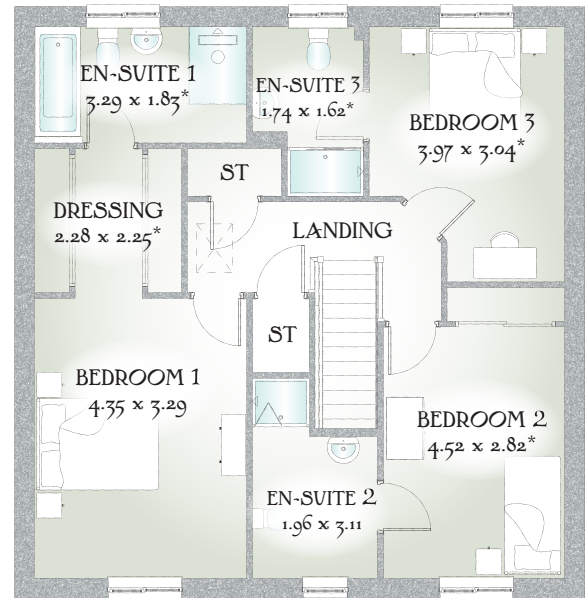
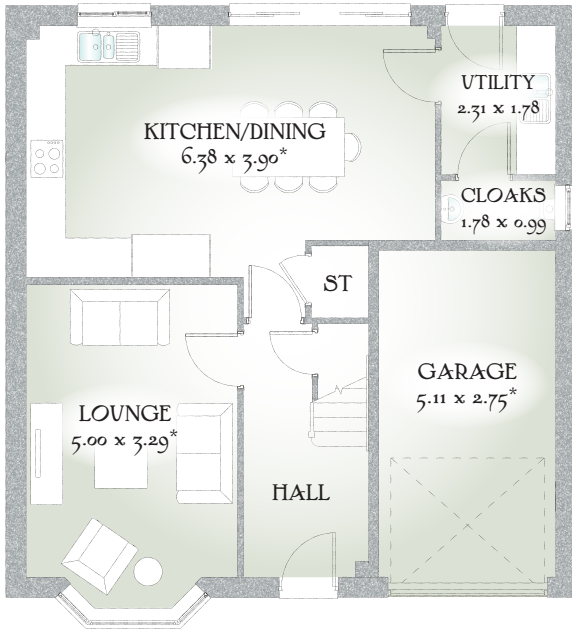


# Barrington

THREE BEDROOM HOME



 REDROW



## THREE BEDROOM HOME

This home epitomises family living with the kitchen/dining room allowing for all to reconnect, however an en-suite to all bedrooms creates a space for everyone to call their own. The perfect dynamic is shown through the juxtaposition between traditional bay windows and the extensive modern master bedroom.

### GROUND FLOOR

Lounge	16'5" x 10'10"	5.00 x 3.29 m*
Kitchen/ Dining	20'11" x 12'10"	6.38 x 3.90 m*
Utility	7'7" x 5'10"	2.31 x 1.78 m
Cloaks	5'10" x 3'3"	1.78 x 0.99 m
Garage	16'9" x 9'0"	5.11 x 2.75 m*


### FIRST FLOOR

Bedroom 1	14'3" x 10'10"	4.35 x 3.29 m
Dressing	7'6" x 7'5"	2.28 x 2.25 m*
En-suite 1	10'10" x 6'0"	3.29 x 1.83 m*
Bedroom 2	14'11" x 9'3"	4.52 x 2.82 m*
En-suite 2	6'5" x 10'2"	1.96 x 3.11 m
Bedroom 3	13'0" x 10'0"	3.97 x 3.04 m*
En-suite 3	5'8" x 5'4"	1.74 x 1.62 m*

#### CONSUMER CODE FOR HOME BUILDERS

[www.consumercode.co.uk](http://www.consumercode.co.uk)

Customers should note this illustration is an example of the Barrington house type. All dimensions indicated are approximate and furniture layout is for illustrative purposes only. Homes may be 'handed' (mirror image) versions of the illustrations, and may be detached, semi-detached or terraced. Materials used may differ from plot to plot including render and roof tile colours. Detailed plans and specifications are available for inspection for each plot at our Sales Centre during working hours and customers must check their individual specifications prior to making a reservation.

KEY  Hob ST Cupboard

\* Max dimensions Note: Bedroom dimensions taken into wardrobe recess. All wardrobes are subject to site specification. Please see Sales Consultant for further details.

Traditional homes, built the way you remember

 **REDROW**  
A BETTER WAY TO LIVE