



Bramham

FOUR BEDROOM HOME



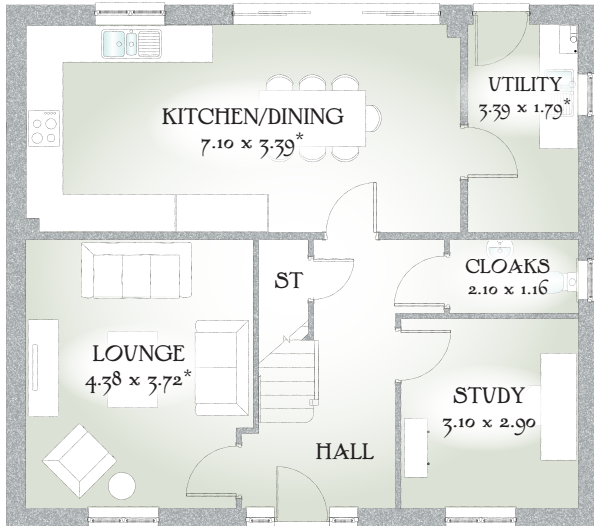
 REDROW



Bramham

FOUR BEDROOM HOME





FOUR BEDROOM HOME

The Bramham embodies a traditional layout, separate ground floor rooms gives enough space for everybody to relax, with the large open plan kitchen/dining room providing a space to entertain. With four double bedrooms, this home will grow with your family.

GROUND FLOOR

Lounge	14'4" x 12'2"	4.38 x 3.72 m*
Kitchen/ Dining	23'4" x 11'1"	7.10 x 3.39 m*
Utility	11'1" x 5'10"	3.39 x 1.79 m*
Cloaks	6'11" x 3'10"	2.10 x 1.16 m
Garage	10'2" x 9'6"	3.10 x 2.90 m

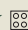
FIRST FLOOR

Bedroom 1	16'2" x 12'2"	4.93 x 3.72 m*
En-suite	7'3" x 5'5"	2.20 x 1.65 m
Bedroom 2	12'0" x 10'4"	3.66 x 3.14 m*
Bedroom 3	13'7" x 10'4"	4.13 x 3.14 m*
Bedroom 4	11'2" x 9'6"	3.40 x 2.89 m*
Bathroom	7'7" x 5'7"	2.31 x 1.71 m*

CONSUMER CODE FOR HOME BUILDERS

www.consumercode.co.uk

Customers should note this illustration is an example of The Bramham house type. All dimensions indicated are approximate and furniture layout is for illustrative purposes only. Homes may be 'handed' (mirror image) versions of the illustrations, and may be detached, semi-detached or terraced. Materials used may differ from plot to plot including render and roof tile colours. Detailed plans and specifications are available for inspection for each plot at our Sales Centre during working hours and customers must check their individual specifications prior to making a reservation.

KEY  Hob ST Cupboard

* Max dimensions Note: Bedroom dimensions taken into wardrobe recess. All wardrobes are subject to site specification. Please see Sales Consultant for further details.

Traditional homes, built the way you remember

 **REDROW**
A BETTER WAY TO LIVE