



Cusworth

THREE BEDROOM HOME



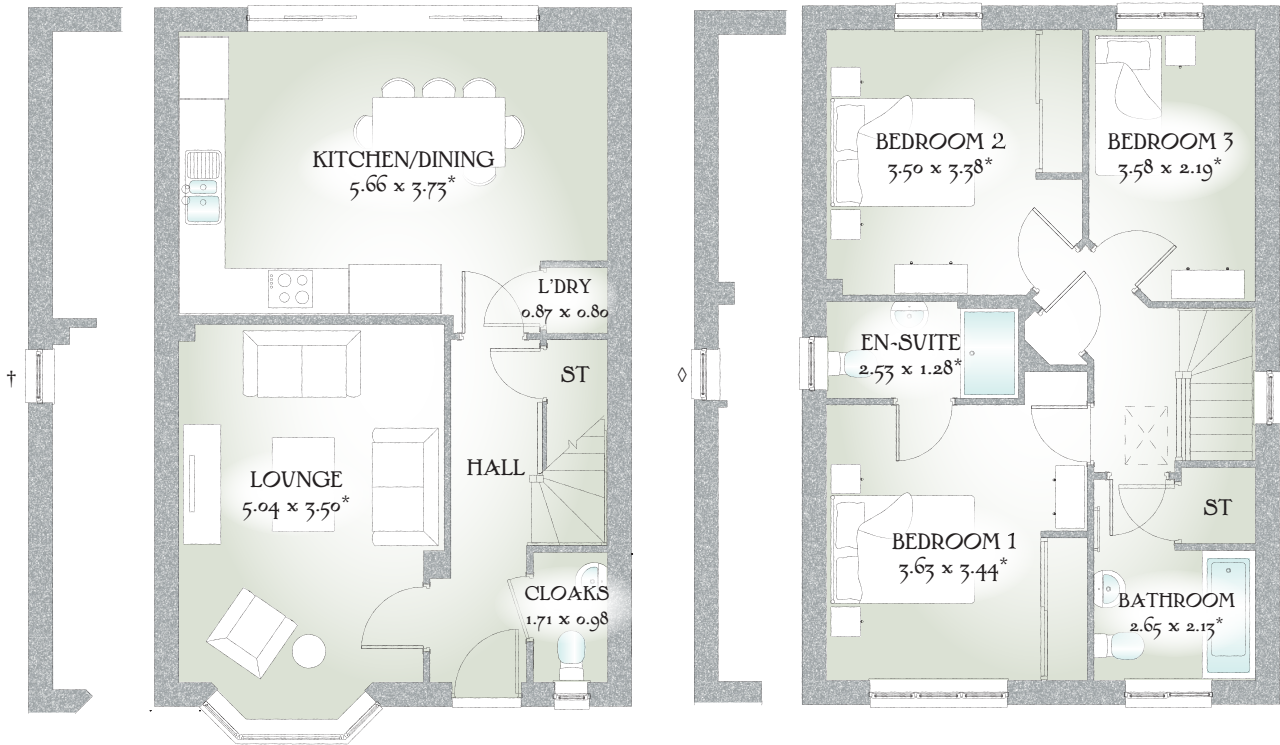
 REDROW



Cusworth

THREE BEDROOM HOME





THREE BEDROOM HOME

Simplicity and chic living is embedded within the Cusworth. The quality, craftsmanship and extra touches this house provides makes it a home. The first floor provides well proportioned rooms, with the master bedroom being enhanced with a superb en-suite.

GROUND FLOOR

Lounge	16'6" x 11'6"	5.04 x 3.50 m*
Kitchen/ Dining	18'7" x 12'3"	5.66 x 3.73 m*
Cloaks	5'7" x 3'3"	1.71 x 0.98 m
Laundry	2'10" x 2'7"	0.87 x 0.80 m

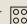

FIRST FLOOR

Bedroom 1	11'11" x 11'3"	3.63 x 3.44 m*
En-suite	8'4" x 4'2"	2.53 x 1.28 m*
Bedroom 2	11'6" x 11'1"	3.50 x 3.38 m*
Bedroom 3	11'9" x 7'2"	3.58 x 2.19 m*
Bathroom	8'8" x 7'0"	2.65 x 2.13 m*

CONSUMER CODE FOR HOME BUILDERS

www.consumercode.co.uk

Customers should note this illustration is an example of the Cusworth house type. All dimensions indicated are approximate and furniture layout is for illustrative purposes only. Homes may be 'handed' (mirror image) versions of the illustrations, and may be detached, semi-detached or terraced. Materials used may differ from plot to plot including render and roof tile colours. Detailed plans and specifications are available for inspection for each plot at our Sales Centre during working hours and customers must check their individual specifications prior to making a reservation.

KEY  Hob  ST Cupboard

* Max dimensions Note: Bedroom dimensions taken into wardrobe recess. All wardrobes are subject to site specification. Please see Sales Consultant for further details.

† Additional window to selected plots

◇ Please see Sales Consultant for more information

Traditional homes, built the way you remember

 **REDROW**
A BETTER WAY TO LIVE