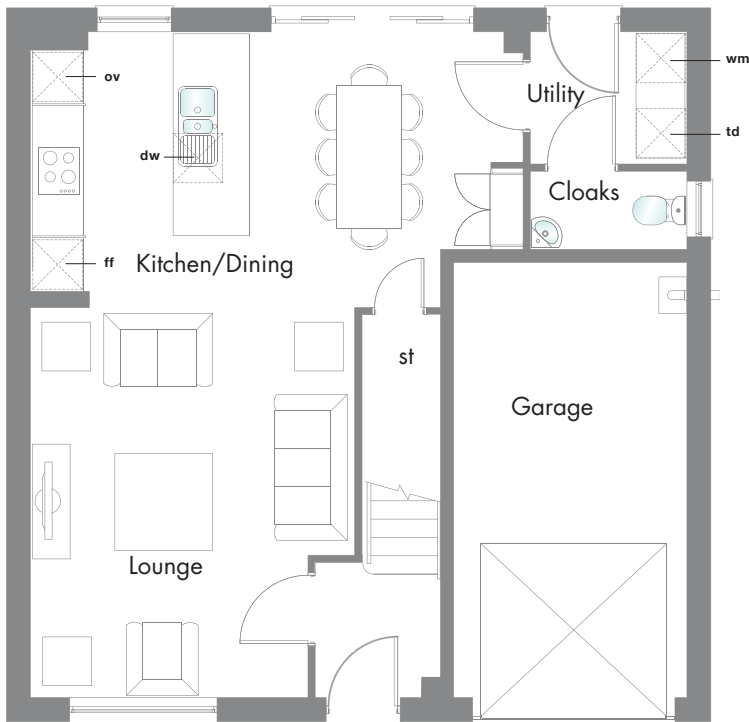


1246 SQ FT

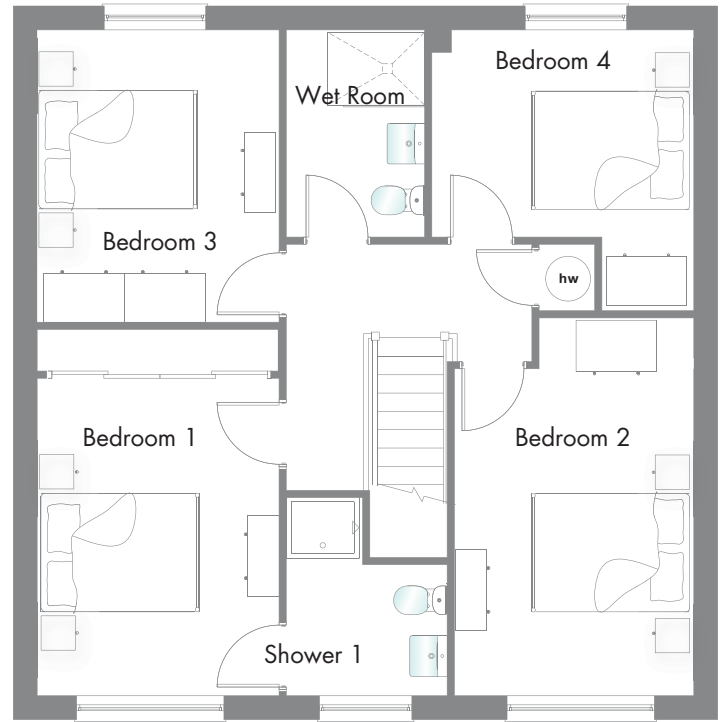
4 BEDROOM HOME

The real success of the Abode 1246 is the sheer amount of space available. We've taken away the walls downstairs to open up the space for you to enjoy.

GROUND FLOOR



FIRST FLOOR



G

Lounge	15'8" x 13'0"	4.77 x 3.96 m*
Kitchen/ Dining	19'9" x 11'0"	6.03 x 3.36 m*
Cloaks	6'3" x 3'2"	1.90 x 0.96 m
Utility	6'3" x 5'3"	1.90 x 1.60 m
Garage	18'4" x 9'5"	5.60 x 2.87 m*

F

Bedroom 1	14'8" x 9'8"	4.46 x 2.95 m*
Shower 1	7'11" x 6'6"	2.41 x 1.98 m*
Bedroom 2	15'0" x 9'7"	4.58 x 2.92 m*
Bedroom 3	11'9" x 9'8"	3.58 x 2.95 m
Bedroom 4	11'4" x 10'6"	3.46 x 3.19 m*
Wet Room	8'3" x 5'7"	2.52 x 1.70 m

Hob Oven Fridge/Freezer Washing machine space Dishwasher space Optional wardrobe Tumble dryer space Hot Water Cylinder
*Max dimensions Note: Bedroom dimensions taken into wardrobe recess

Customers should note this illustration is an example of The Abode 1246 house type. All dimensions indicated are approximate and the furniture layout is for illustrative purposes only. Homes may be 'handed' (mirror image) versions of the illustrations, and may be detached, semi-detached or terraced. Materials used may differ from plot to plot including render and roof tile colours. Detailed plans and specifications are available for inspection for each plot at our Marketing Suite during working hours and customers must check their individual specifications prior to making a reservation. ** All wardrobes are subject to site specification. Please see Sales Consultant for further details.
Redrow.co.uk give notice that the property particulars and related information on this site, whilst believed to be accurate, are set as a general outline for guidance only. Intending purchasers should not rely on them as statements or representations of fact, but must satisfy themselves before physical inspection as to their availability, or by physical inspection of the property in question or otherwise as to their accuracy or fit for purpose. Consequently, no information displayed on this site (or linked sites) constitutes or forms part of a contract. Materials used may differ from plot to plot including render and roof tile colours.