

698



Visit: [redrow.co.uk/abode](http://redrow.co.uk/abode)



698



Visit: [redrow.co.uk/abode](http://redrow.co.uk/abode)

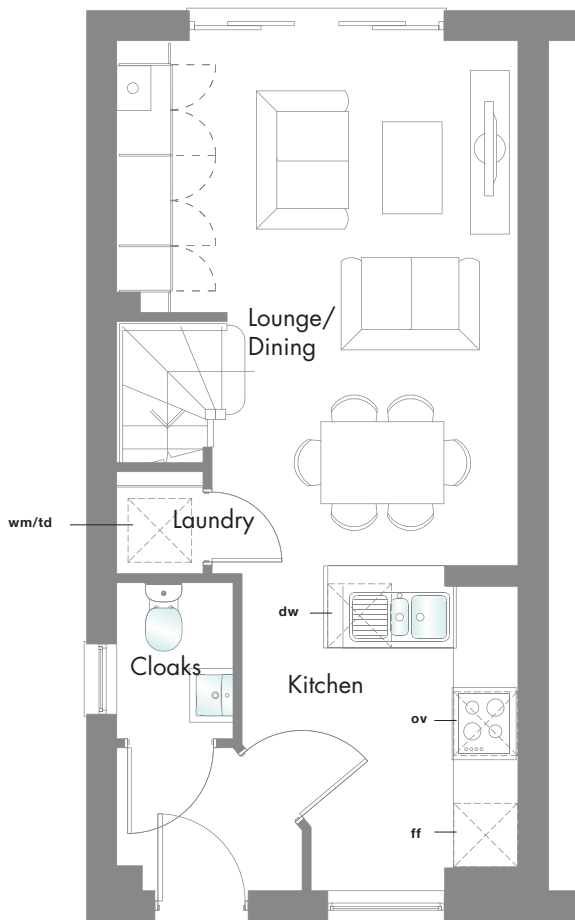


# 698<sup>SQ FT</sup>

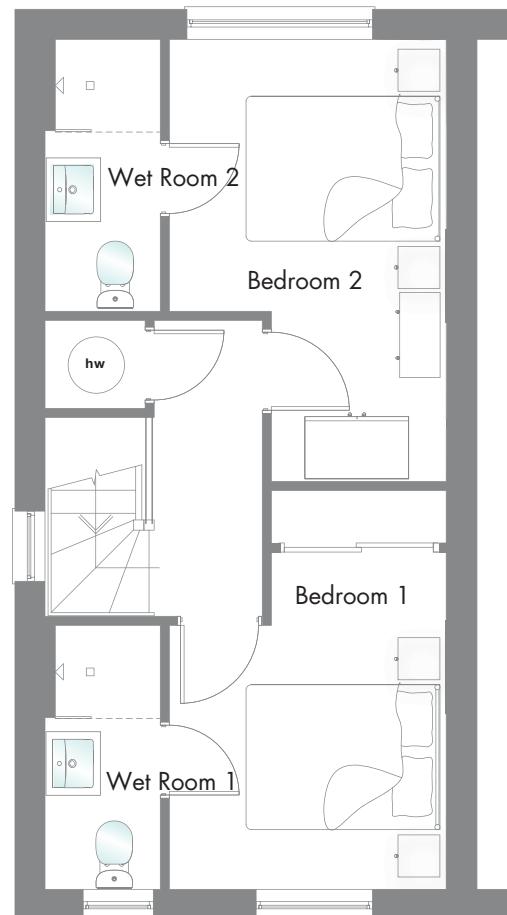
## 2 BEDROOM HOME

We've reinvented the traditional two-up two-down terraced home to create so much more space for you to live and to grow.

### GROUND FLOOR



### FIRST FLOOR



<b>G</b>	Lounge/ Dining	16'6" x 12'8"	5.40 x 3.86 m*
	Kitchen	10'1" x 8'9"	3.07 x 2.67 m*
	Cloaks	5'0" x 3'8"	1.52 x 1.11 m
	Laundry	2'9" x 2'8"	0.85 x 0.82 m

<b>F</b>	Bedroom 1	12'8" x 8'10"	3.87 x 2.68 m*
	Wet Room 1	8'4" x 3'7"	2.55 x 1.10m
	Bedroom 2	14'1" x 8'10"	4.29 x 2.68 m*
	Wet Room 2	8'8" x 3'7"	2.63 x 1.10 m

Hob Oven Fridge/Freezer Washing machine/Tumble dryer  
 Dishwasher space Optional wardrobe Hot Water Cylinder  
 \*Max dimensions Note: Bedroom dimensions taken into wardrobe recess

Customers should note this illustration is an example of The Abode 698 mid housetype. All dimensions indicated are approximate and furniture layout is for illustrative purposes only. Homes may be a "handed" (mirror image) versions of the illustrations, and may be detached, semi-detached or terraced. Materials used may differ from plot to plot including render and roof tile colours. Detailed plans and specifications are available for inspection for each plot at our Marketing Suite during working hours and customers must check their individual specifications prior to making reservation.