

APARTMENT SPECIFICATIONS

Interior Features

Walls Dulux White emulsion paint finish.

Internal Doors

'Cambridge' internal door finished in satin white paint.

Internal Door Furniture Polished chrome effect door furniture.

Architrave 'V groove' profile MDF, satin white paint finish.

Skirting boards 'V groove' profile MDF, satin white paint finish.

Ceilings Flat skim finish with Dulux White emulsion paint decoration.

Central Heating

Full gas central heating with energy efficient wall mounted combi boiler to be fitted. Compensator programmer to be installed in order to increase the operating efficiency of the heating system.

Radiators Myson round top radiators.

Phone Point GET fittings, finish to match electrical accessories in room (NB first point will be std BT box). Positions as indicated on drawings.

TV Point GET fittings, finish to match electrical accessories in room. Communal television aerial and satellite provision. Virgin Media installation to lounge & bedroom 1. Positions as indicated on drawings.

Electrical Sockets / Switch Plates

GET ultimate low profile white electrical switch and socket plates. Numbers of single socket outlets as indicated on drawing.

Smoke Detectors Mains operated with battery back-up.

Consumer Unit Split load RCD consumer unit by BG to be surface mounted. Please refer to drawing for location.

Lighting Low energy pendant lighting. Three spot track light to kitchen and underlighting to units where possible.

Flooring Goliath sheet vinyl floor finish to working kitchen area.

Ventilation Mechanical extract ventilation fans to be installed all as indicated on house plans.

Kitchen & Utility Features

Kitchen Styles A range of quality kitchen styles available. Please see Sales Consultant for further details.

Work Surfaces 40mm post formed worktops with mitred joints.

Sink

Kitchen Stainless steel 1½ bowl sink, with 'Monza' chrome mixer tap.

Splashback 100mm upstand to match worktop together with stainless steel splashback to hob.

Appliances

Stainless steel gas hob.
Single oven.
Stainless steel chimney style hood.
Integrated fridge/freezer.
Free standing washer/dryer.
See Sales Consultant for further details.

Bathroom Features

Bathroom Styles Ideal Standard in white finish.

Bath Tempo Arc Bath 700 wide by 1700 long with pop up style waste.

Shower over Bath (if applicable)

Valve Thermostatic bar valve with 9 litre per minute flow limiter.
Shower Screen to Enclosure Glass bath screen.

Sanitaryware

Bathroom Basin 50cm Sphere basin with semi pedestal & pivot style waste.
WC Concept close coupled back-to-wall pan with Arc dual flush cistern.

Brassware

Basin Ideal Standard Tempo monoblock tap with single lever control complete with click plug waste.
Bath Ideal Standard Tempo single lever bath filler complete with pop up waste.

Accessories

Towel Warmer Ferrolti towel warmer to bathroom.

Flooring Goliath sheet vinyl floor finish.

Wall Tiles Tiles to be from a choice from our Porcelanosa range.

Shaver Socket One socket per house located in the bathroom.

Exterior Features

Fascia & Soffit PVC-u fascia and vented soffit board in white.

Rainwater System

The rainwater gutters and downpipes finish to be black.

Windows Sealed double glazed PVC-u windows in white finish. Please refer to the development finishing schedule.

Security Key operated audio door entry system with telephone handset with push button mechanism release.

Gardens Good standard turf and shrubs, refer to layout for landscaping details.

Paving Concrete flags as indicated on drawing.

Driveway Tarmac parking court, as indicated on drawing.



Traditional homes, built the way you remember

 **REDROW**
A BETTER WAY TO LIVE

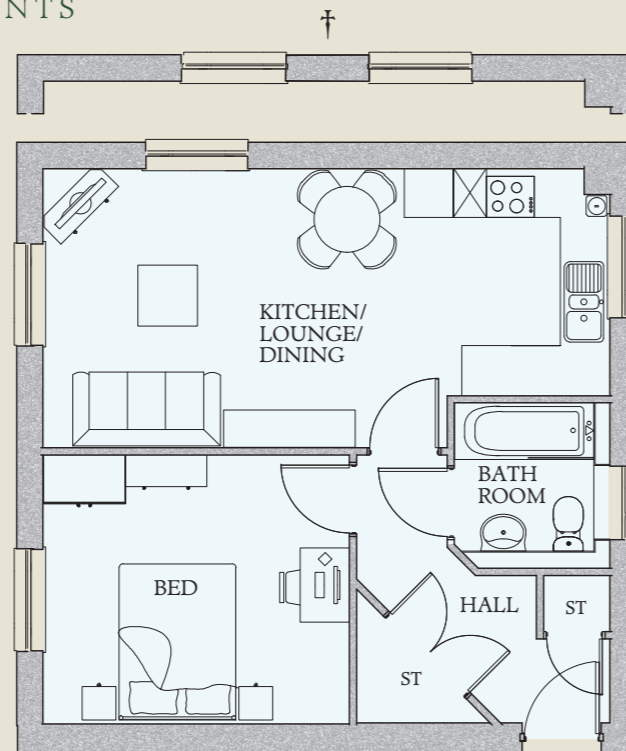
Park View

APARTMENT L

ONE & TWO BEDROOM APARTMENTS

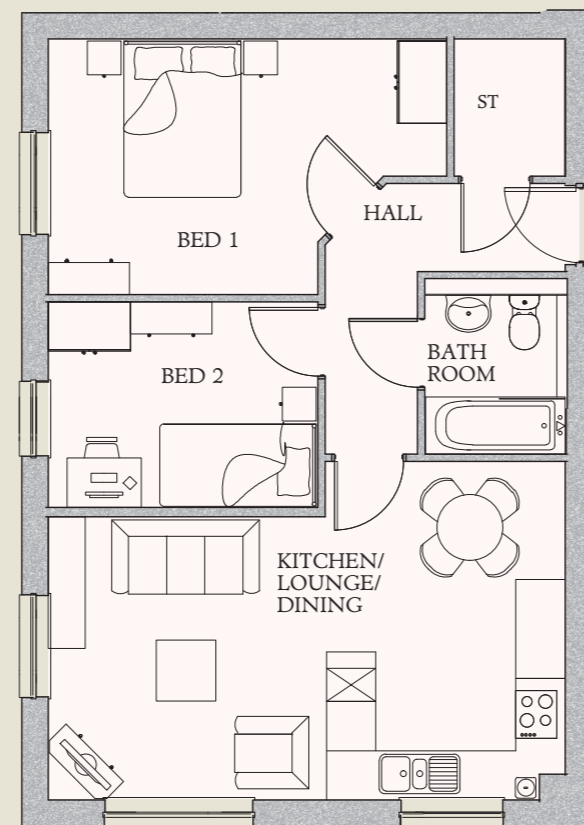
APARTMENT TYPE A 104, 107 & 110

Kitchen/ Lounge/ Dining	22'7" x 11'2"	6.89 x 3.39 m
Bedroom	12'3" x 10'8"	3.73 x 3.26 m
Bathroom	6'7" x 6'2"	2.01 x 1.89 m*



APARTMENT TYPE B 103, 106, 109 & 112

Kitchen/ Lounge/ Dining	20'7" x 13'6"	6.29 x 4.12 m*
Bedroom 1	15'11" x 10'2"	4.85 x 3.11 m*
Bedroom 2	10'9" x 8'2"	3.28 x 2.50 m
Bathroom	7'0" x 5'7"	2.13 x 1.71 m*



KEY

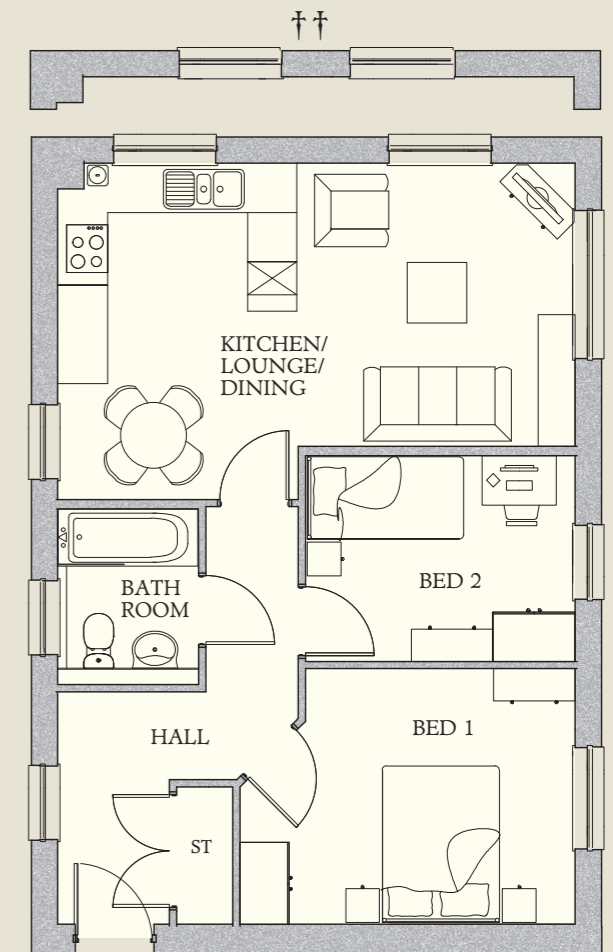
Hob

* Max dimensions Note: Bedroom dimensions taken into wardrobe recess † Window position to plot 110 †† Window position to plot 111

Customers should note this illustration is an example of the house type. Please refer to your sales consultant for details of any elevational differences. All dimensions indicated are approximate. The specifications will vary from site to site and plot to plot. Detailed plans and specifications are available for inspection for each plot at our Sales Centre during working hours and customers must check their individual specifications prior to making a reservation. Please note, steel frame house types will benefit from a slight increase to some room sizes.

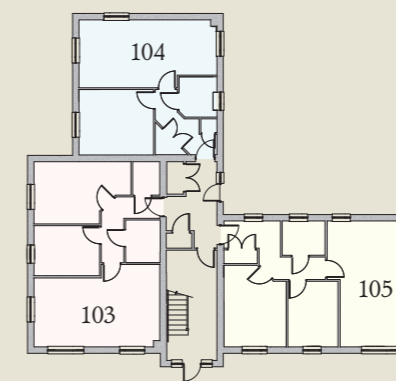
APARTMENT TYPE C 105, 108 & 111

Kitchen/ Lounge/ Dining	20'8" x 13'5"	6.30 x 4.09 m*
Bedroom 1	13'5" x 10'2"	4.08 x 3.11 m*
Bedroom 2	10'9" x 8'2"	3.28 x 2.50 m
Bathroom	7'0" x 5'8"	2.13 x 1.72 m*

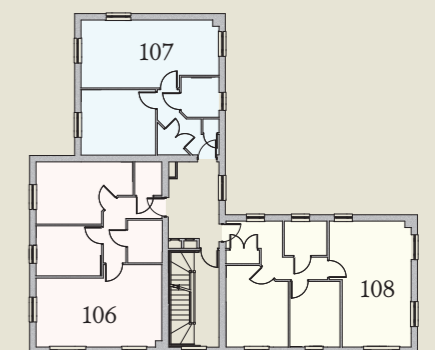


APARTMENT LOCATIONS

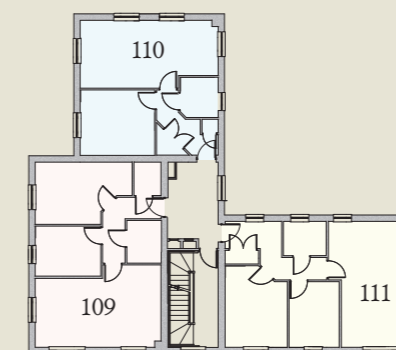
GROUND FLOOR



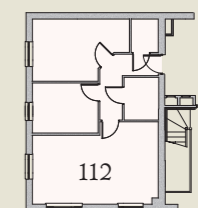
FIRST FLOOR



SECOND FLOOR



THIRD FLOOR



Traditional homes, built the way you remember

REDROW
A BETTER WAY TO LIVE