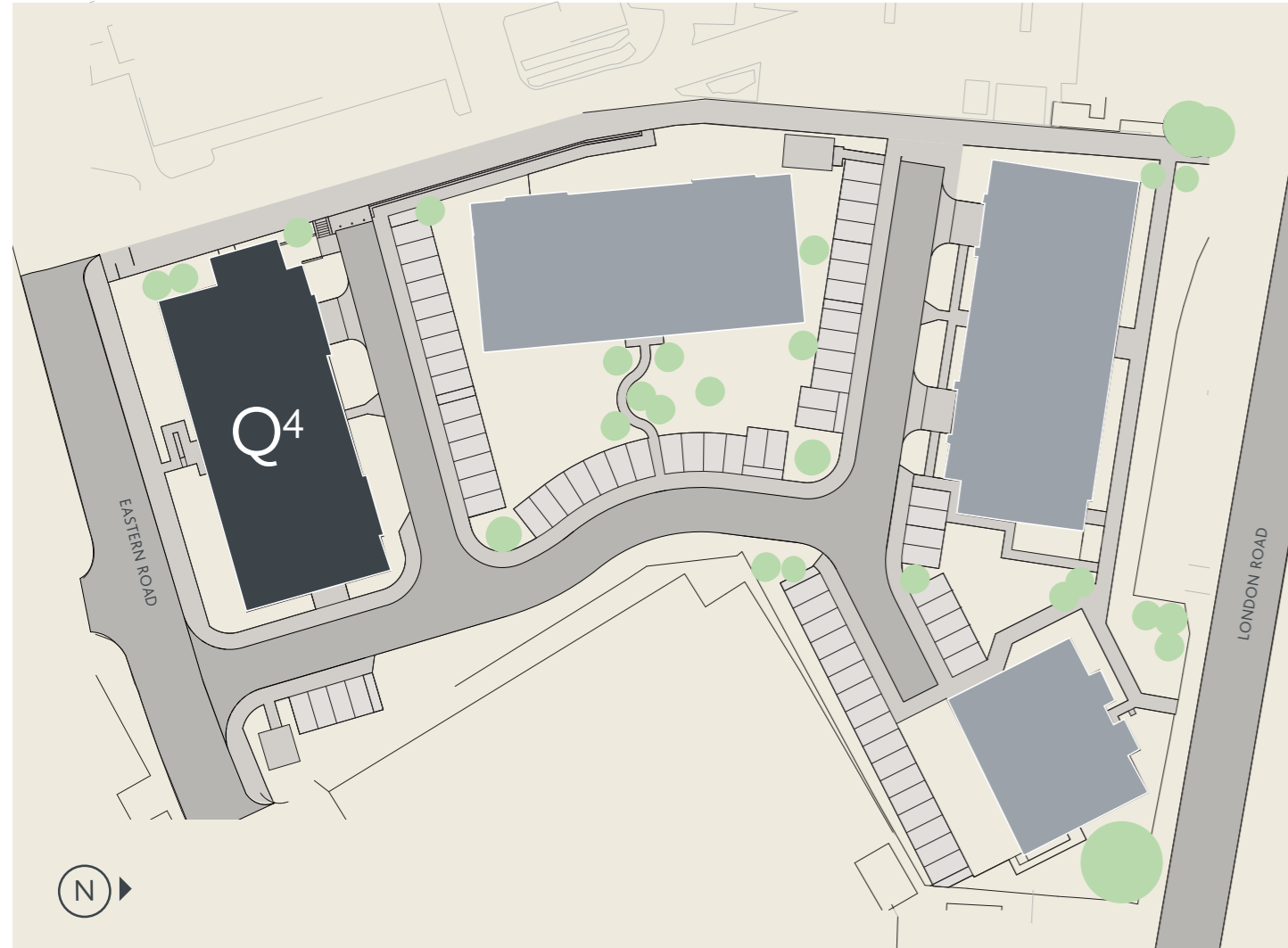


THE QUARTERS | Q4

BRACKNELL



The Quarters is a thoroughly modern design with a sense of community, in a desirable location. The apartments in this development offers the ideal balance between urban and countryside living.

The interiors of the apartments themselves are sleek and innovative, featuring design details to maximise space and natural light - and only the finest materials have been used throughout.

All apartments feature an airy open-plan living room, dining area and kitchen. Two bedroom apartments offer an ensuite to the master bedroom alongside a separate bathroom. Many of the apartments also have private balcony areas, which can be reached from the main living space.

WWW.REDROW.CO.UK



The Quarters
The Quarters, Eastern Road, Bracknell, Berkshire, RG12 2UP
Telephone: 01344 531 269

Q4

THE QUARTERS

BRACKNELL



FIRST FLOOR



SECOND & THIRD FLOOR



FIRST FLOOR

ALPHA PLOTS 1 & 5

Kitchen / Dining / Living	17'0" x 16'7"	5.19 x 5.05 m*
Bedroom 1	12'10" x 12'6"	3.90 x 3.80 m*
EnSuite	6'5" x 5'7"	1.95 x 1.70 m*
Bedroom 2	16'7" x 8'6"	5.05 x 2.58 m*
Bathroom	6'11" x 6'5"	2.10 x 1.95 m*

BETA PLOTS 2 & 4

Kitchen / Dining / Living	26'11" x 9'11"	8.20 x 3.00 m*
Bedroom 1	14'8" x 10'2"	4.46 x 3.10 m*
Bathroom	7'7" x 6'5"	2.30 x 1.95 m*

GAMMA PLOT 3

Kitchen / Dining / Living	25'9" x 11'1"	7.86 x 3.37 m*
Bedroom 1	12'0" x 11'0"	3.66 x 3.35 m*
EnSuite	6'11" x 4'5"	2.11 x 1.35 m*
Bedroom 2	12'0" x 8'6"	3.66 x 2.58 m*
Bathroom	6'11" x 6'4"	2.11 x 1.95 m*

DELTA PLOTS 6 & 9

Kitchen / Dining / Living	18'11" x 15'3"	5.76 x 4.66 m*
Bedroom 1	13'5" x 11'2"	4.08 x 3.40 m*
EnSuite	7'5" x 4'8"	2.25 x 1.42 m*
Bedroom 2	15'2" x 8'6"	4.62 x 2.60 m*
Bathroom	7'5" x 6'5"	2.25 x 1.95 m*

ZETA PLOTS 7 & 8

Kitchen / Dining / Living	21'8" x 11'9"	6.60 x 3.58 m*
Bedroom 1	18'3" x 12'8"	5.55 x 3.86 m*
EnSuite	7'2" x 4'9"	2.19 x 1.44 m*
Bedroom 2	12'11" x 9'4"	3.94 x 2.85 m*
Bathroom	7'2" x 6'5"	2.19 x 1.95 m*

SECOND & THIRD FLOOR

ALPHA PLOTS 10, 14, 19 & 23

Kitchen / Dining / Living	17'0" x 16'7"	5.19 x 5.05 m*
Bedroom 1	12'10" x 12'6"	3.90 x 3.80 m*
EnSuite	6'5" x 5'7"	1.95 x 1.70 m*
Bedroom 2	16'7" x 8'6"	5.05 x 2.58 m*
Bathroom	6'11" x 6'5"	2.10 x 1.95 m*

DELTA PLOTS 15, 18, 24 & 27

Kitchen / Dining / Living	18'11" x 15'3"	5.76 x 4.66 m*
Bedroom 1	13'5" x 11'2"	4.08 x 3.40 m*
EnSuite	7'5" x 4'8"	2.25 x 1.42 m*
Bedroom 2	15'2" x 8'6"	4.62 x 2.60 m*
Bathroom	7'5" x 6'5"	2.25 x 1.95 m*

BETA PLOTS 11, 13, 20 & 22

Kitchen / Dining / Living	26'11" x 9'11"	8.20 x 3.00 m*
Bedroom 1	14'8" x 10'2"	4.46 x 3.10 m*
Bathroom	7'7" x 6'5"	2.30 x 1.95 m*

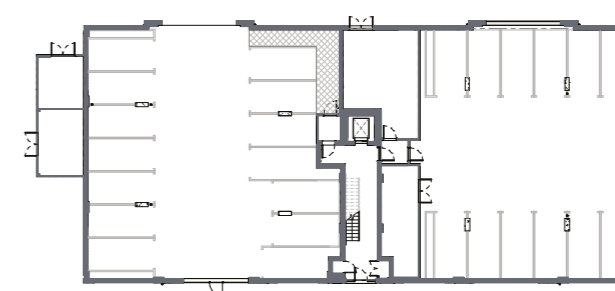
EPSILON PLOTS 16, 17, 25 & 26

Kitchen / Dining / Living	21'9" x 11'9"	6.64 x 3.58 m*
Bedroom 1	18'3" x 12'8"	5.55 x 3.86 m*
EnSuite	7'2" x 4'9"	2.19 x 1.44 m*
Bedroom 2	13'1" x 9'4"	3.98 x 2.85 m*
Bathroom	7'3" x 6'5"	2.20 x 1.95 m*

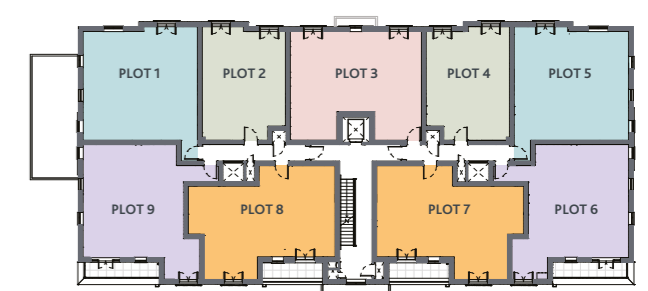
GAMMA PLOTS 12 & 21

Kitchen / Dining / Living	25'9" x 11'1"	7.86 x 3.37 m*
Bedroom 1	12'0" x 11'0"	3.66 x 3.35 m*
EnSuite	6'11" x 4'5"	2.11 x 1.35 m*
Bedroom 2	12'0" x 8'6"	3.66 x 2.58 m*
Bathroom	6'11" x 6'4"	2.11 x 1.95 m*

GROUND FLOOR



FIRST FLOOR



SECOND FLOOR



THIRD FLOOR

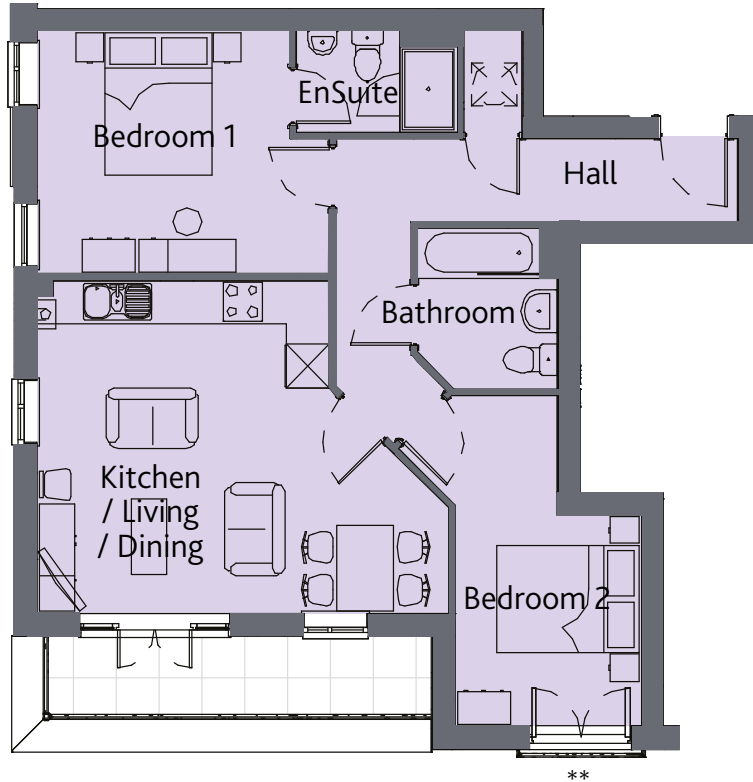


KEY Electric hob *Max dimensions Note: Bedroom dimensions taken into wardrobe recess ** French windows to plots 10, 11, 13, 14, 15, 16, 17 & 18.

Customers should note this illustration is an example of the apartment type. Please refer to your sales consultant for details of any elevational differences. All dimensions indicated are approximate. The specifications will vary from site to site and plot to plot. Detailed plans and specifications are available for inspection for each plot at our Marketing Suite during working hours and customers must check their individual specifications prior to making a reservation. Please note, steel frame apartment types will benefit from a slight increase to some room sizes.


THE QUARTERS | Q⁴

BRACKNELL



DELTA PLOTS 6, 9, 15, 18, 24 & 27

Kitchen / Dining / Living	18'11" x 15'3"	5.76 x 4.66 m*
Bedroom 1	13'5" x 11'2"	4.08 x 3.40 m*
EnSuite	7'5" x 4'8"	2.25 x 1.42 m*
Bedroom 2	15'2" x 8'6"	4.62 x 2.60 m*
Bathroom	7'5" x 6'5"	2.25 x 1.95 m*

KEY  Electric hob *Max dimensions ** French windows to plots 6, 9, 15 & 18 Note: Bedroom dimensions taken into wardrobe recess

Customers should note this illustration is an example of the apartment type. Please refer to your sales consultant for details of any elevational differences. All dimensions indicated are approximate. The specifications will vary from site to site and plot to plot. Detailed plans and specifications are available for inspection for each plot at our Marketing Suite during working hours and customers must check their individual specifications prior to making a reservation. Please note, steel frame apartment types will benefit from a slight increase to some room sizes.