



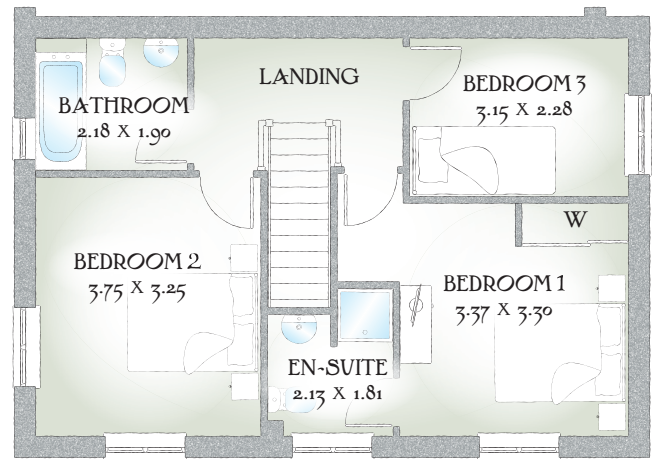
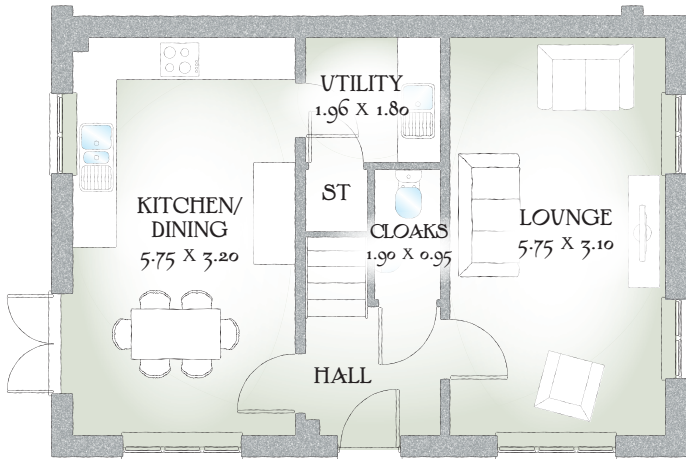
Baslow

THREE BEDROOM HOME



 REDROW

Baslow



THREE BEDROOM HOME

This stunning home not only looks great but offers the homeowner a traditional layout with a light and spacious feel.

GROUND FLOOR

Lounge	18'10" x 10'2"	5.75 x 3.10m
Kitchen/ Dining Area	18'10" x 10'6"	5.75 x 3.20m
Utility	6'5" x 5'10"	1.96 x 1.80m
Cloaks	6'2" x 3'1"	1.90 x 0.95m

FIRST FLOOR

Bedroom 1	11'0" x 10'9"	3.37 x 3.30m
En-suite	6'11" x 5'11"	2.13 x 1.81m
Bedroom 2	12'3" x 10'8"	3.75 x 3.25m
Bedroom 3	10'4" x 7'5"	3.15 x 2.28m
Bathroom	7'1" x 6'2"	2.18 x 1.90m

Customers should note this illustration is an example of The Baslow house type. All dimensions indicated are approximate and the furniture layout is for illustrative purposes only. Homes may be 'handed' (mirror image) versions of the illustrations, and may be detached, semi-detached or terraced. Materials used may differ from plot to plot including render and roof tile colours. Detailed plans and specifications are available for inspection for each plot at our Sales Centre during working hours and customers must check their individual specifications prior to making a reservation.

KEY Hob ST Cupboard W Wardrobe

*Max dimensions Note: Bedroom dimensions taken into wardrobe recess. All wardrobes are subject to site specification. Please see Sales Consultant for further details.

Traditional homes, built the way you remember

 **REDROW**
A BETTER WAY TO LIVE