

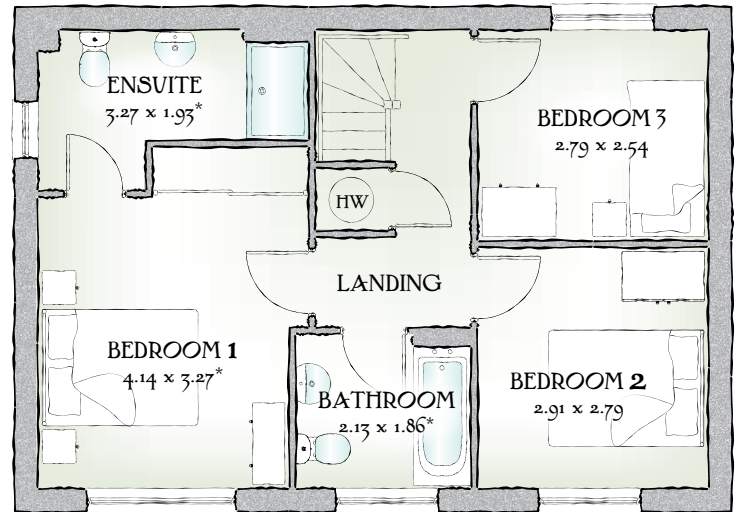
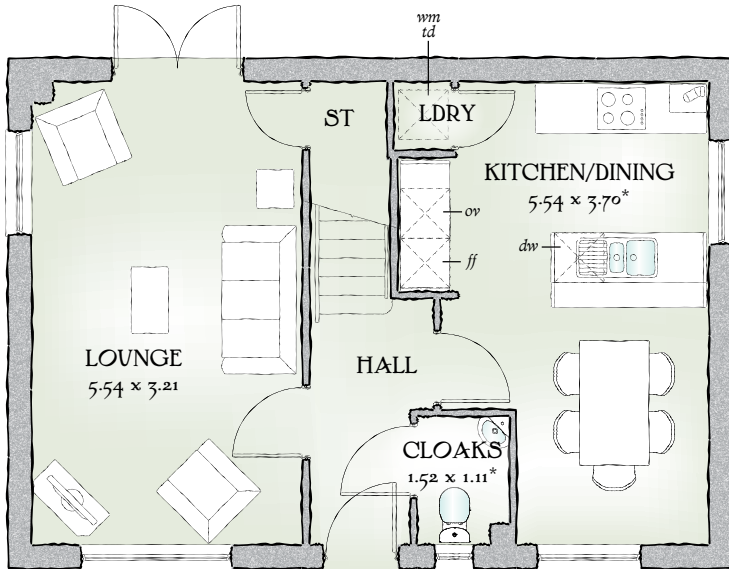


# Brecon

THREE BEDROOM HOME



 REDROW



985 SQ FT | THREE BEDROOM HOME

A home of real character and charm, The Brecon creates the perfect blend between the practical and the peaceful, the yin and the yang of daily life, to create a sense of true harmony.

## GROUND FLOOR

Lounge	18'2" x 10'6"	5.54 x 3.21 m
Kitchen/ Dining	18'2" x 12'2"	5.54 x 3.70 m*
Cloaks	5'0" x 3'8"	1.52 x 1.11 m*
Laundry	2'6" x 2'3"	0.77 x 0.69 m


## FIRST FLOOR

Bedroom 1	13'7" x 10'9"	4.14 x 3.27 m*
EnSuite	10'9" x 6'3"	3.27 x 1.93 m*
Bedroom 2	9'7" x 9'2"	2.91 x 2.79 m
Bedroom 3	9'2" x 8'4"	2.79 x 2.54 m
Bathroom	7'0" x 6'1"	2.13 x 1.86 m*

Customers should note this illustration is an example of The Brecon housetype. All dimensions indicated are approximate and furniture layout is for illustrative purposes only. Homes may be a 'handed' (mirror image) versions of the illustrations, and may be detached, semi-detached or terraced. Materials used may differ from plot to plot including render and roof tile colours. Detailed plans and specifications are available for inspection for each plot at our Marketing Suite during working hours and customers must check their individual specifications prior to making reservation.

\*\* All wardrobes are subject to site specification. Please see Sales Consultant for further details.

Redrow.co.uk give notice that the property particulars and related information on this site, whilst believed to be accurate, are set as a general outline for guidance only. Intending purchasers should not rely on them as statements or representations of fact, but must satisfy themselves before physical inspection as to their availability, or by physical inspection of the property in question or otherwise as to their accuracy or fit for purpose. Consequently, no information displayed on this site (or linked sites) constitutes or forms part of a contract. Materials used may differ from plot to plot including render and roof tile colours.

KEY  Hob *ov* Oven *ff* Fridge/freezer *wm* Washing machine space *dw* Dishwasher space *op* Optional wardrobe\*\* *td* Tumble dryer space *hw* Hot Water Cylinder

\* Max dimensions Note: Bedroom dimensions taken into wardrobe recess

Traditional homes, built the way you remember