



Cambridge

FOUR BEDROOM HOME



 REDROW



Cambridge

FOUR BEDROOM HOME



 REDROW



Cambridge

FOUR BEDROOM HOME



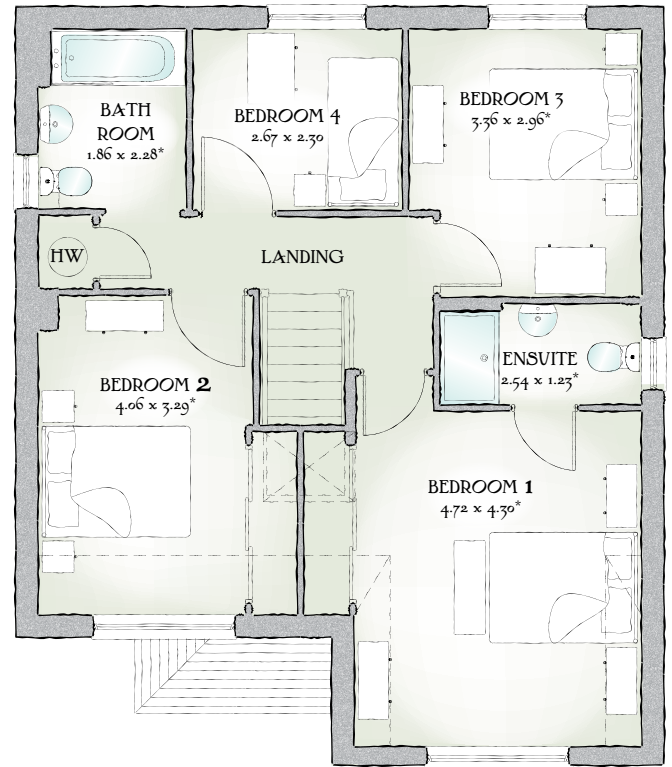
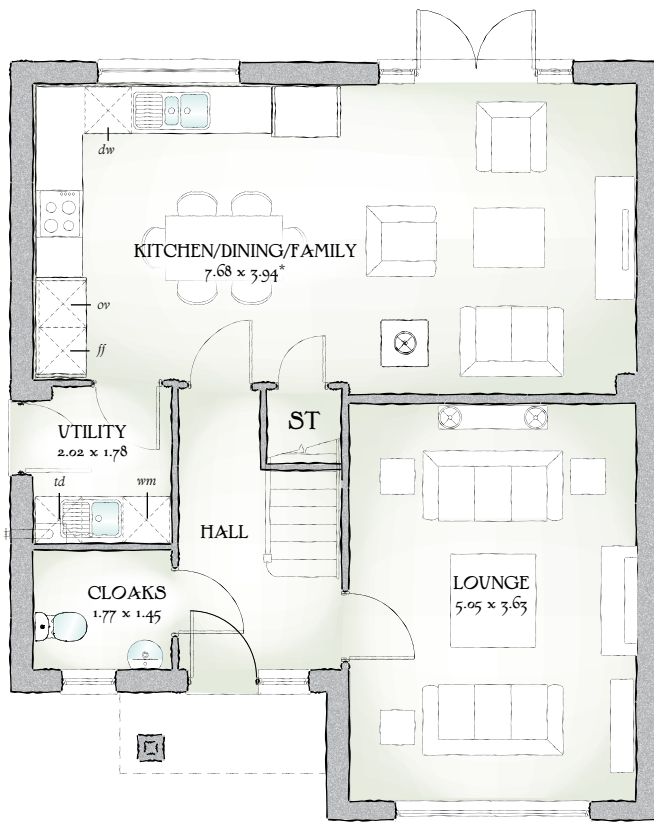
 REDROW



Cambridge

FOUR BEDROOM HOME





1382 SQ FT | FOUR BEDROOM HOME

It's clear from the first glance that The Cambridge has been designed for the dynamics of family life, by an architect who understands the fine balance between time together and personal space.

GROUND FLOOR


Lounge	16'7" x 11'11"	5.05 x 3.63 m
Kitchen/ Dining/ Family	25'2" x 12'11"	7.68 x 3.94 m*
Utility	6'7" x 5'10"	2.02 x 1.78 m
Cloaks	5'9" x 4'9"	1.77 x 1.45 m

FIRST FLOOR

Bedroom 1	15'6" x 14'1"	4.72 x 4.30 m*
EnSuite	8'4" x 4'0"	2.54 x 1.23 m*
Bedroom 2	13'4" x 10'9"	4.06 x 3.29 m*
Bedroom 3	11'0" x 9'8"	3.36 x 2.96 m*
Bedroom 4	8'9" x 7'6"	2.67 x 2.30 m
Bathroom	7'6" x 6'1"	2.28 x 1.86 m*

Customers should note this illustration is an example of The Cambridge housetype. All dimensions indicated are approximate and the furniture layout is for illustrative purposes only. Homes may be a 'handed' (mirror image) versions of the illustrations, and may be detached, semi-detached or terraced. Materials used may differ from plot to plot including render and roof tile colours. Detailed plans and specifications are available for inspection for each plot at our Marketing Suite during working hours and customers must check their individual specifications prior to making a reservation.

Redrow.co.uk give notice that the property particulars and related information on this site, whilst believed to be accurate, are set as a general outline for guidance only. Intending purchasers should not rely on them as statements or representations of fact, but must satisfy themselves before physical inspection as to their availability, or by physical inspection of the property in question or otherwise as to their accuracy or fit for purpose. Consequently, no information displayed on this site (or linked sites) constitutes or forms part of a contract. Materials used may differ from plot to plot including render and roof tile colours.

KEY  Hob *ov* Oven *ff* Fridge/freezer *wm* Washing machine space *dw* Dishwasher space *td* Tumble dryer space *hw* Hot Water Cylinder
* Max dimensions Note: Bedroom dimensions taken into wardrobe recess. All wardrobes are subject to site specification. Please see Sales Consultant for further details.

Traditional homes, built the way you remember



REDROW
OUR PRIDE~YOUR JOY