



# Cambridge

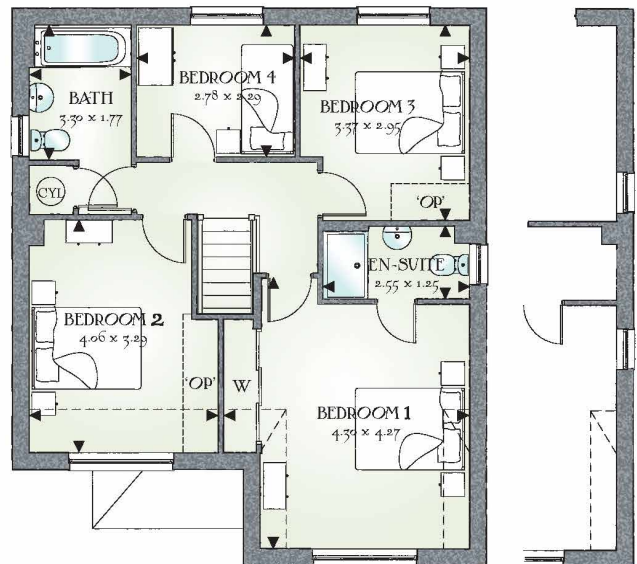
FOUR BEDROOM HOME



 REDROW



# Cambridge



Alternate gable end for plot 203 only

1382 SQ FT | FOUR BEDROOM HOME

It's clear from the first glance that The Cambridge has been designed for the dynamics of family life, by an architect who understands the fine balance between time together and personal space.

## GROUND FLOOR

Kitchen/ Dining/Family	7.68m x 4.04m	25'2" x 13'3"
Lounge	5.05m x 3.65m	16'7" x 12'0"
Utility	1.96m x 1.75m	6'5" x 5'9"
Cloaks	1.75m x 1.28m	5'9" x 4'2"

## FIRST FLOOR

Bedroom 1	4.30m x 4.27m	14'1" x 14'0"
En-suite	2.55m x 1.25m	8'4" x 4'1"
Bedroom 2	4.06m x 3.29m	13'4" x 10'10"
Bedroom 3	3.37m x 2.95m	11'1" x 9'8"
Bedroom 4	2.78m x 2.29m	9'1" x 7'6"
Bathroom	3.30m x 1.77m	10'10" x 5'10"

Customers should note this illustration is an example of The Cambridge housetype. All dimensions indicated are approximate and furniture layout is for illustrative purposes only. Homes may be a 'handed' (mirror image) versions of the illustrations. Materials used may differ from plot to plot including render and roof tile colours. Detailed plans and specifications are available for inspection for each plot at our Marketing Suite during working hours and customers must check their individual specifications prior to making reservation. 'OP' denotes optional.

Traditional homes built the way you remember

