

# THE CROFT

PLOT 13

*The understated elegance of The Croft's brick façade belies its spacious accommodation.*



STRETTON GREEN  
— CHESHIRE —



*Customers please note the illustration and specification will vary from plot to plot, please speak to one of our sales consultants for detailed plans.*

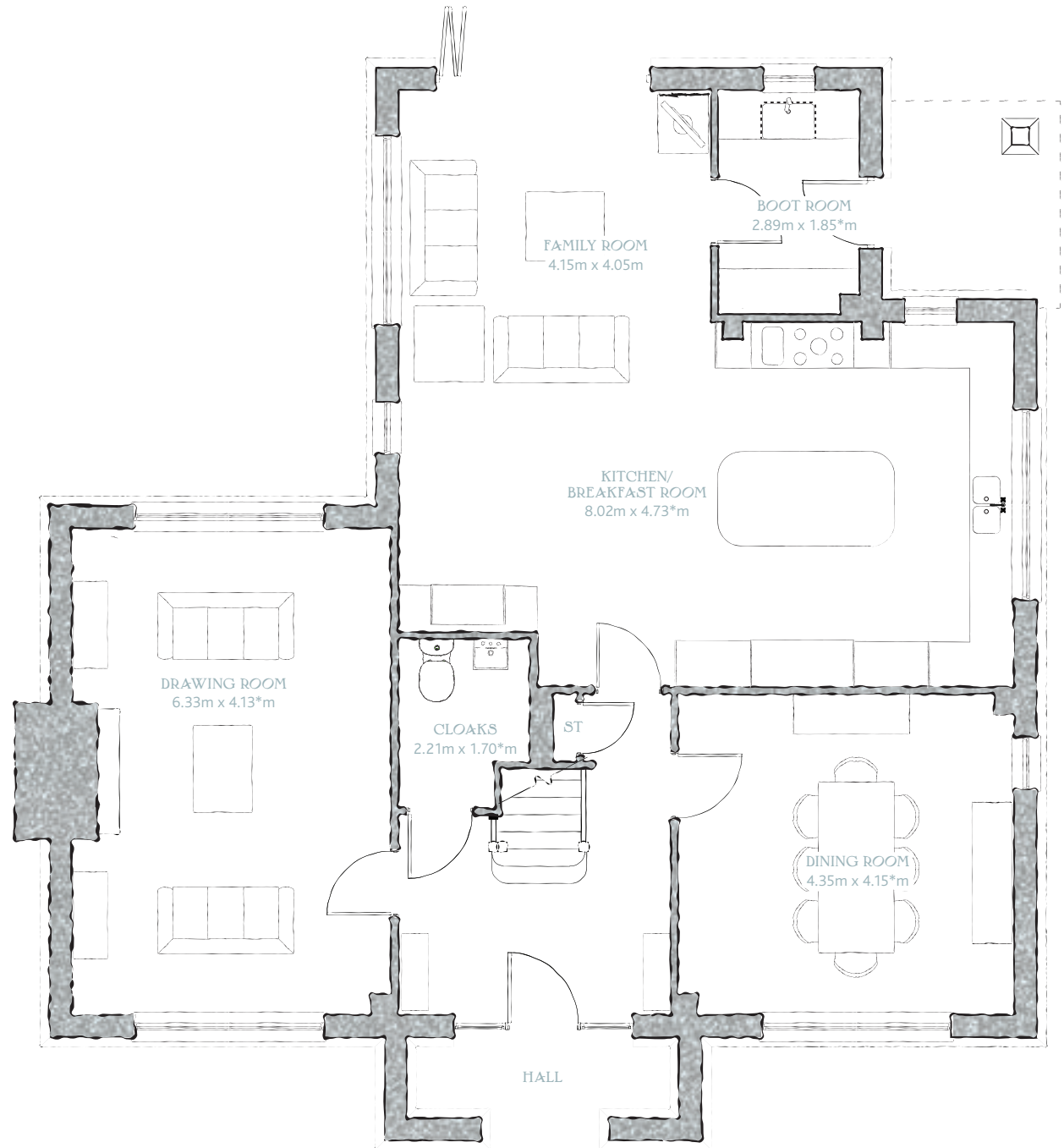
# THE CROFT

## PLOT 13

### GROUND FLOOR

Drawing Room	20'9" x 13'7"*	6.33m x 4.13m*
Dining Room	14'3" x 13'7"*	4.35m x 4.15m*
Family Room	13'7" x 13'3"	4.15m x 4.05m
Kitchen / Breakfast Room	26'4" x 15'6"*	8.02m x 4.73m*
Cloaks	7'3" x 5'7"*	2.21m x 1.70m*
Boot Room	9'6" x 6'11"*	2.89m x 1.85m*

\* Maximum dimension

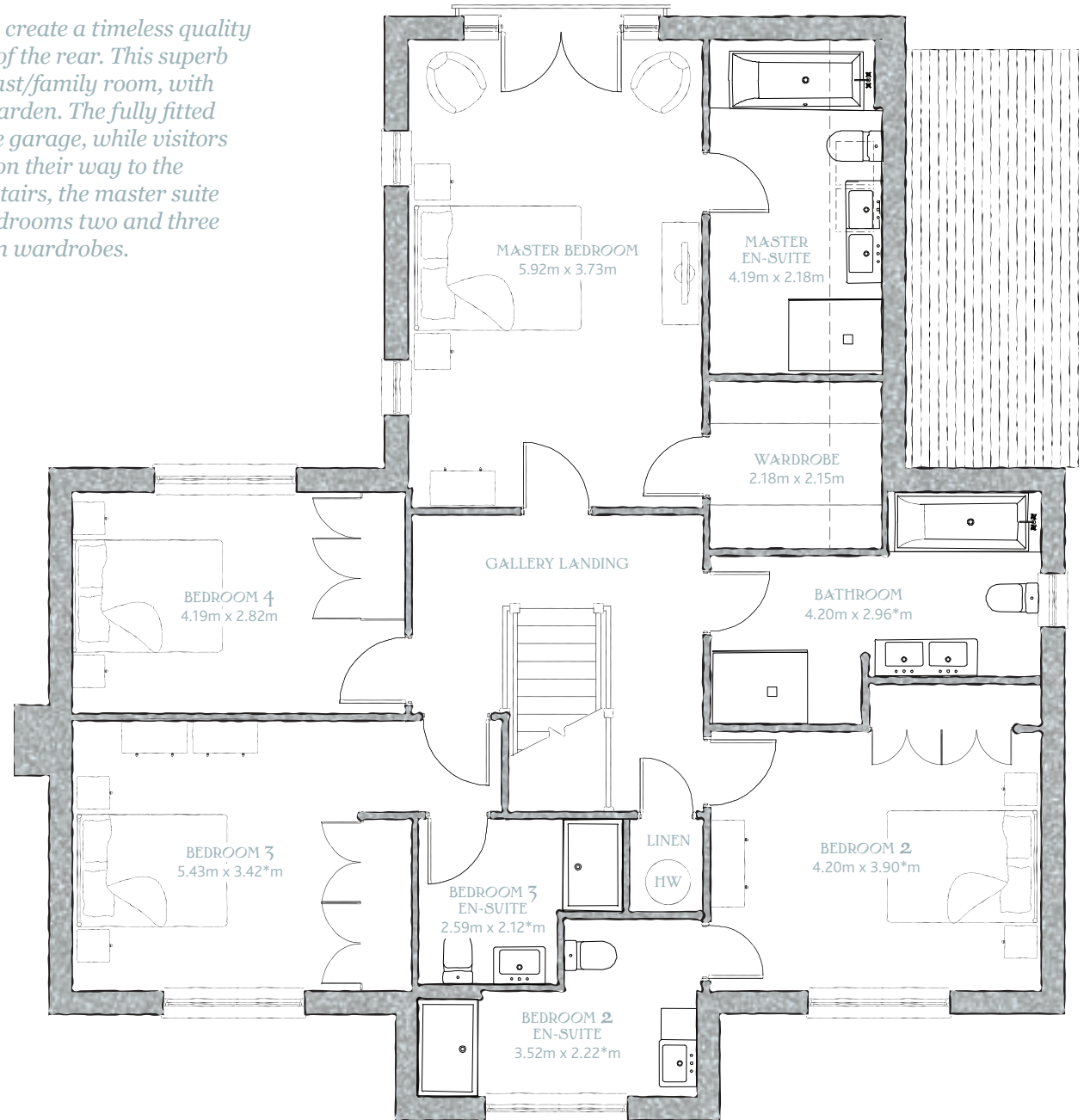


Stone window surrounds, plinth and Tudor-arched porch create a timeless quality aesthetic, while the varying roof levels add to the appeal of the rear. This superb four bedroom house boasts a spectacular kitchen/breakfast/family room, with bi-fold doors opening onto the south-facing terrace and garden. The fully fitted boot room provides protected rear access from the double garage, while visitors cannot fail to be impressed with the welcoming hallway, on their way to the formal dining room or double-aspect drawing room. Upstairs, the master suite has an excellent en-suite and walk-in wardrobe, while bedrooms two and three also have en-suite facilities and all bedrooms have built-in wardrobes.

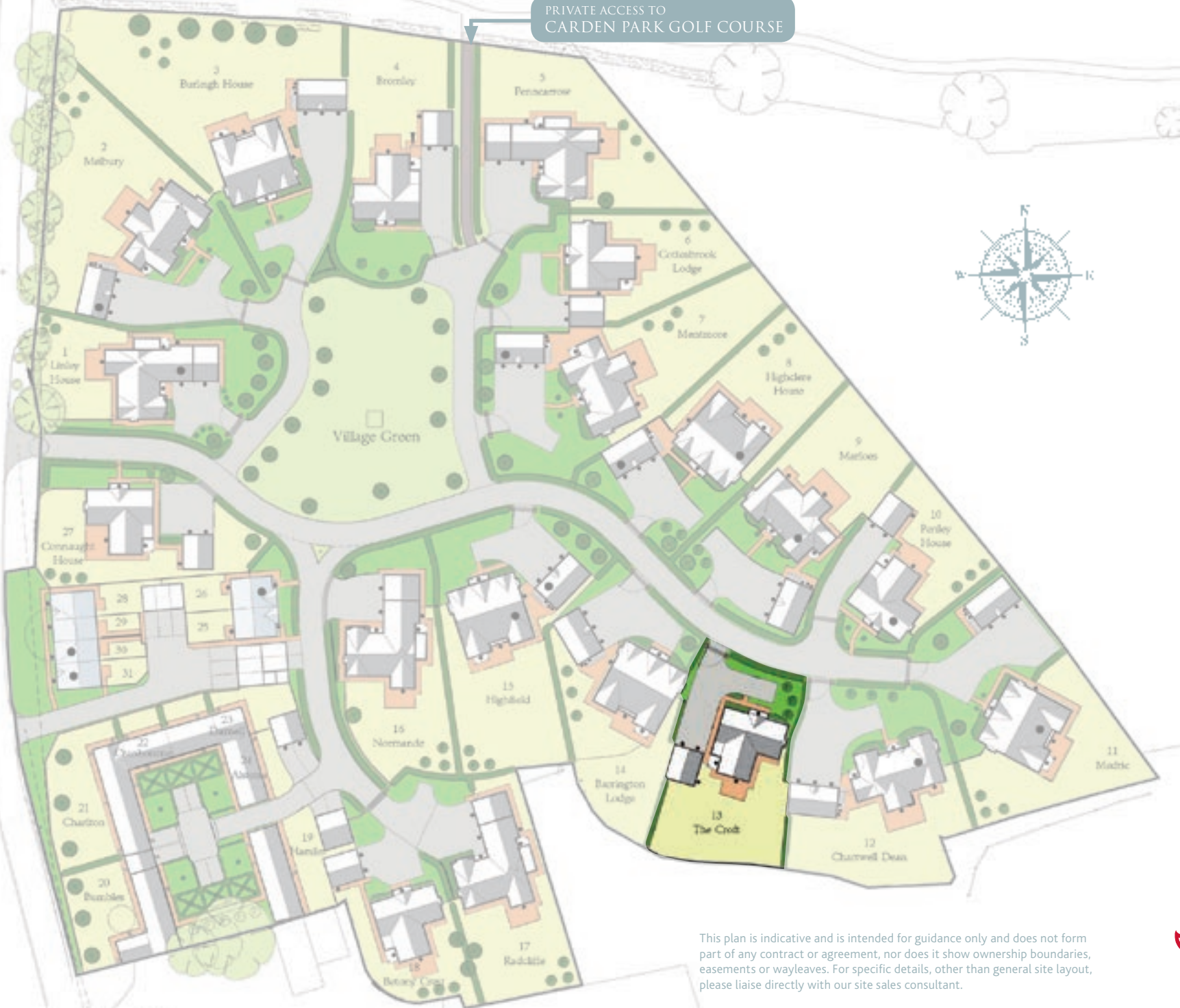
## FIRST FLOOR

Master Bedroom	19'5" x 12'3"	5.92m x 3.73m
Master En-Suite	13'9" x 7'2"	4.19m x 2.18m
Wardrobe	7'2" x 7'1"	2.18m x 2.15m
Bedroom 2	13'9" x 12'10"*	4.20m x 3.90m*
Bedroom 2 En-Suite	11'7" x 7'3"*	3.52m x 2.22m*
Bedroom 3	17'10" x 11'3"*	5.43m x 3.42m*
Bedroom 3 En-Suite	8'6" x 6'11"*	2.59m x 2.12m*
Bedroom 4	13'9" x 9'3"	4.19m x 2.82m
Bathroom	13'9" x 9'9"*	4.20m x 2.96m*

\* Maximum dimension



PRIVATE ACCESS TO  
CARDEN PARK GOLF COURSE



This plan is indicative and is intended for guidance only and does not form part of any contract or agreement, nor does it show ownership boundaries, easements or wayleaves. For specific details, other than general site layout, please liaise directly with our site sales consultant.