

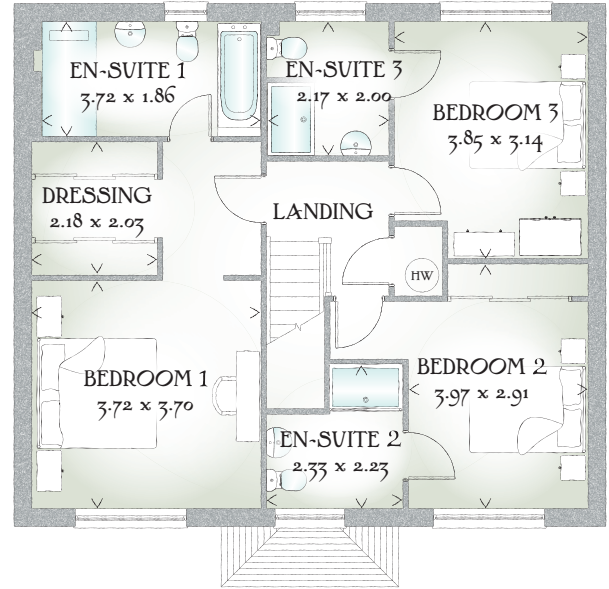
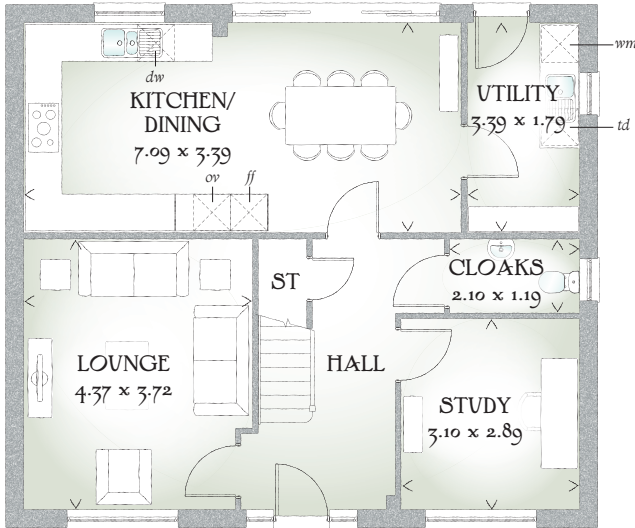


Dorchester

THREE BEDROOM HOME



 REDROW



THREE BEDROOM HOME

Elegant yet stunning, The Dorchester embodies the traditional lifestyle, a separate lounge and study means everyone has a space to call their own. An en-suite to all bedrooms ensures ultimate comfort for the whole family.

GROUND FLOOR

Lounge	14'4" x 12'2"	4.37 x 3.72 m
Kitchen / Dining	23'3" x 11'1"	7.09 x 3.39 m
Utility	11'1" x 5'10"	3.39 x 1.79 m
Study	10'2" x 9'6"	3.10 x 2.89 m
Cloaks	6'11" x 3'11"	2.10 x 1.19 m


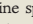
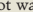
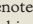
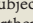
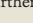
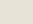
FIRST FLOOR

Bedroom 1	12'2" x 12'2"	3.72 x 3.70 m
Dressing Area	7'2" x 6'8"	2.18 x 2.03 m
En-Suite 1	12'2" x 6'1"	3.72 x 1.86 m
Bedroom 2	13'0" x 9'7"	3.97 x 2.91 m
En-Suite 2	7'8" x 7'4"	2.33 x 2.23 m
Bedroom 3	12'8" x 10'4"	3.85 x 3.14 m
En-Suite 3	7'1" x 6'7"	2.17 x 2.00 m

CONSUMER CODE FOR HOME BUILDERS

www.consumercode.co.uk

Customers should note this illustration is an example of The Dorchester house type. All dimensions indicated are approximate and the furniture layout is for illustrative purposes only. Homes may be 'handed' (mirror image) versions of the illustrations, and may be detached, semi-detached or terraced. Materials used may differ from plot to plot including render and roof tile colours. Detailed plans and specifications are available for inspection for each plot at our Sales Centre during working hours and customers must check their individual specifications prior to making a reservation.

KEY  Hob  Oven  Fridge/freezer  Washing machine space  Dishwasher space  Tumble dryer space  Hot water cylinder ST Cupboard

< Denotes where dimensions are taken from. All wardrobes are subject to site specification. Please see Sales Consultant for further details.

Traditional homes, built the way you remember