



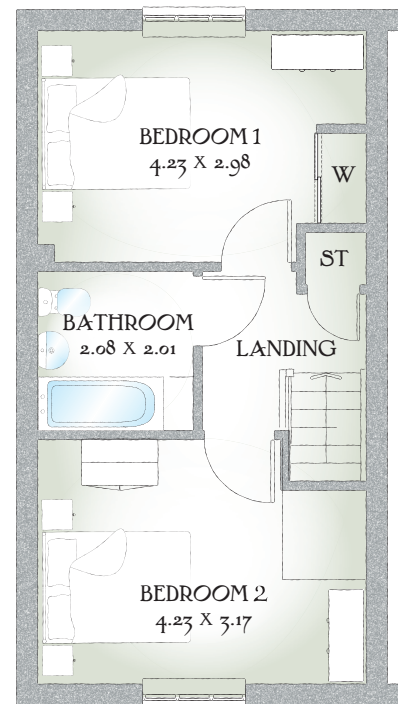
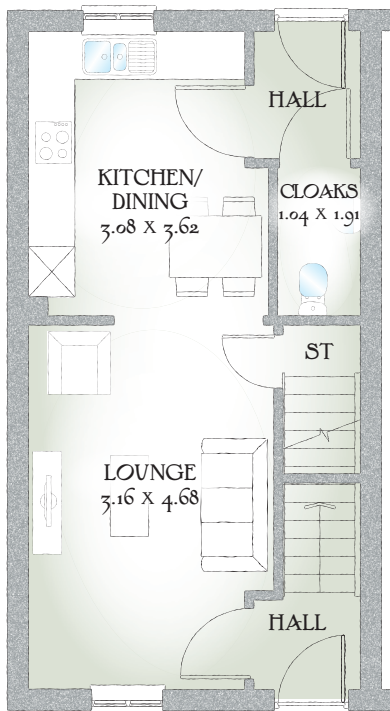
Edale

TWO BEDROOM HOME



 REDROW

Edale



TWO BEDROOM HOME

This great property features an integral kitchen, dining and living room giving a sense of open space.

GROUND FLOOR

Lounge	15'4" x 10'4"	4.68 x 3.16 m
Kitchen/ Dining	11'10" x 10'1"	3.62 x 3.08 m
Cloaks	6'3" x 3'4"	1.91 x 1.04 m

FIRST FLOOR

Bedroom 1	13'10" x 9'9"	4.23 x 2.98m
Bedroom 2	13'10" x 10'4"	4.23 x 3.17 m
Bathroom	6'9" x 6'7"	2.08 x 2.01 m

Customers should note this illustration is an example of The Edale house type. All dimensions indicated are approximate and the furniture layout is for illustrative purposes only. Homes may be 'handed' (mirror image) versions of the illustrations, and may be detached, semi-detached or terraced. Materials used may differ from plot to plot including render and roof tile colours. Detailed plans and specifications are available for inspection for each plot at our Sales Centre during working hours and customers must check their individual specifications prior to making a reservation.

KEY  Hob ST Cupboard W Wardrobe

*Max dimensions Note: Bedroom dimensions taken into wardrobe recess. All wardrobes are subject to site specification. Please see Sales Consultant for further details.

Traditional homes, built the way you remember

 **REDROW**
A BETTER WAY TO LIVE