



# Evesham†

TWO BEDROOM HOME



 REDROW



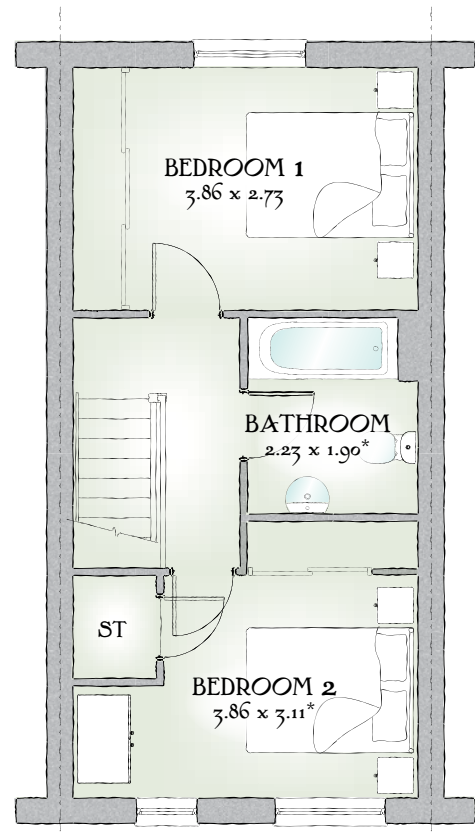
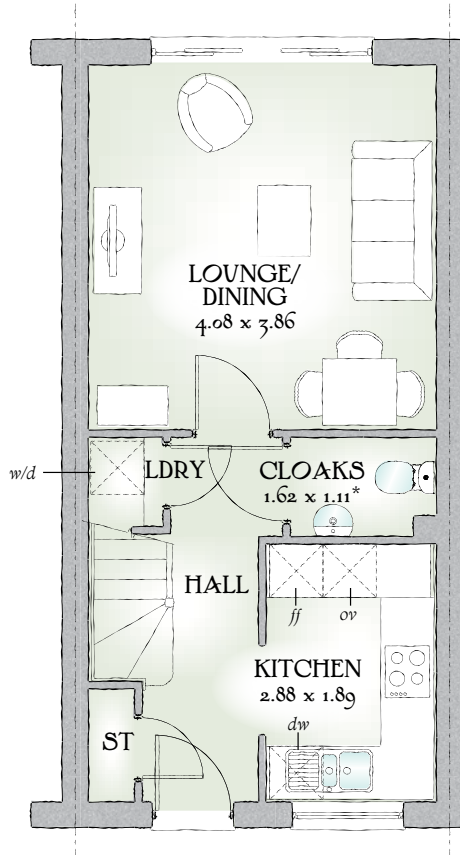
# Evesham†

TWO BEDROOM HOME





# Evesham†



699 SQ FT | TWO BEDROOM HOME

Proving that quality and craftsmanship are not exclusive to expensive properties, The Evesham embodies the essence of the Heritage Collection.

## GROUND FLOOR

Lounge/ Dining	13'5" x 12'8"	4.08 x 3.86 m
Kitchen	9'5" x 6'2"	2.88 x 1.89 m
Cloaks	5'4" x 3'8"	1.62 x 1.11 m*
Laundry	3'3" x 2'8"	1.00 x 0.81 m

## FIRST FLOOR

Bedroom 1	12'8" x 8'11"	3.86 x 2.73 m
Bedroom 2	12'8" x 10'2"	3.86 x 3.11 m*
Bathroom	7'4" x 6'3"	2.23 x 1.90 m*

Customers should note this illustration is an example of The Evesham housetype. All dimensions indicated are approximate and furniture layout is for illustrative purposes only. Homes may be a 'handed' (mirror image) versions of the illustrations, and may be detached, semi-detached or terraced. Materials used may differ from plot to plot including render and roof tile colours. Detailed plans and specifications are available for inspection for each plot at our Marketing Suite during working hours and customers must check their individual specifications prior to making reservation.

\*\* All wardrobes are subject to site specification. Please see Sales Consultant for further details.

Redrow.co.uk give notice that the property particulars and related information on this site, whilst believed to be accurate, are set as a general outline for guidance only. Intending purchasers should not rely on them as statements or representations of fact, but must satisfy themselves before physical inspection as to their availability, or by physical inspection of the property in question or otherwise as to their accuracy or fit for purpose. Consequently, no information displayed on this site (or linked sites) constitutes or forms part of a contract. Materials used may differ from plot to plot including render and roof tile colours.

KEY Hob ov Oven ff Fridge/freezer w/d Washer/dryer space  
dw Dishwasher space op Optional wardrobe\*\* bw Hot Water Cylinder  
\* Max dimensions Note: Bedroom dimensions taken into wardrobe recess

Traditional homes, built the way you remember

