



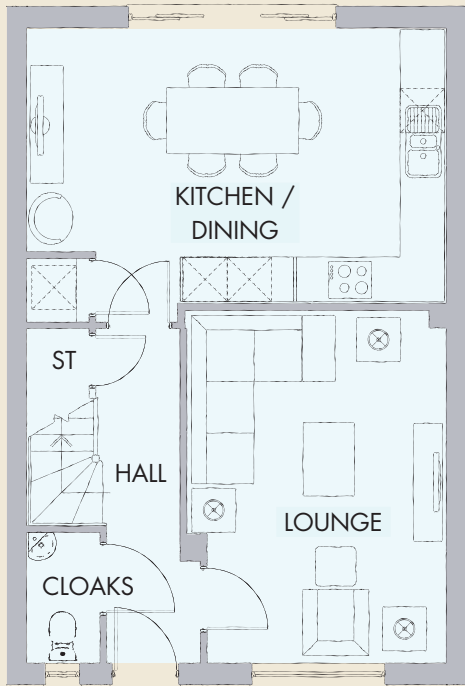
DORSET & FINSBURY

PLOT 1076



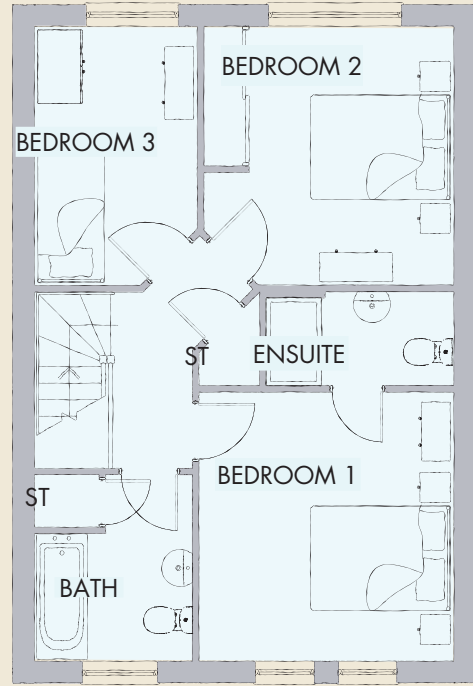
 REDROW

FINSBURY 1076



GROUND FLOOR

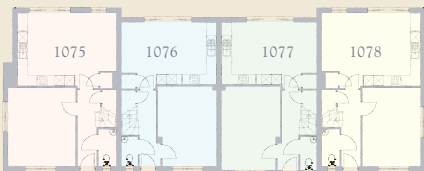
| | | |
|----------------|---------------|----------------|
| Lounge | 15'7" x 11'6" | 4.74 x 3.50 m* |
| Kitchen/Dining | 18'6" x 12'1" | 5.65 x 3.69 m* |
| Cloakroom | 5'9" x 3'3" | 1.75 x 0.98 m |



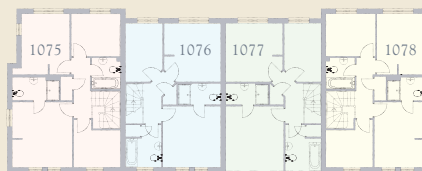
FIRST FLOOR

| | | |
|-----------|----------------|----------------|
| Bedroom 1 | 11'11" x 11'3" | 3.63 x 3.44 m |
| En-suite | 8'4" x 4'2" | 2.53 x 1.28 m* |
| Bedroom 2 | 11'5" x 11'1" | 3.49 x 3.38 m* |
| Bedroom 3 | 11'6" x 7'2" | 3.50 x 2.19 m* |
| Bathroom | 8'3" x 7'0" | 2.51 x 2.13 m* |

GROUND FLOOR



FIRST FLOOR



KEY

Hob

*Max dimensions Note: Bedroom dimensions taken into wardrobe recess

Please liaise with Sales Consultant for Dishwasher, Fridge Freezer, Oven and Washing Machine / Tumble Dryer locations.

Customers should note this illustration is an example of the house type. Please refer to your sales consultant for details of any elevational differences. All dimensions indicated are approximate. The specifications will vary from site to site and plot to plot. Detailed plans and specifications are available for inspection for each plot at our Sales Centre during working hours and customers must check their individual specifications prior to making a reservation. Please note, steel frame house types will benefit from a slight increase to some room sizes.

Traditional homes, built the way you remember

REDROW
A BETTER WAY TO LIVE