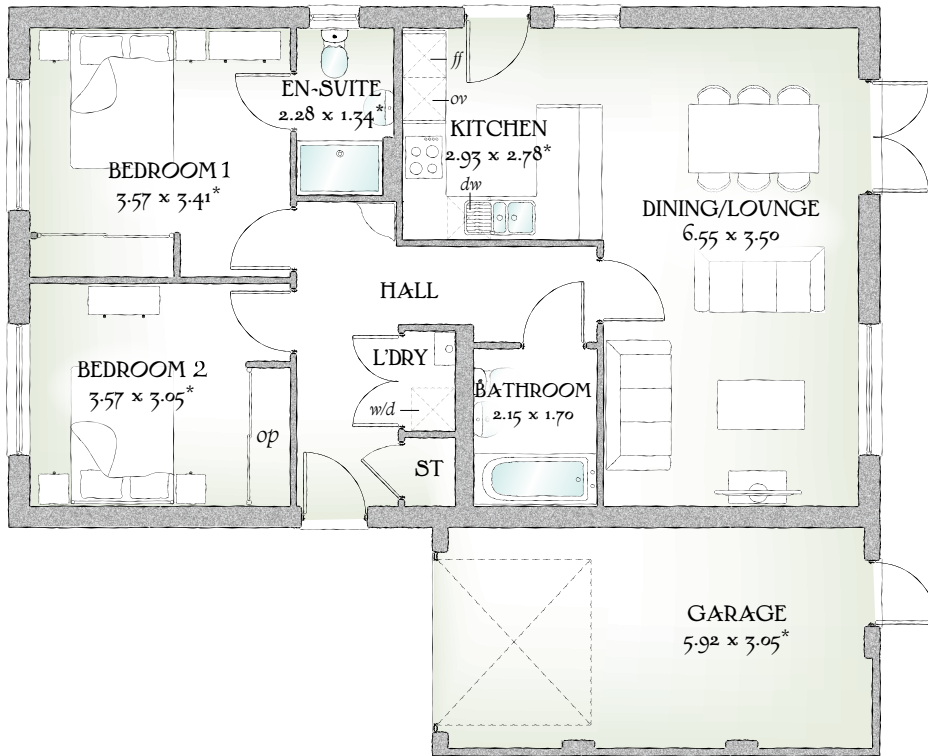




Hadleigh

TWO BEDROOM HOME





TWO BEDROOM HOME

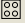
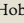
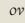
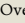
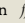
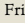
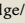
The open plan design of The Hadleigh makes the most of the space, yet keeps it compact and easy to manage. With a combined dining/lounge/kitchen area forming the heart of your home, and the luxury of an en-suite master bedroom.

GROUND FLOOR

Dining/Lounge	21'6" x 11'6"	6.55 x 3.50 m
Kitchen	9'7" x 9'1"	2.93 x 2.78 m*
Bedroom 1	11'9" x 11'2"	3.57 x 3.41 m*
En-suite	7'6" x 4'5"	2.28 x 1.34 m*

Bedroom 2	11'9" x 10'0"	3.57 x 3.05 m*
Bathroom	7'1" x 5'7"	2.15 x 1.70 m
Garage	19'5" x 10'0"	5.92 x 3.05 m*

Customers should note this illustration is an example of The Hadleigh house type. All dimensions indicated are approximate and the furniture layout is for illustrative purposes only. Homes may be 'handed' (mirror image) versions of the illustrations, and may be detached, semi-detached or terraced. Materials used may differ from plot to plot including render and roof tile colours. Detailed plans and specifications are available for inspection for each plot at our Sales Centre during working hours and customers must check their individual specifications prior to making a reservation.

KEY  Hob  Oven  Fridge/freezer  Washer/dryer  Dishwasher space  Optional wardrobe  Cupboard
*Max dimensions Note: Bedroom dimensions taken into wardrobe recess. All wardrobes are subject to site specification. Please see Sales Consultant for further details.

Traditional homes, built the way you remember



REDROW
A BETTER WAY TO LIVE