

APARTMENT SPECIFICATIONS

Interior Features

Walls Dulux off-white emulsion paint finish

Internal Doors

'Cambridge' internal moulded door finished in satin white paint

Internal Door Furniture

Polished or satin chrome effect door furniture

Architrave 'Torus' profile MDF, satin white paint finish

Skirting boards 'Torus' profile MDF, satin white paint finish

Ceilings Flat skim finish with white emulsion paint decoration

Central Heating

Full gas central heating with energy efficient combi / cylinder boiler. Please see Sales Consultant for further details. Mains pressure domestic hot water provided to all apartments

Radiators Myson round top radiators

Phone Point Fittings to match electrical accessories located as follows: 1 in lounge and 1 in bedroom one

TV Point Fittings to match electrical accessories located as follows: 1 in lounge, and 1 in bedroom one

Electrical Sockets / Switch Plates

Low profile white electrical switch and socket plates together with pendant and batten lighting points
A number of the light fittings installed will be energy efficient
Please refer to apartment drawings for all location details

Downlighters To kitchen, family, dining, wetrooms, bathrooms and en-suites. Located as shown on drawings

Smoke Detectors

Fitted as standard to every property. These are connected to the mains electricity supply and have provision for a battery back-up in the event of a power cut

Consumer Unit Semi recessed Legrand consumer unit. Please refer to drawings for locations

Kitchen & Utility Features

Kitchen Styles A range of quality kitchen styles available. Please see Sales Consultant for further details

Work Surfaces A range of quality work surfaces available. Please see Sales Consultant for further details

Upstand 95mm high matching upstand above worktops, with black glass or stainless steel splashback behind hob

Sink

Kitchen Stainless steel Blanco 1½ bowl sink, with 'Prinz' tap

Appliances

60cm Ceramic Hob
Single Oven
Microwave Oven
Chimney Style Extract
Integrated Fridge/Freezer
See Sales Consultant for further details

Bathroom & Cloakroom Features

Bathroom, EnSuite & Cloakroom Styles

Ideal Standard in white finish

Bath 700 wide by 1700 long with unilux bath panel

Shower to Bathroom and EnSuite (if applicable)

Valve Ideal Standard 'Alto Ecotherm' thermostatic bar valve
Tray Acrylic capped low profile shower tray, with concealed waste
Shower Screen to Enclosure Door in chrome effect finish

Sanitaryware

Bathroom Basin 50cm Sphere basin with semi pedestal & pivot style waste
EnSuite Basin 50cm Sphere basin with semi pedestal & pivot style waste
WC Concept close coupled back-to-wall pan with Arc dual flush cistern
Cloak Basin 45cm Sphere basin with chrome tap or Concept Arc 45cm corner basin. Please refer to drawing

Brassware

Basin Ideal Standard 'Ceraplan' monoblock tap with single lever control complete with pivot waste
Bath Ideal Standard 'Ceraplan' single lever bath filler complete with pivot waste
Shower over Bath Thermostatic shower valve and bath screen to be provided above the bath where there is no separate shower enclosure within the bathroom

Accessories

Towel Warmer Ferroli towel warmer in chrome effect finish to bathroom and EnSuite
Toilet Roll Holder Chrome toilet roll holder to all WCs

Shaver Socket

Located in the EnSuite and bathroom, finish to match electrical plates

Exterior Features

Fascia & Soffit UPVC fascia and vented soffit board in white

Rainwater System

The rainwater gutters and downpipes finish to be black

Windows Sealed double glazed pvc-u windows in white finish
Please refer to the development finishing schedule

Security Audio entrance system



Harbour Village

APARTMENTS



Traditional homes, built the way you remember

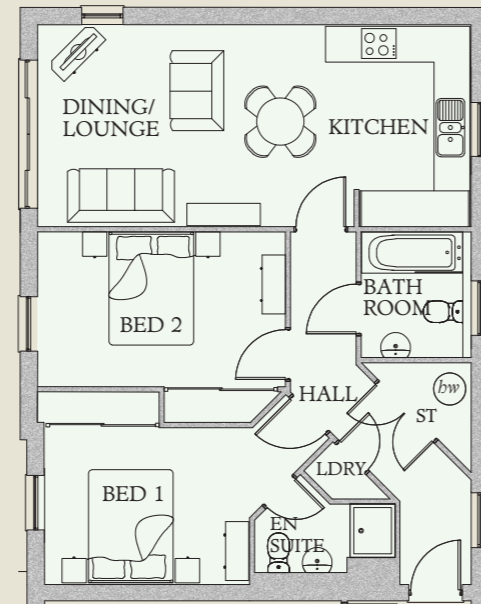
 **REDROW**
OUR PRIDE~YOUR JOY

Harbour Village

ONE & TWO BEDROOM APARTMENTS

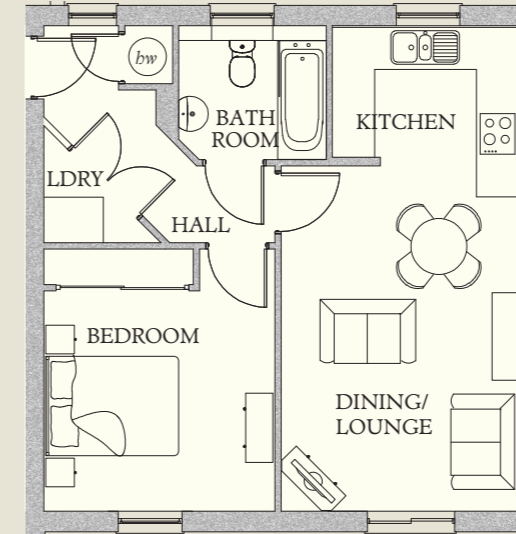
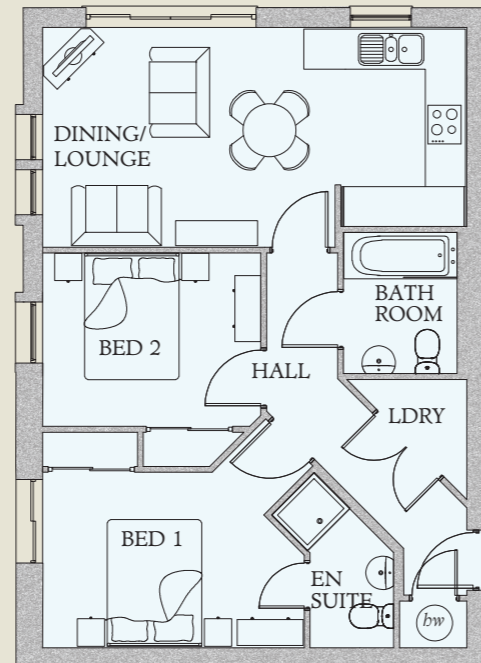
HAYESWATER 142 & 145

Lounge / Dining	15'5" x 11'1"	4.69 x 3.37 m
Kitchen	11'1" x 8'0"	3.37 x 2.43 m*
Bedroom 1	15'7" x 10'6"	4.76 x 3.21 m*
EnSuite	7'9" x 5'5"	2.35 x 1.65 m*
Bedroom 2	13'2" x 10'6"	4.02 x 3.20 m*
Bathroom	6'11" x 5'7"	2.11 x 1.70 m
Laundry	4'6" x 2'3"	1.36 x 0.69 m*



HAYESWATER 143 & 146

Lounge / Dining	12'9" x 10'9"	3.89 x 3.27 m
Kitchen	9'9" x 8'0"	2.96 x 2.43 m*
Bedroom 1	12'10" x 10'6"	3.90 x 3.21 m*
EnSuite	8'6" x 4'1"	2.60 x 1.25 m*
Bedroom 2	10'8" x 10'6"	3.25 x 3.20 m*
Bathroom	6'11" x 5'7"	2.12 x 1.71 m
Laundry	8'2" x 4'2"	2.51 x 1.26 m*

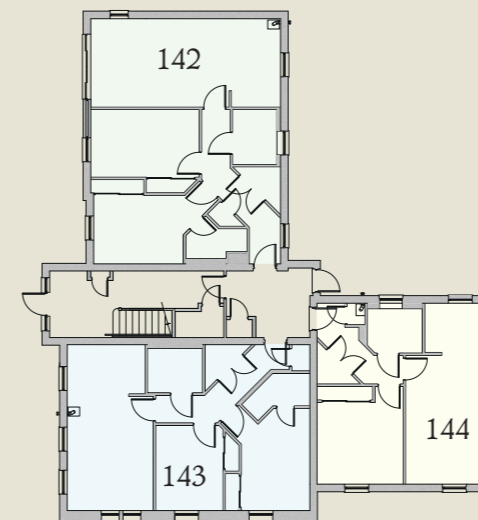


HAYESWATER 144 & 147

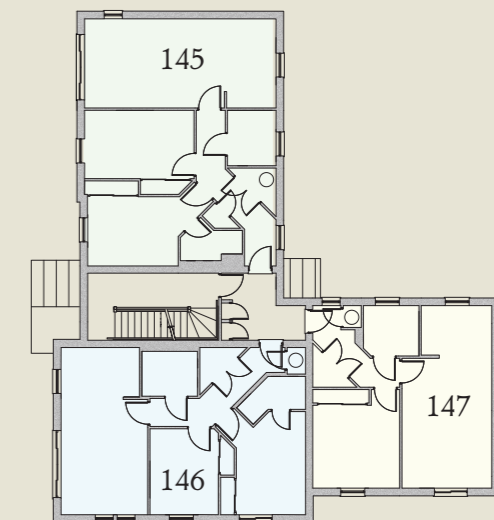
Lounge / Dining	14'8" x 11'1"	4.47 x 3.39 m
Kitchen	8'9" x 8'0"	2.66 x 2.43 m*
Bedroom	12'3" x 10'9"	3.73 x 3.28 m
Bathroom	6'11" x 5'7"	2.11 x 1.70 m*
Laundry	7'8" x 3'10"	2.33 x 1.17 m*

APARTMENT LOCATIONS

GROUND FLOOR



FIRST FLOOR



KEY

Electric Hob Hot Water Cylinder

* Max dimensions Note: Bedroom dimensions taken into wardrobe recess

Customers should note this illustration is an example of the housetype. Please refer to your sales consultant for details of any elevational differences. All dimensions indicated are approximate. The specifications will vary from site to site and plot to plot. Detailed plans and specifications are available for inspection for each plot at our Marketing Suite during working hours and customers must check their individual specifications prior to making a reservation. Please note, steel frame housetypes will benefit from a slight increase to some room sizes.

Traditional homes, built the way you remember

