



Henley

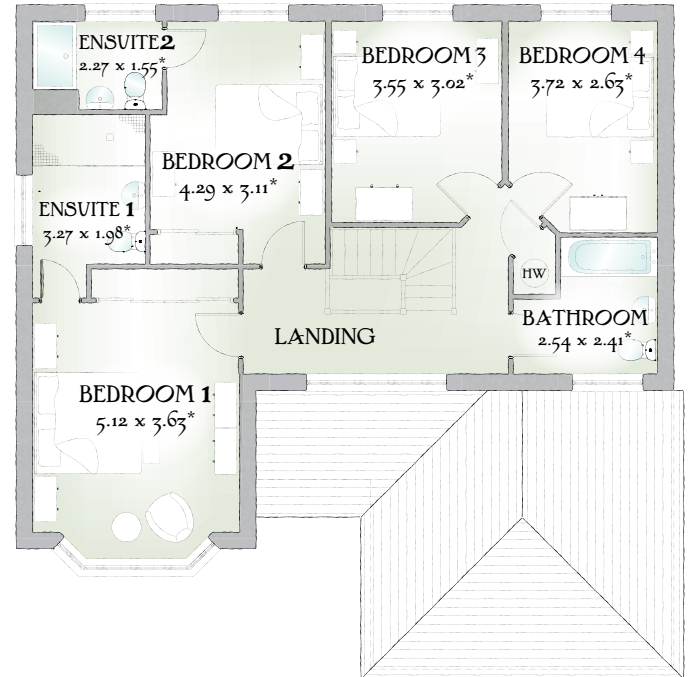
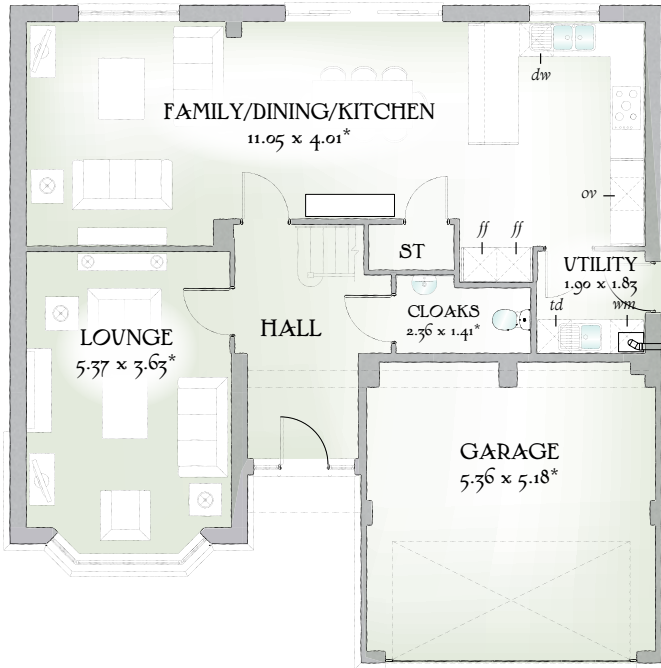
FOUR BEDROOM HOME



 REDROW



Henley



1769 SQ FT | FOUR BEDROOM HOME

As an executive home, The Henley is undeniably impressive, with a double garage, two en suite bedrooms and thirty-six foot family dining and kitchen area. A generously proportioned home of real quality and character.

GROUND FLOOR

Lounge	17'7" x 11'11"	5.37 x 3.63 m*
Family/Dining/Kitchen	36'3" x 13'2"	11.05 x 4.01 m*
Utility	6'3" x 6'0"	1.90 x 1.83 m
Cloaks	7'9" x 4'8"	2.36 x 1.41 m*
Garage	17'7" x 17'0"	5.36 x 5.18 m*

FIRST FLOOR

Bedroom 1	16'10" x 11'11"	5.12 x 3.63 m*
EnSuite 1	10'9" x 6'6"	3.27 x 1.98 m*
Bedroom 2	14'1" x 10'2"	4.29 x 3.11 m*
EnSuite 2	7'5" x 5'1"	2.27 x 1.55 m*
Bedroom 3	11'8" x 9'11"	3.55 x 3.02 m*
Bedroom 4	12'2" x 8'7"	3.72 x 2.63 m*
Bathroom	8'4" x 7'11"	2.54 x 2.41 m*

Customers should note this illustration is an example of The Henley housetype. All dimensions indicated are approximate and furniture layout is for illustrative purposes only. Homes may be 'handed' (mirror image) versions of the illustrations, and may be detached, semi-detached or terraced. Materials used may differ from plot to plot including render and roof tile colours. Detailed plans and specifications are available for inspection for each plot at our Marketing Suite during working hours and customers must check their individual specifications prior to making reservation.

** All wardrobes are subject to site specification. Please see Sales Consultant for further details.

KEY Hob *ov* Oven *ff* Fridge/freezer *wm* Washing machine space *dw* Dishwasher space *op* Optional wardrobe** *td* Tumble dryer space *hw* Hot Water Cylinder

*Max dimensions Note: Bedroom dimensions taken into wardrobe recess

Traditional homes, built the way you remember

