

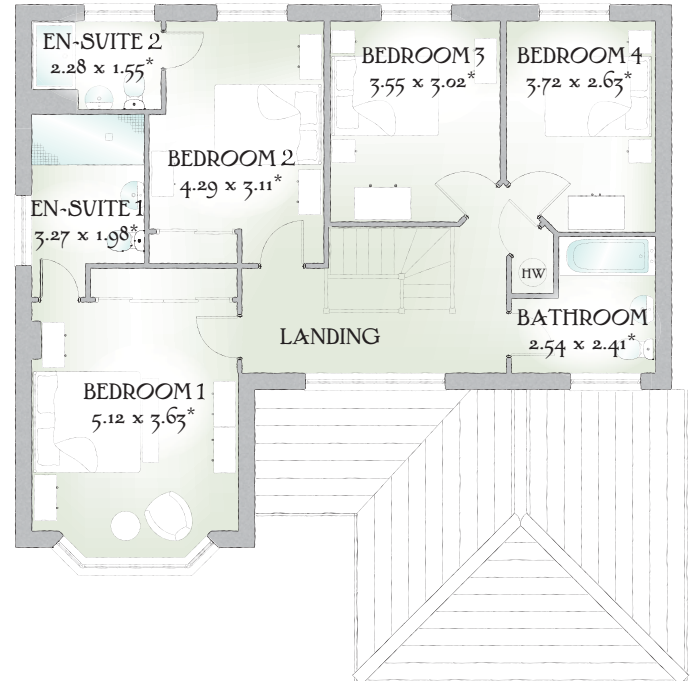
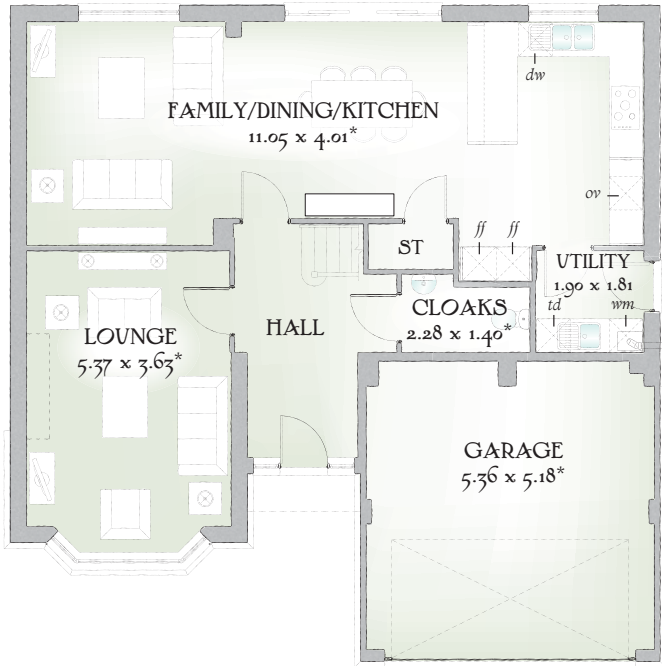


Henley

FOUR BEDROOM HOME



 REDROW



FOUR BEDROOM HOME

As an executive home, The Henley is undeniably impressive, with a double garage, two en-suite bedrooms and thirty-six foot family dining and kitchen area. A generously proportioned home of real quality and character.

GROUND FLOOR

Lounge	17'7" x 11'11"	5.37 x 3.63 m*
Family/ Dining/ Kitchen	36'3" x 13'2"	11.05 x 4.01 m*
Utility	6'3" x 5'11"	1.90 x 1.81 m
Cloaks	7'6" x 4'7"	2.28 x 1.40 m*
Garage	17'7" x 17'0"	5.36 x 5.18 m*


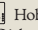
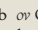

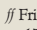
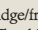
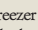
FIRST FLOOR

Bedroom 1	16'10" x 11'11"	5.12 x 3.63 m*
En-suite 1	10'9" x 6'6"	3.27 x 1.98 m*
Bedroom 2	14'1" x 10'2"	4.29 x 3.11 m*
En-suite 2	7'6" x 5'1"	2.28 x 1.55 m*
Bedroom 3	11'8" x 9'11"	3.55 x 3.02 m*
Bedroom 4	12'2" x 8'7"	3.72 x 2.63 m*
Bathroom	8'4" x 7'11"	2.54 x 2.41 m*

CONSUMER
CODE FOR
HOME BUILDERS

www.consumercode.co.uk

Customers should note this illustration is an example of The Henley house type. All dimensions indicated are approximate and furniture layout is for illustrative purposes only. Homes may be 'handed' (mirror image) versions of the illustrations, and may be detached, semi-detached or terraced. Materials used may differ from plot to plot including render and roof tile colours. Detailed plans and specifications are available for inspection for each plot at our Sales Centre during working hours and customers must check their individual specifications prior to making a reservation.

KEY  Hob  Oven  Fridge/freezer  Washing machine space  Dishwasher space  Tumble dryer space  Hot water cylinder ST Cupboard

*Max dimensions Note: Bedroom dimensions taken into wardrobe recess. All wardrobes are subject to site specification. Please see Sales Consultant for further details.

Redrow.co.uk give notice that the property particulars and related information on this site, whilst believed to be accurate, are set as a general outline for guidance only. Intending purchasers should not rely on them as statements or representations of fact, but must satisfy themselves before physical inspection as to their availability, or by physical inspection of the property in question or otherwise as to their accuracy or fit for purpose. Consequently, no information displayed on this site (or linked sites) constitutes or forms part of a contract. Materials used may differ from plot to plot including render and roof tile colours.

Traditional homes, built the way you remember