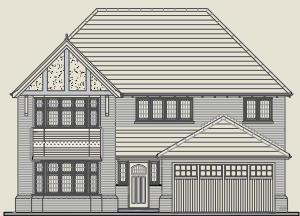


THE Henley

1769 SQ FT - FOUR BEDROOM HOME



As an executive home, The Henley is undeniably impressive, with a double garage, two en suite bedrooms and thirty-six foot family dining and kitchen area. A generously proportioned home of real quality and character.

THE Henley

1769 SQ FT -
FOUR BEDROOM HOME

Reflecting the inspiration of the Arts and Crafts movement and driven by the desire to preserve individuality and craftsmanship.

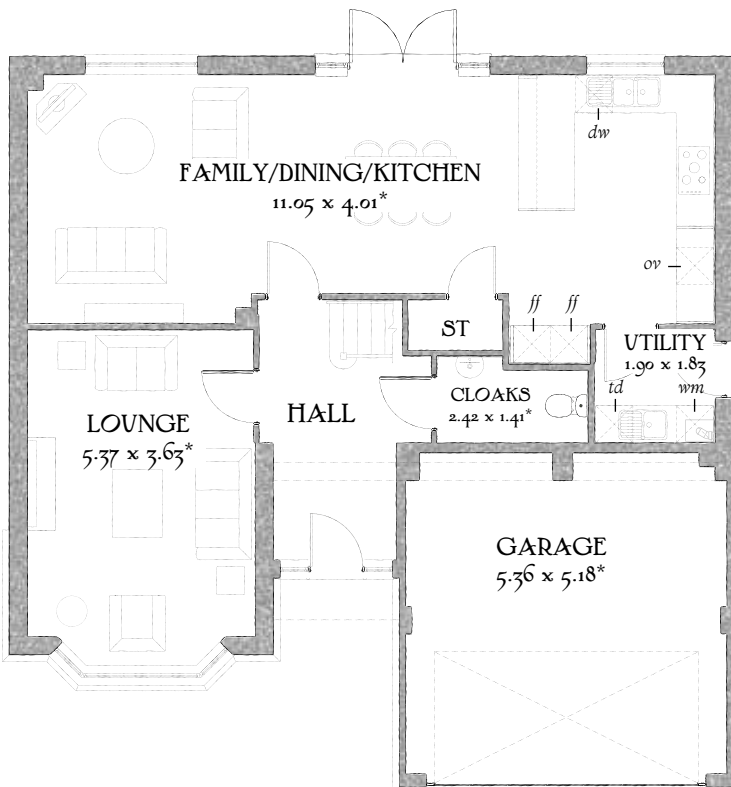
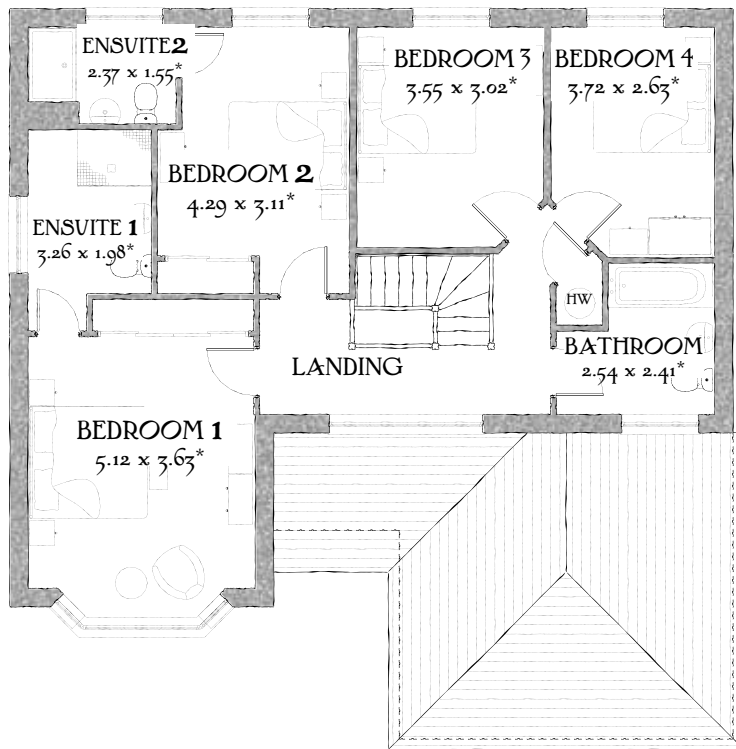
The New Heritage Collection by Redrow, welcomes everyone in and leaves no-one out.

FIRST FLOOR

Bedroom 1	16'10" x 11'11"	5.12 x 3.63 m*
EnSuite 1	10'8" x 6'6"	3.26 x 1.98 m*
Bedroom 2	14'1" x 10'2"	4.29 x 3.11 m*
EnSuite 2	7'9" x 5'1"	2.37 x 1.55 m*
Bedroom 3	11'8" x 9'11"	3.55 x 3.02 m*
Bedroom 4	12'2" x 8'7"	3.72 x 2.63 m*
Bathroom	8'4" x 7'11"	2.54 x 2.41 m*

GROUND FLOOR

Lounge	17'7" x 11'11"	5.37 x 3.63 m*
Family/ Dining/ Kitchen	36'3" x 13'2"	11.05 x 4.01 m*
Utility	6'3" x 6'0"	1.90 x 1.83 m*
Cloaks	7'11" x 4'8"	2.42 x 1.41 m*
Garage	17'7" x 17'0"	5.36 x 5.18 m*



KEY

Hob Oven Fridge/freezer Washing machine space
 Dishwasher space Optional wardrobe Tumble dryer space
 Hot Water Cylinder

* Max dimensions Note: Bedroom dimensions taken into wardrobe recess

Customers should note this illustration is an example of The Henley housetype. All dimensions indicated are approximate and furniture layout is for illustrative purposes only. Homes may be a 'handed' (mirror image) versions of the illustrations, and may be detached, semi-detached or terraced. Materials used may differ from plot to plot including render and roof tile colours. Detailed plans and specifications are available for inspection for each plot at our Marketing Suite during working hours and customers must check their individual specifications prior to making reservation.

USP-19419 WE4H176-1

Traditional homes, built the way you remember

