



# Kenilworth<sup>4</sup>

FOUR BEDROOM HOME

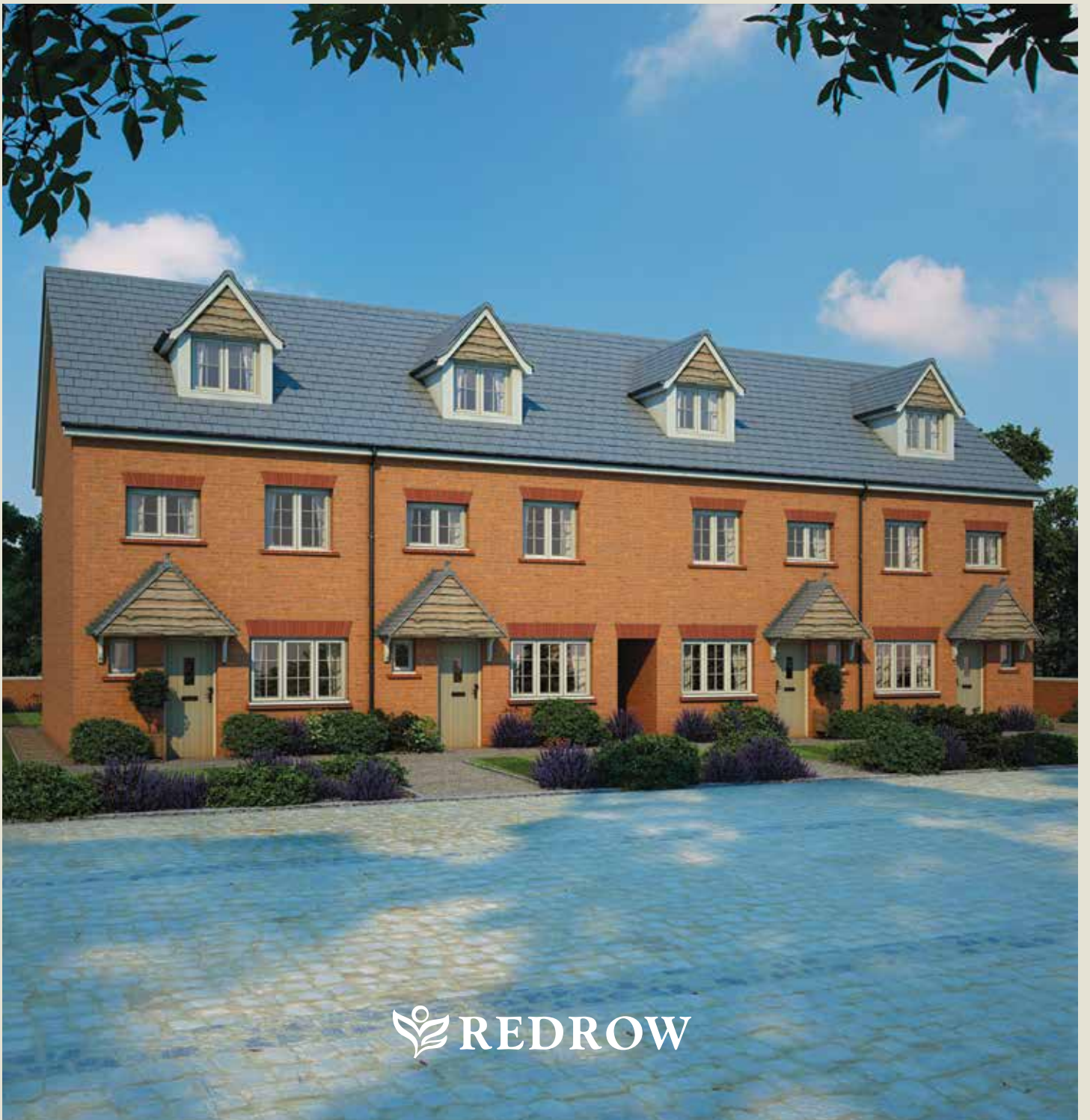


 REDROW

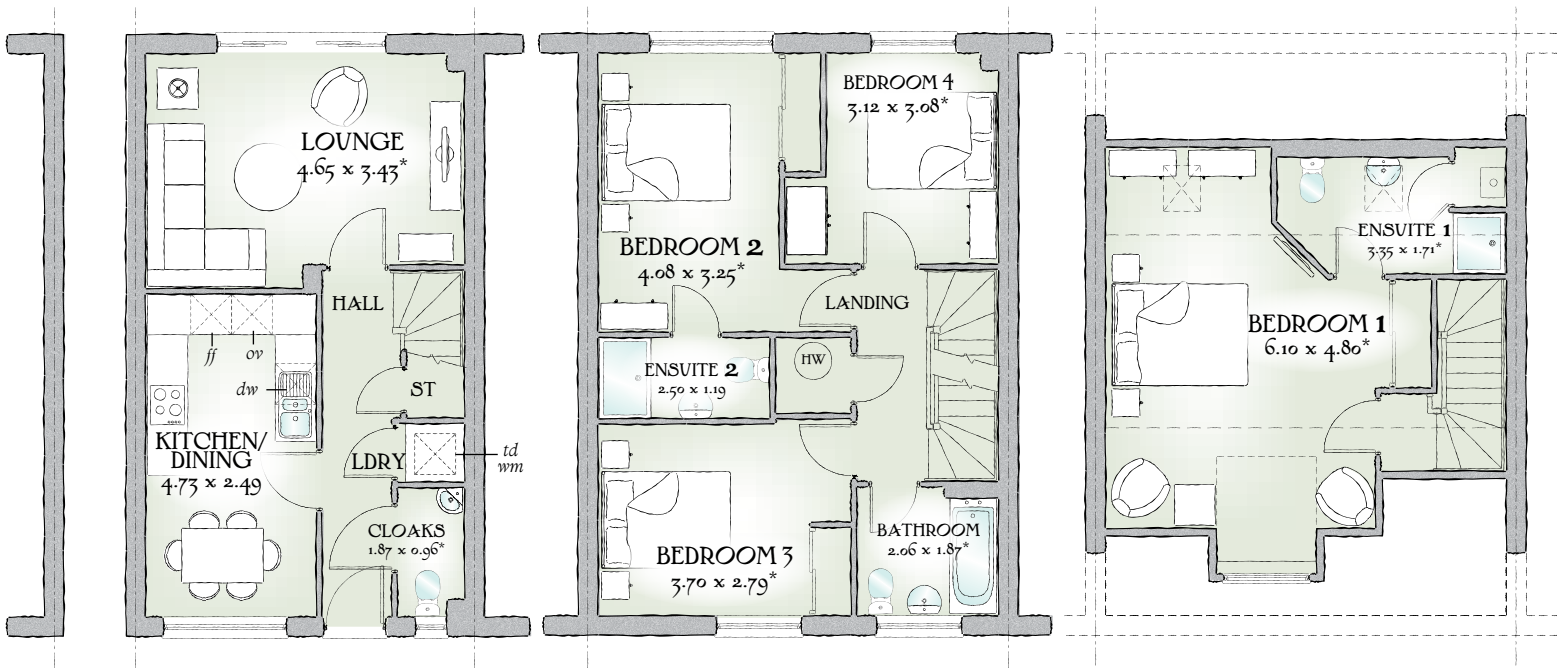


# Kenilworth<sup>4</sup>

FOUR BEDROOM HOME



 REDROW



Carefully considered design elevates this three storey home above its townhouse rivals, creating a superb home of spacious rooms that reach their peak in the exceptional second floor master suite, which is so much more than just a bedroom.

1288 SQ FT | FOUR BEDROOM HOME

## GROUND FLOOR

Lounge	15'3" x 11'3"	4.65 x 3.43 m*
Kitchen/ Dining	15'6" x 8'2"	4.73 x 2.49 m
Cloaks	6'2" x 3'2"	1.87 x 0.96 m*
Laundry	3'2" x 2'10"	0.96 x 0.86 m

## FIRST FLOOR


Bedroom 2	13'5" x 10'8"	4.08 x 3.25 m*
En-suite 2	8'2" x 3'11"	2.50 x 1.19 m
Bedroom 3	12'2" x 9'2"	3.70 x 2.79 m*
Bedroom 4	10'3" x 10'1"	3.12 x 3.08 m*
Bathroom	6'9" x 6'2"	2.06 x 1.87 m*

## SECOND FLOOR

Bedroom 1	20'0" x 15'9"	6.10 x 4.80 m*
En-suite 1	11'0" x 5'7"	3.35 x 1.71 m*

Customers should note this illustration is an example of The Kenilworth house type. All dimensions indicated are approximate and the furniture layout is for illustrative purposes only. Homes may be 'handed' (mirror image) versions of the illustrations, and may be detached, semi-detached or terraced. Materials used may differ from plot to plot including render and roof tile colours. Detailed plans and specifications are available for inspection for each plot at our Sales Centre during working hours and customers must check their individual specifications prior to making a reservation.

Redrow.co.uk give notice that the property particulars and related information on this site, whilst believed to be accurate, are set as a general outline for guidance only. Intending purchasers should not rely on them as statements or representations of fact, but must satisfy themselves before physical inspection as to their availability, or by physical inspection of the property in question or otherwise as to their accuracy or fit for purpose. Consequently, no information displayed on this site (or linked sites) constitutes or forms part of a contract. Materials used may differ from plot to plot including render and roof tile colours.

KEY  Hob *ov* Oven *ff* Fridge/freezer *wm* Washing machine space *dw* Dishwasher space *td* Tumble dryer space *hw* Hot Water Cylinder  
\*Max dimensions Note: Bedroom dimensions taken into wardrobe recess. All wardrobes are subject to site specification. Please see Sales Consultant for further details.

Traditional homes, built the way you remember

 **REDROW**  
A BETTER WAY TO LIVE