



Kensington

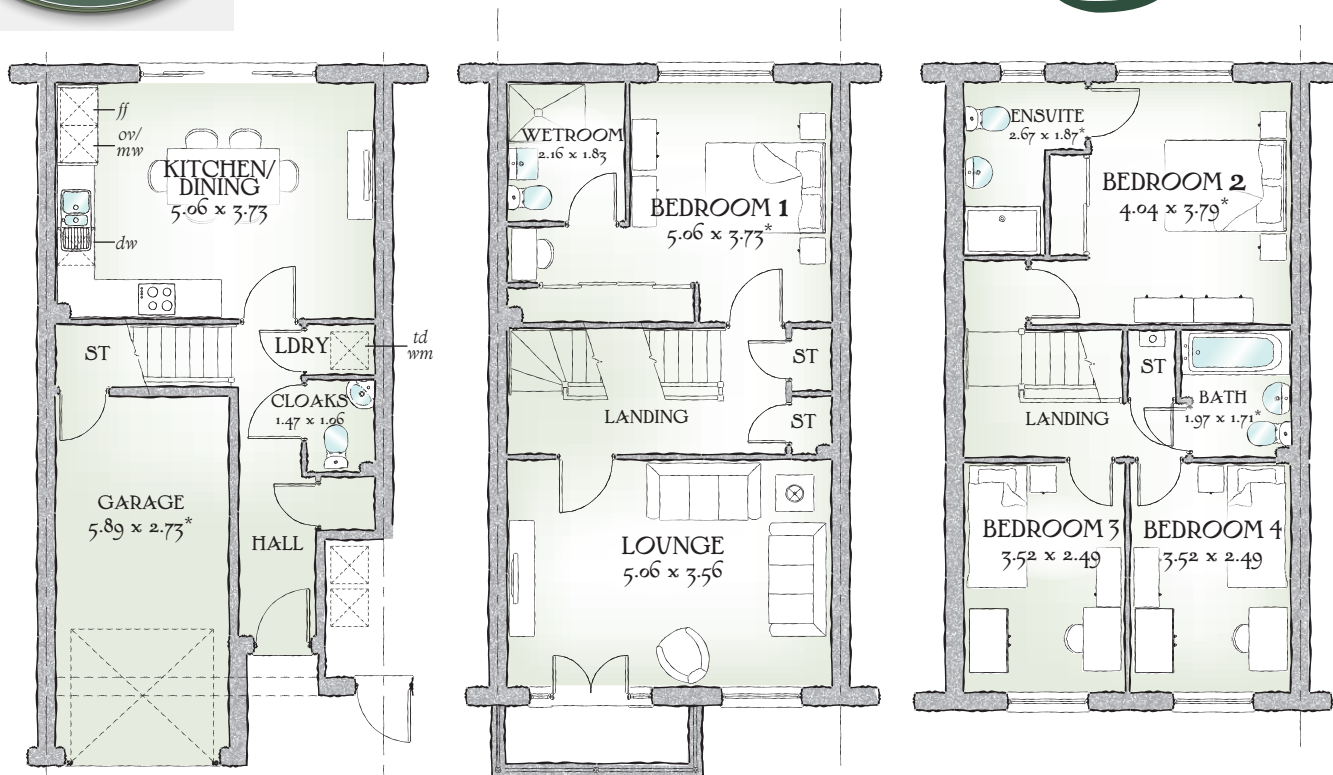
FOUR BEDROOM HOME



 REDROW



Kensington



The Kensington three storey home, with its balcony off the main lounge, is a home to help you relax and unwind. The innovative design ensures complete flexibility to suit your lifestyle.

1383 SQ FT | FOUR BEDROOM HOME

GROUND FLOOR

Kitchen/ Dining	16'7" x 12'3"	5.06 x 3.73 m
Cloaks	4'10" x 3'6"	1.47 x 1.06 m
Laundry	3'6" x 2'7"	1.06 x 0.80 m
Garage	19'4" x 8'11"	5.89 x 2.73 m*

FIRST FLOOR

Lounge	16'7" x 11'7"	5.06 x 3.56 m
Bedroom 1	16'7" x 12'3"	5.06 x 3.73 m*
Wetroom	7'1" x 6'0"	2.16 x 1.83 m

SECOND FLOOR

Bedroom 2	13'3" x 12'5"	4.04 x 3.79 m*
En-suite	8'9" x 6'2"	2.67 x 1.87 m*
Bedroom 3	11'7" x 8'2"	3.52 x 2.49 m
Bedroom 4	11'7" x 8'2"	3.52 x 2.49 m
Bathroom	6'6" x 5'7"	1.97 x 1.71 m*

Customers should note that this illustration is an example of The Kensington house type. All dimensions indicated are approximate and the furniture layout is for illustrative purposes only. Homes may be 'handed' (mirror image) versions of the illustrations, and may be detached, semi-detached or terraced. Materials used may differ from plot to plot including render and roof tile colours. Detailed plans and specifications are available for inspection for each plot at our Sales Centre during working hours and customers must check their individual specifications prior to making a reservation.

KEY Hob Oven Fridge/freezer Dishwasher space
 Washer / Dryer Microwave Hot Water Cylinder
 * Max dimensions Note: Bedroom dimensions taken into wardrobe recess. All wardrobes are subject to site specification. Please see Sales Consultant for further details.

Traditional homes, built the way you remember

