



Letchworth

THREE BEDROOM HOME



 REDROW

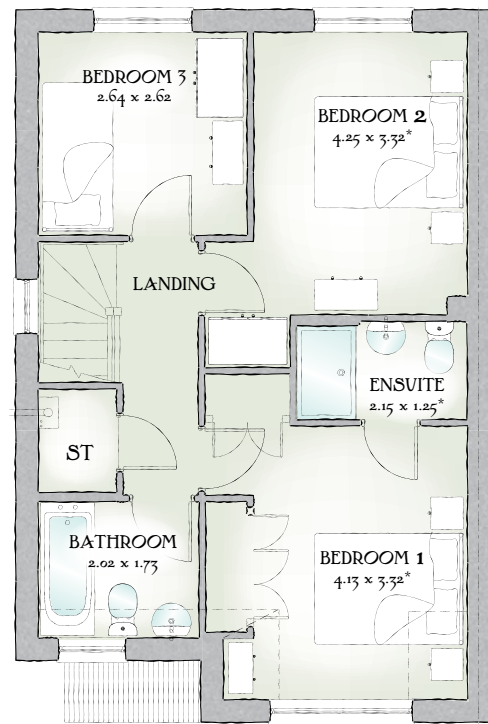
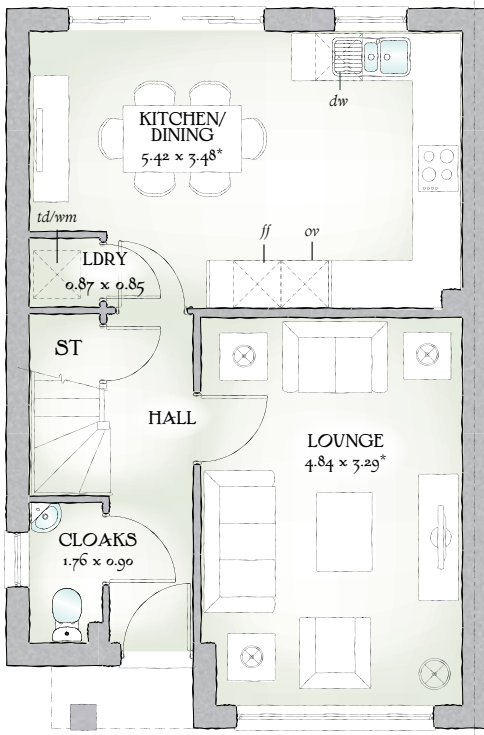


Letchworth

THREE BEDROOM HOME



 REDROW



963 SQ FT | THREE BEDROOM HOME

Quality doesn't have to be complicated. Sometimes, the simplest things have an undeniable elegance and charm, as you'll discover in the beautifully laid out Letchworth.

GROUND FLOOR

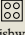
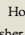
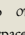
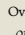
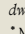
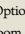
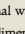
Lounge	15'11" x 10'10"	4.84 x 3.29 m*
Kitchen/ Dining	17'9" x 11'5"	5.42 x 3.48 m*
Cloaks	5'9" x 2'11"	1.76 x 0.90 m*
Laundry	2'10" x 2'9"	0.87 x 0.85 m

FIRST FLOOR

Bedroom 1	13'7" x 10'11"	4.13 x 3.32 m*
EnSuite	7'1" x 4'1"	2.15 x 1.25 m*
Bedroom 2	13'11" x 10'11"	4.25 x 3.32 m*
Bedroom 3	8'8" x 8'7"	2.64 x 2.62 m
Bathroom	6'8" x 5'8"	2.02 x 1.73 m

Customers should note this illustration is an example of The Letchworth housetype. All dimensions indicated are approximate and furniture layout is for illustrative purposes only. Homes may be 'handed' (mirror image) versions of the illustrations, and may be detached, semi-detached or terraced. Materials used may differ from plot to plot including render and roof tile colours. Detailed plans and specifications are available for inspection for each plot at our Marketing Suite during working hours and customers must check their individual specifications prior to making reservation.

** All wardrobes are subject to site specification. Please see Sales Consultant for further details.

KEY  Hob  Oven  Fridge/freezer  Washing machine space  Dishwasher space  Optional wardrobe**  Tumble dryer space

* Max dimensions Note: Bedroom dimensions taken into wardrobe recess

Traditional homes, built the way you remember

 **REDROW**
OUR PRIDE~YOUR JOY