



Letchworth

THREE BEDROOM HOME



 REDROW



Letchworth

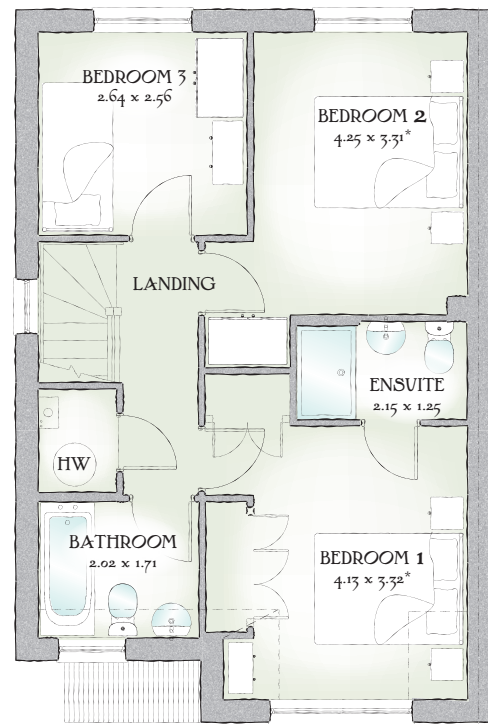
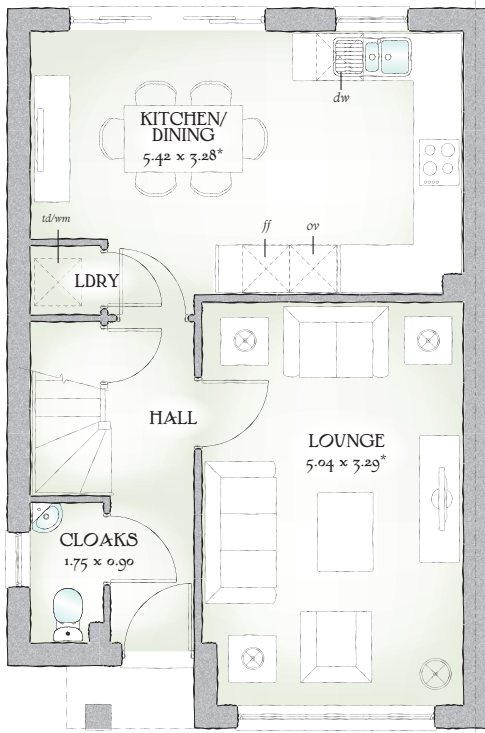
THREE BEDROOM HOME



 REDROW



Letchworth



963 SQ FT | THREE BEDROOM HOME

Quality doesn't have to be complicated. Sometimes, the simplest things have an undeniable elegance and charm, as you'll discover in the beautifully laid out Letchworth.

GROUND FLOOR

Lounge	16'6" x 10'10"	5.04 x 3.29 m*
Kitchen/ Dining	17'9" x 10'9"	5.42 x 3.28 m*
Cloaks	5'9" x 2'11"	1.75 x 0.90 m
Laundry	2'10" x 2'10"	0.87 x 0.87 m

FIRST FLOOR

Bedroom 1	13'7" x 10'11"	4.13 x 3.32 m*
EnSuite	7'1" x 4'1"	2.15 x 1.25 m
Bedroom 2	13'11" x 10'10"	4.25 x 3.31 m*
Bedroom 3	8'8" x 8'5"	2.64 x 2.56 m
Bathroom	6'8" x 5'7"	2.02 x 1.71 m

Customers should note this illustration is an example of The Letchworth housetype. All dimensions indicated are approximate and furniture layout is for illustrative purposes only. Homes may be a 'handed' (mirror image) versions of the illustrations, and may be detached, semi-detached or terraced. Materials used may differ from plot to plot including render and roof tile colours. Detailed plans and specifications are available for inspection for each plot at our Marketing Suite during working hours and customers must check their individual specifications prior to making reservation.

KEY dw Dishwasher space ov Oven ff Fridge/freezer wm Washing machine space td Tumble dryer space hw Hot Water Cylinder
*Max dimensions Note: Bedroom dimensions taken into wardrobe recess

Traditional homes, built the way you remember

