



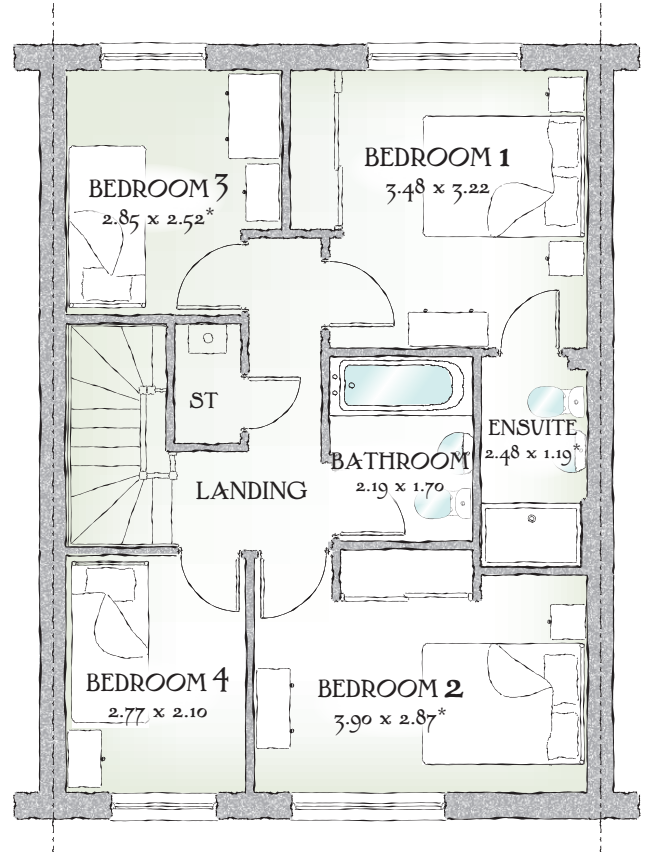
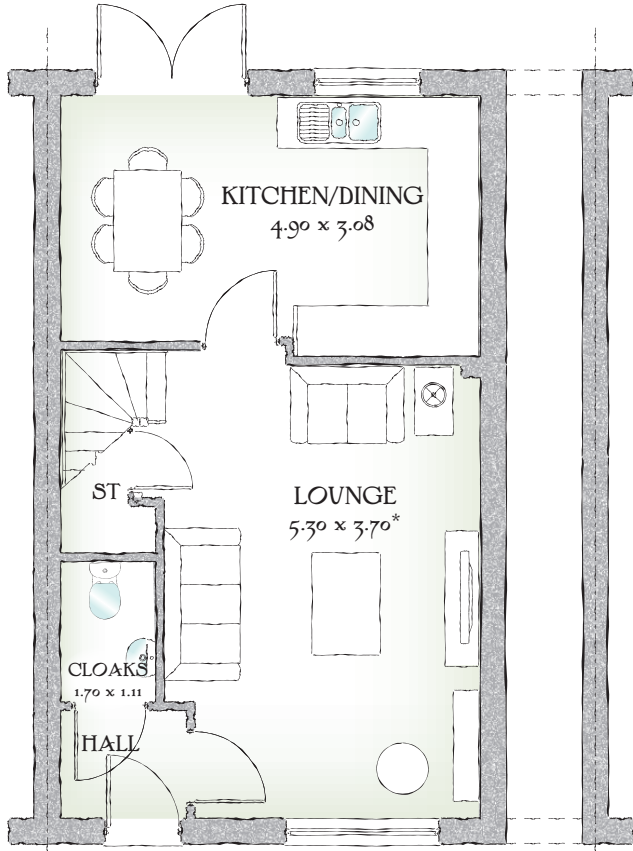
Malvern⁴

FOUR BEDROOM HOME





Malvern⁴



1018 SQ FT | FOUR BEDROOM HOME

Simple, yet stylish, compact yet undeniably chic, these superb homes offer the perfect combination of quality and value, space and savings, all created with the same high levels of craftsmanship that set all Redrow Homes apart.

GROUND FLOOR

Lounge	17'5" x 12'2"	5.30 x 3.70 m*
Kitchen/ Dining	16'1" x 10'1"	4.90 x 3.08 m
Cloaks	5'7" x 3'8"	1.70 x 1.11 m

FIRST FLOOR

Bedroom 1	11'5" x 10'7"	3.48 x 3.22 m*
EnSuite	8'2" x 3'11"	2.48 x 1.19 m*
Bedroom 2	12'10" x 9'5"	3.90 x 2.87 m*
Bedroom 3	9'4" x 8'3"	2.85 x 2.52 m*
Bedroom 4	9'1" x 6'11"	2.77 x 2.10 m
Bathroom	7'2" x 5'7"	2.19 x 1.70 m

Customers should note this illustration is an example of The Malvern housetype. All dimensions indicated are approximate and furniture layout is for illustrative purposes only. Homes may be a 'handed' (mirror image) versions of the illustrations, and may be detached, semi-detached or terraced. Materials used may differ from plot to plot including render and roof tile colours. Detailed plans and specifications are available for inspection for each plot at our Marketing Suite during working hours and customers must check their individual specifications prior to making reservation. All wardrobes are subject to site specification. Please see Sales Consultant for further details.

KEY *Max dimensions Note: Bedroom dimensions taken into wardrobe recess. All wardrobes are subject to site specification. Please see Sales Consultant for further details.

Traditional homes, built the way you remember

