



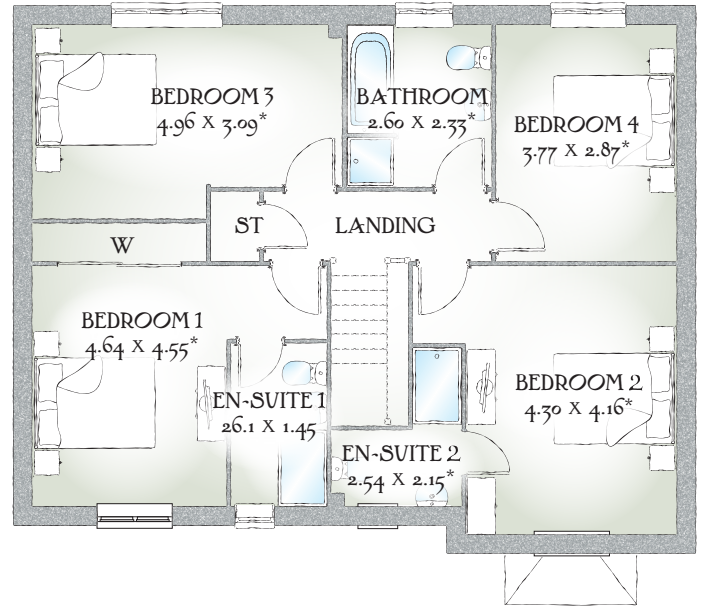
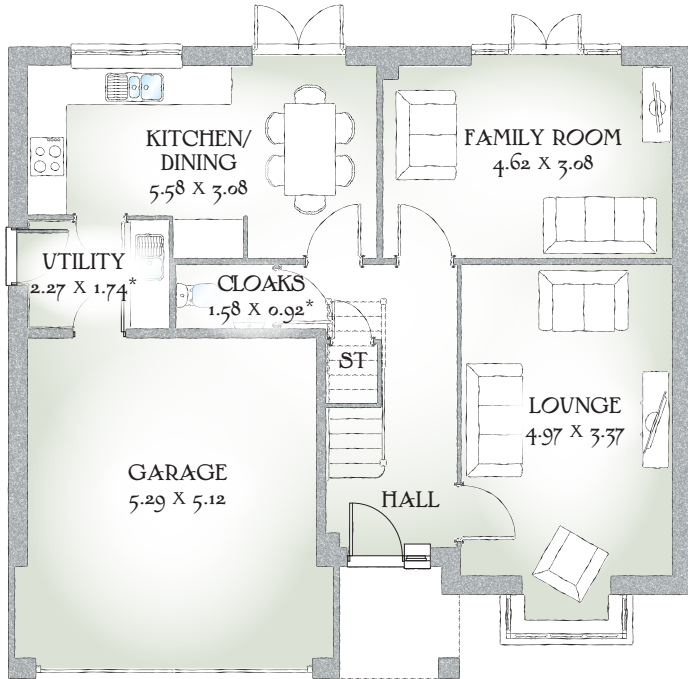
Mapleton

FOUR BEDROOM HOME



 REDROW

Mapleton



FOUR BEDROOM HOME

A beautifully designed four bedroom home with spacious kitchen/dining area, separate utility room and additional family room and lounge, giving ample space for all the family.

GROUND FLOOR

Lounge	16'4" x 11'1"	4.97 x 3.37m
Kitchen/ Dining	18'4" x 10'1"	5.58 x 3.08m*
Family Room	15'2" x 10'1"	4.62 x 3.08m
Garage	17'4" x 16'10"	5.29 x 5.12m*
Utility	7'5" x 5'8"	2.27 x 1.74m*
Cloaks	5'2" x 3'0"	1.58 x 0.92m*

FIRST FLOOR

Bedroom 1	15'3" x 14'11"	4.64 x 4.55m*
En-suite 1	8'7" x 4'9"	26.1 x 1.45m
Bedroom 2	14'1" x 13'8"	4.30 x 4.16m*
En-suite 2	8'4" x 7'1"	2.54 x 2.15m*
Bedroom 3	16'3" x 10'2"	4.96 x 3.09m*
Bedroom 4	12'4" x 9'5"	3.77 x 2.87m*
Bathroom	8'6" x 7'8"	2.60 x 2.33m*

Customers should note this illustration is an example of The Mapleton house type. All dimensions indicated are approximate and the furniture layout is for illustrative purposes only. Homes may be 'handed' (mirror image) versions of the illustrations, and may be detached, semi-detached or terraced. Materials used may differ from plot to plot including render and roof tile colours. Detailed plans and specifications are available for inspection for each plot at our Sales Centre during working hours and customers must check their individual specifications prior to making a reservation.

KEY Hob ST Cupboard W Wardrobe

*Max dimensions Note: Bedroom dimensions taken into wardrobe recess. All wardrobes are subject to site specification. Please see Sales Consultant for further details.

Traditional homes, built the way you remember

 **REDROW**
A BETTER WAY TO LIVE